

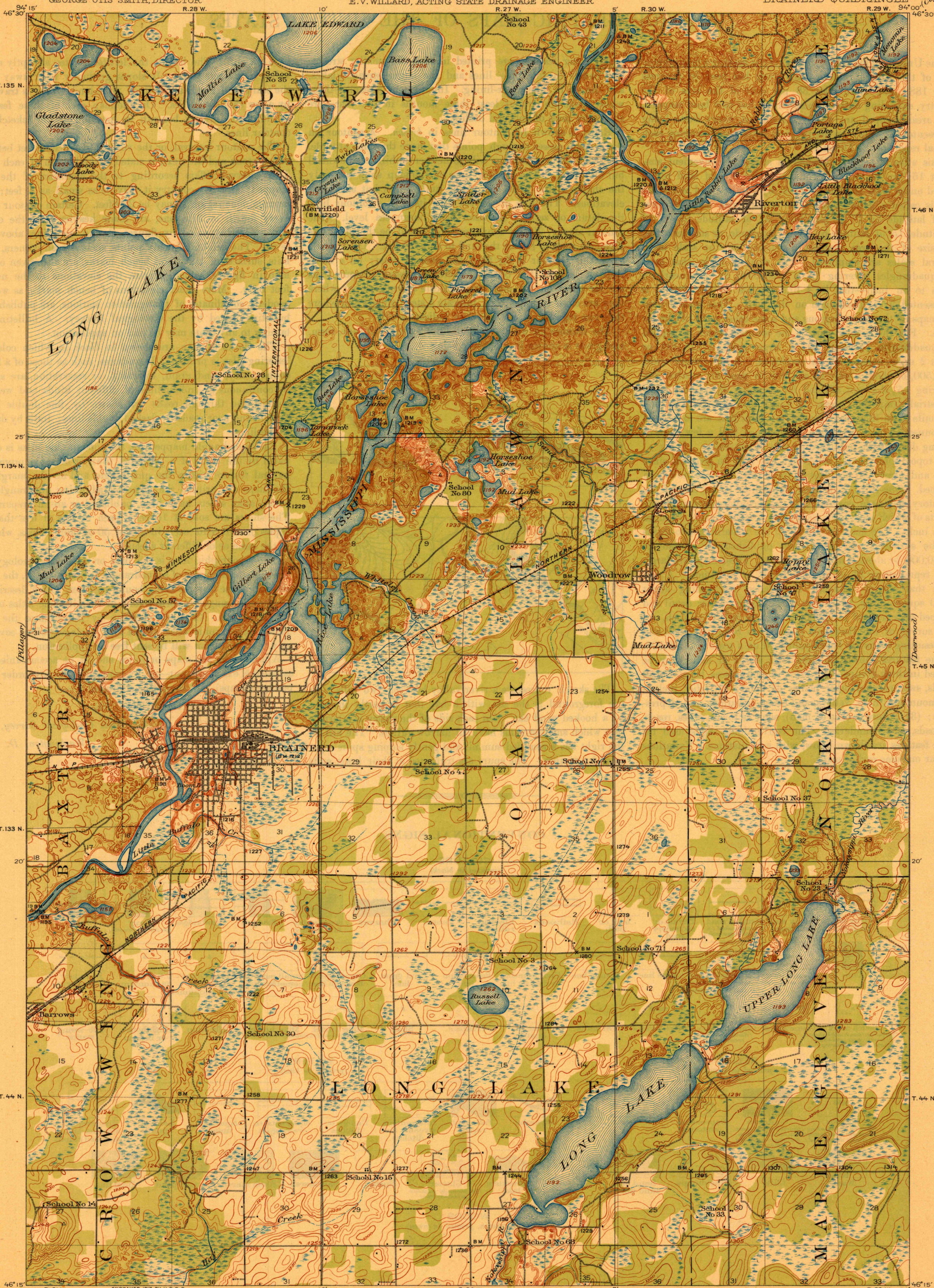
TOPOGRAPHY

STATE OF MINNESOTA

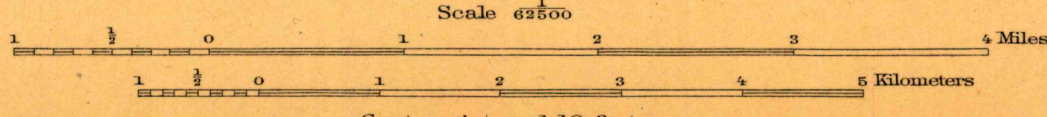
DEPARTMENT OF THE INTERIOR
FRANKLIN K. LANE, SECRETARY
U.S. GEOLOGICAL SURVEY
GEORGE OTIS SMITH, DIRECTOR

W. S. HAMMOND, GOVERNOR
J. A. O. FREUS, STATE AUDITOR
JULIUS A. SCHMAHL, SEC. OF STATE
E. V. WILLARD, ACTING STATE DRAINAGE ENGINEER

MINNESOTA
(CROW WING COUNTY)
BRainerd QUADRANGLE



R. B. Marshall, Chief Geographer.
W. H. Herron, Geographer in charge.
Topography by F. B. Barnett and J. H. Wilson.
Control by U. S. Coast and Geodetic Survey,
Mississippi River Commission, E. L. McNair, and J. M. Ray.
Surveyed in 1914-1915.



Contour interval 10 feet.
Datum is mean sea level.

Edition of 1918.

BRainerd

RETURN TO:
NHD HISTORICAL MAP ARCHIVES
USGS NATIONAL CENTER, MS-522
RESTON, VA 22092