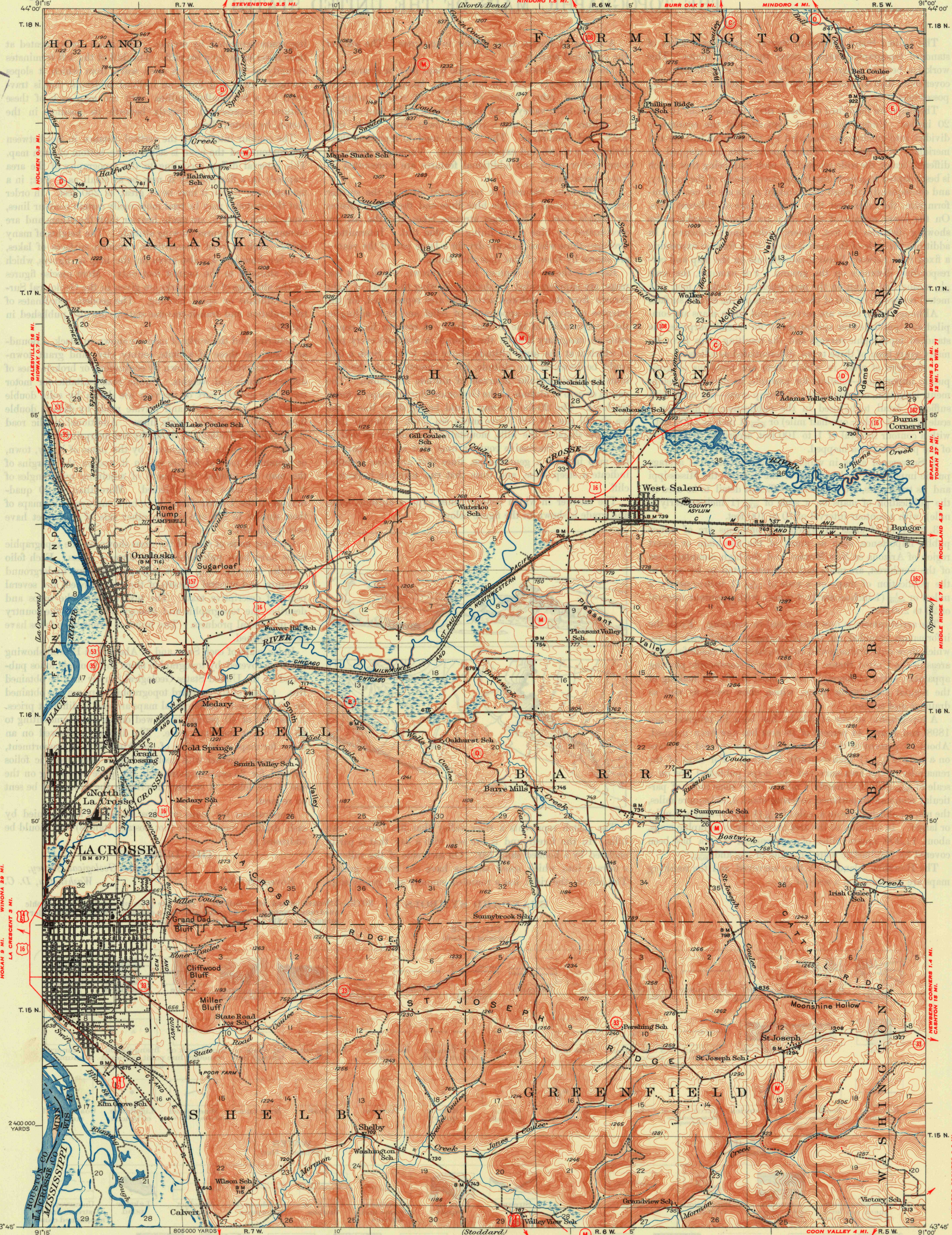


UNITED STATES  
DEPARTMENT OF THE INTERIOR  
GEOLOGICAL SURVEY

STATE OF WISCONSIN  
GEOLOGICAL AND NATURAL HISTORY SURVEY

WISCONSIN-MINNESOTA  
LA CROSSE QUADRANGLE



Topography by J.G. Staack, J.C. Hilliard, and H.P. Jones  
Culture and drainage in part compiled from aerial photographs  
taken by Air Corps U.S. Army  
Control by U.S. Geological Survey  
Surveyed in 1921-1927

**ROAD CLASSIFICATION**  
HARD-SURFACE ALL WEATHER ROADS DRY WEATHER ROADS  
Heavy-duty ——— **LANE 1** Improved dirt ———  
Medium-duty ——— **LANE 2** Unimproved dirt ———  
Loose-surface, graded, or narrow hard-surface ———  
U. S. Route      State Route

APPROXIMATE MEAN  
DECLINATION, 1927

TRUE NORTH  
MAGNETIC NORTH

Scale 1:25,000  
Contour interval 20 feet  
Datum is mean sea level

U.S.G.S.  
**FILE COPY**  
Inspection and Editing

LA CROSSE, WIS-MINN.  
Edition of 1930  
reprinted 1950  
N4345-W190Q/15

USGS  
Historical File  
Topographic Division

FEB 27 1950 2130