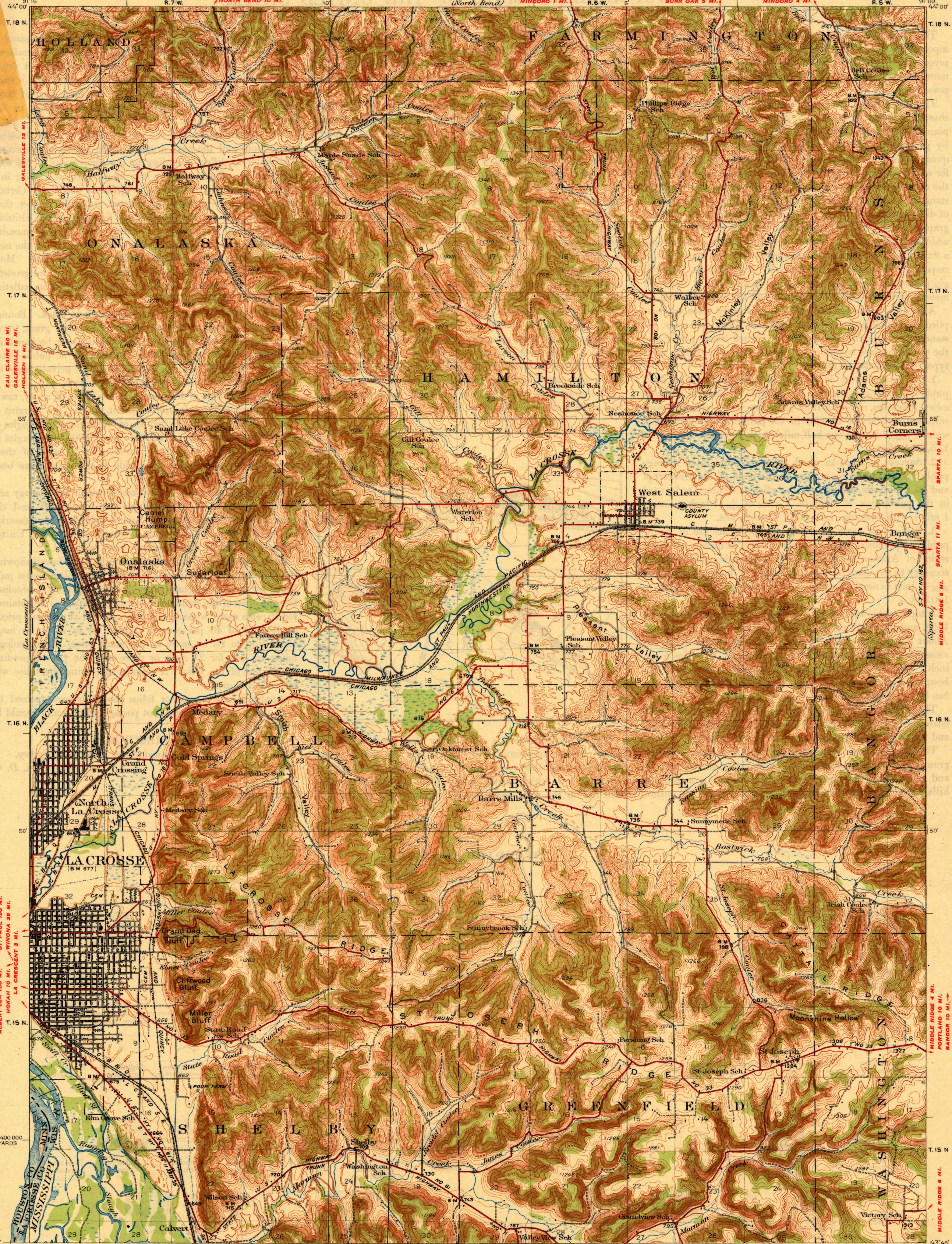


DEPARTMENT OF THE INTERIOR
U.S. GEOLOGICAL SURVEY

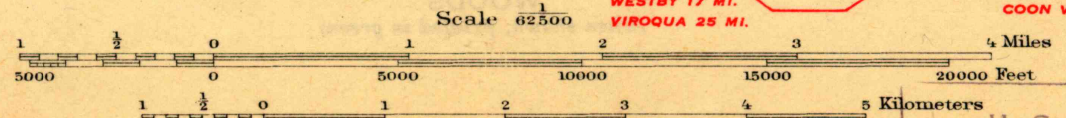
STATE OF WISCONSIN
GEOLOGICAL AND NATURAL HISTORY SURVEY
E.F. BEAN, DIRECTOR AND STATE GEOLOGIST

WISCONSIN-MINNESOTA
LA CROSSE QUADRANGLE

U.S. G. S.
FILE COPY



Topography by J.G. Staack, J.C. Hilliard, and H.P. Jones
Culture and drainage in part compiled from aerial photographs
taken by Air Corps, U.S. Army
Control by U.S. Geological Survey
Surveyed in 1921-1922



Contour interval 20 feet
Datum is mean sea level

U.S. G. S.
FILE COPY
Inspection and Editing

USGS LA CROSSE, WIS.-MINN.
Edition of 1930
2626:1750/99; NOV 19 1930 (2950)
2950