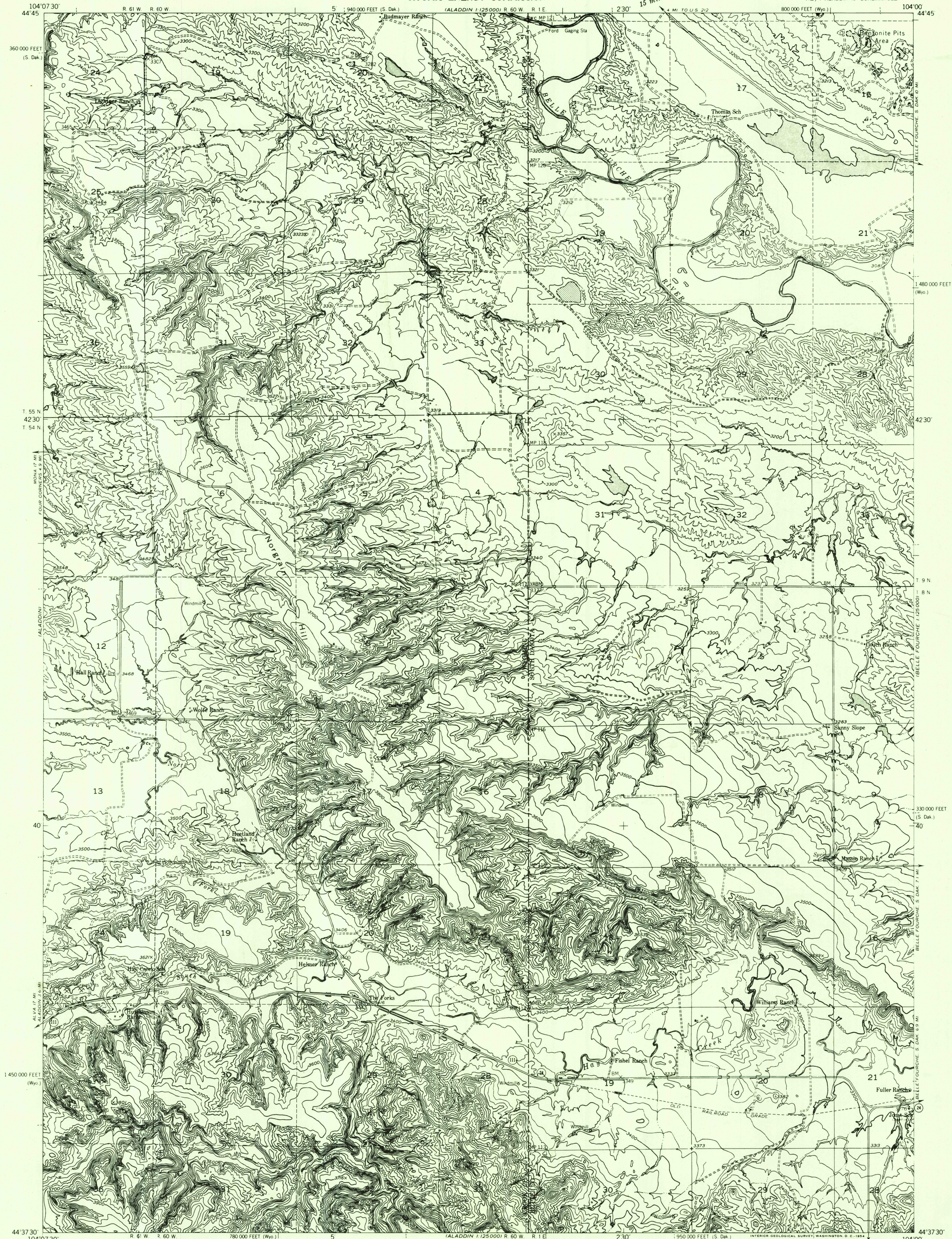


Preliminary edition
Pending completion of 1:62 500 scale
15 minute maps covering this area

BELLE FOURCHE
1:25000

U.S.G.S.
FILE COPY
TOPOGRAPHIC DIVISION



Mapped, edited, and published by the Geological Survey

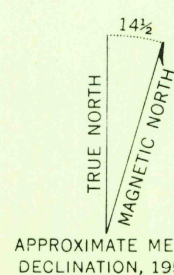
Control by USGS and USC&GS

Topography from aerial photographs by photogrammetric methods 1954

Aerial photographs taken 1953

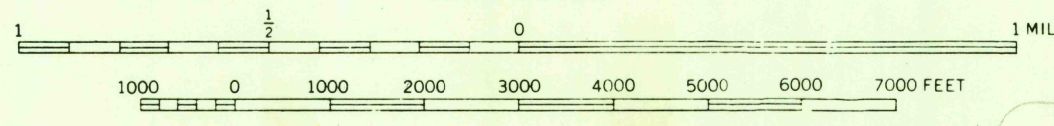
Polyconic projection. 1927 North American datum
10,000-foot grid based on Wyoming coordinate system,
east zone and South Dakota coordinate system,
north zone

Dashed land lines indicate approximate locations

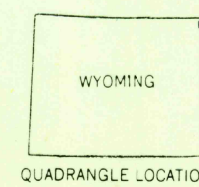


APPROXIMATE MEAN
DECLINATION, 1954

SCALE 1:24000



CONTOUR INTERVAL 20 FEET
DATUM IS MEAN SEA LEVEL



QUADRANGLE LOCATION

ROAD CLASSIFICATION

Heavy-duty	4 LANE 16 LANE	Light-duty
Medium-duty	4 LANE 16 LANE	Unimproved dirt
	U.S. Route	State Route

THE FORKS, WYO.-S. DAK.
NE 1/4 ALADDIN 15' QUADRANGLE
N4437.5-W10400/7.5

1954

RETURN TO:
USGS AND HISTORICAL MAP ARCHIVES

U.S.G.S.
FILE COPY
TOPOGRAPHIC DIVISION

JAN 10 1955