

U.S.G.S.  
FILE COPY

TOPOGRAPHIC SHEET

WYOMING - SOUTH DAKOTA  
SUNDANCE QUADRANGLE

U.S. GEOLOGICAL SURVEY  
CHARLES D. WALCOTT, DIRECTOR  
104°30' R. 64 W. R. 63 W.

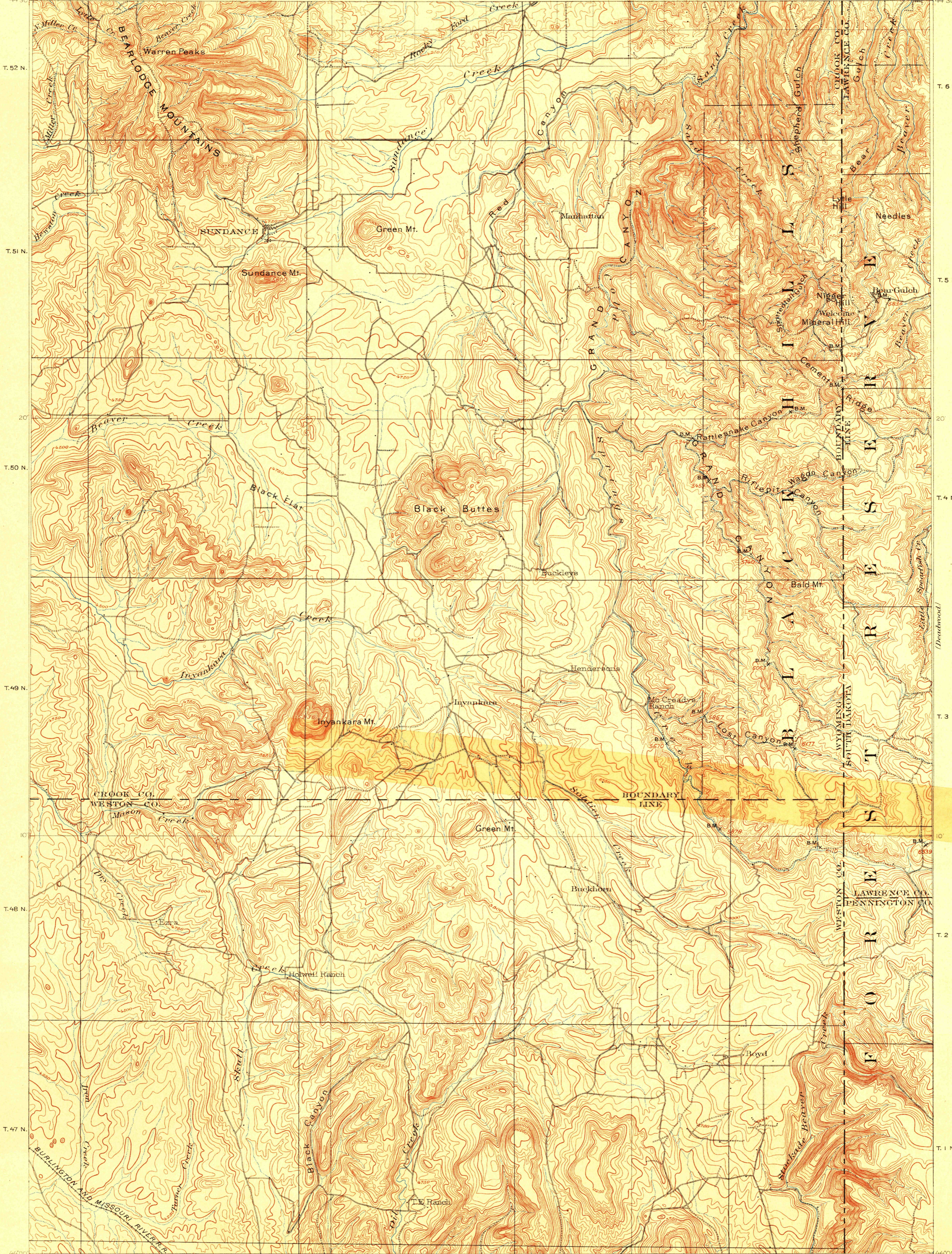
R. 62 W.

R. 61 W. 10'

R. 60 W.

R. 1 E.

104°00' 44'30"



RETURN TO:  
USGS AND HISTORICAL MAP ARCHIVES

U.S.G.S.  
FILE COPY  
Ed. Div. Topographic Maps.

Henry Gannett, Chief Topographer.  
Jno. H. Renshaw, Topographer in charge.  
Control by W. S. Post.  
Topography by H. S. Wallace, and W. H. Herron.  
Surveyed in 1894 and 1899.

Wallace  
1894  
Herron  
1899

TRUE NORTH  
MAGNETIC NORTH  
APPROXIMATE MEAN  
DECLINATION 1909

Scale 1:25000  
1 2 3 4 5 Miles  
1 2 3 4 5 Kilometers  
Contour interval 50 feet.  
Datum is mean sea level.

DIAGRAM OF TOWNSHIP

6	5	4	3	2	1
7	8	9	10	11	12
13	14	15	16	17	18
19	20	21	22	23	24
25	26	27	28	29	30
31	32	33	34	35	36

U.S. Geological Survey,  
MAY 31 1902 2615  
Ed. Div. Topographic Maps.

Sundance, Wyo. / So. Dak.