

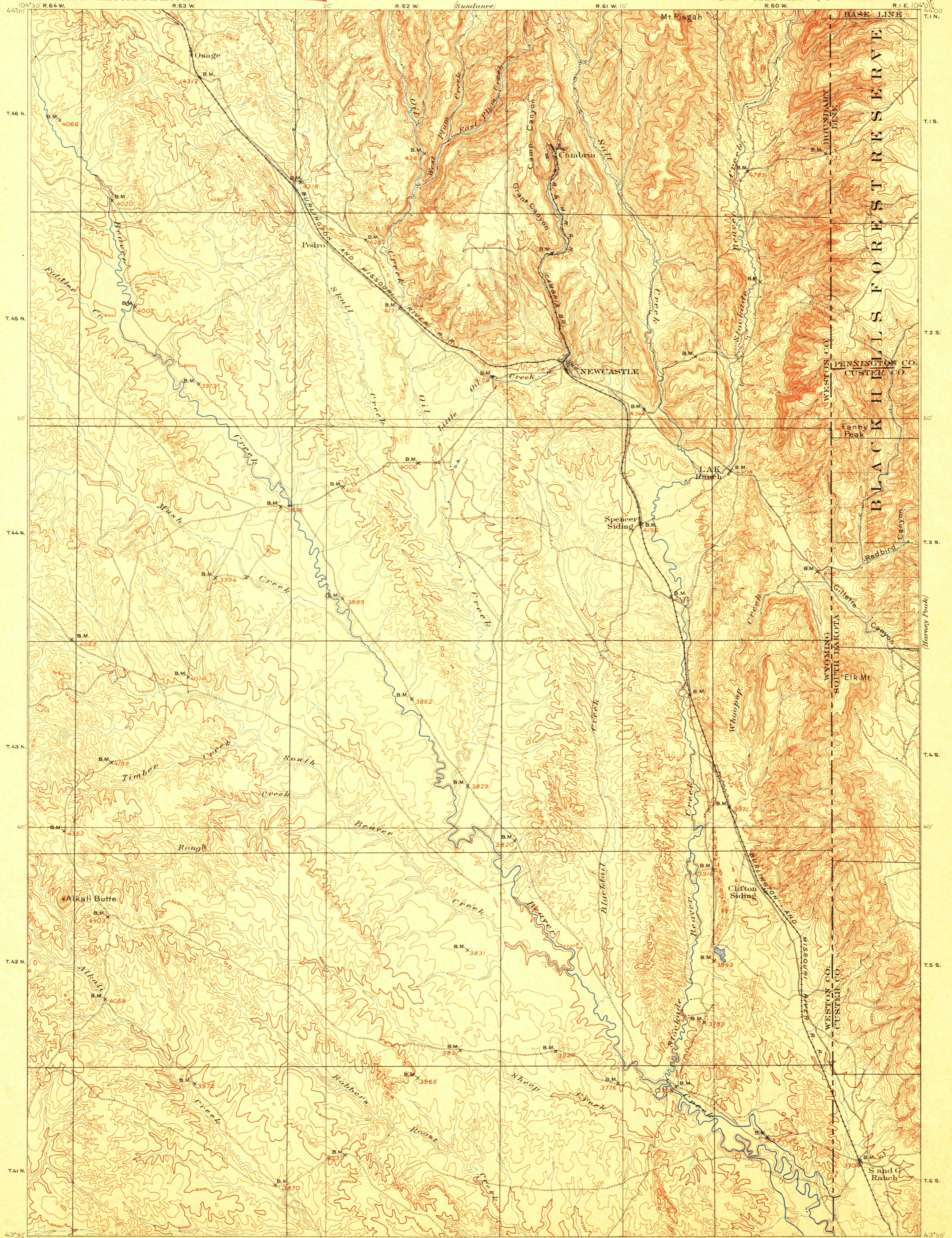
U. S. G. S.  
**FILE COPY**

U.S. GEOLOGICAL SURVEY  
CHARLES D. WALCOTT DIRECTOR

Ed. Div. Topographic Maps.

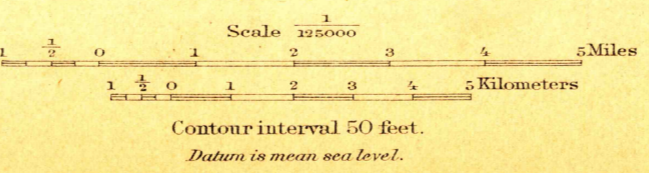
# TOPOGRAPHIC SHEET

WYOMING-SOUTH DAKOTA  
NEWCASTLE QUADRANGLE



43°30' 10" R. 64 W. ENGRAVED APR. 1901  
E.M. Douglas Geographer in charge.  
Triangulation by Frank Tweedy and R.H. Chapman.  
Topography by W.H. Herron.  
Surveyed in 1899.

U. S. G. S.  
**FILE COPY**  
Ed. Div. Topographic Maps.



U.S. Geological Survey,  
JUN 17 1901 2522  
Ed. Div. Topographic Maps.

NEWCASTLE

RETURN TO:  
USGS AND HISTORICAL MAP ARCHIVES