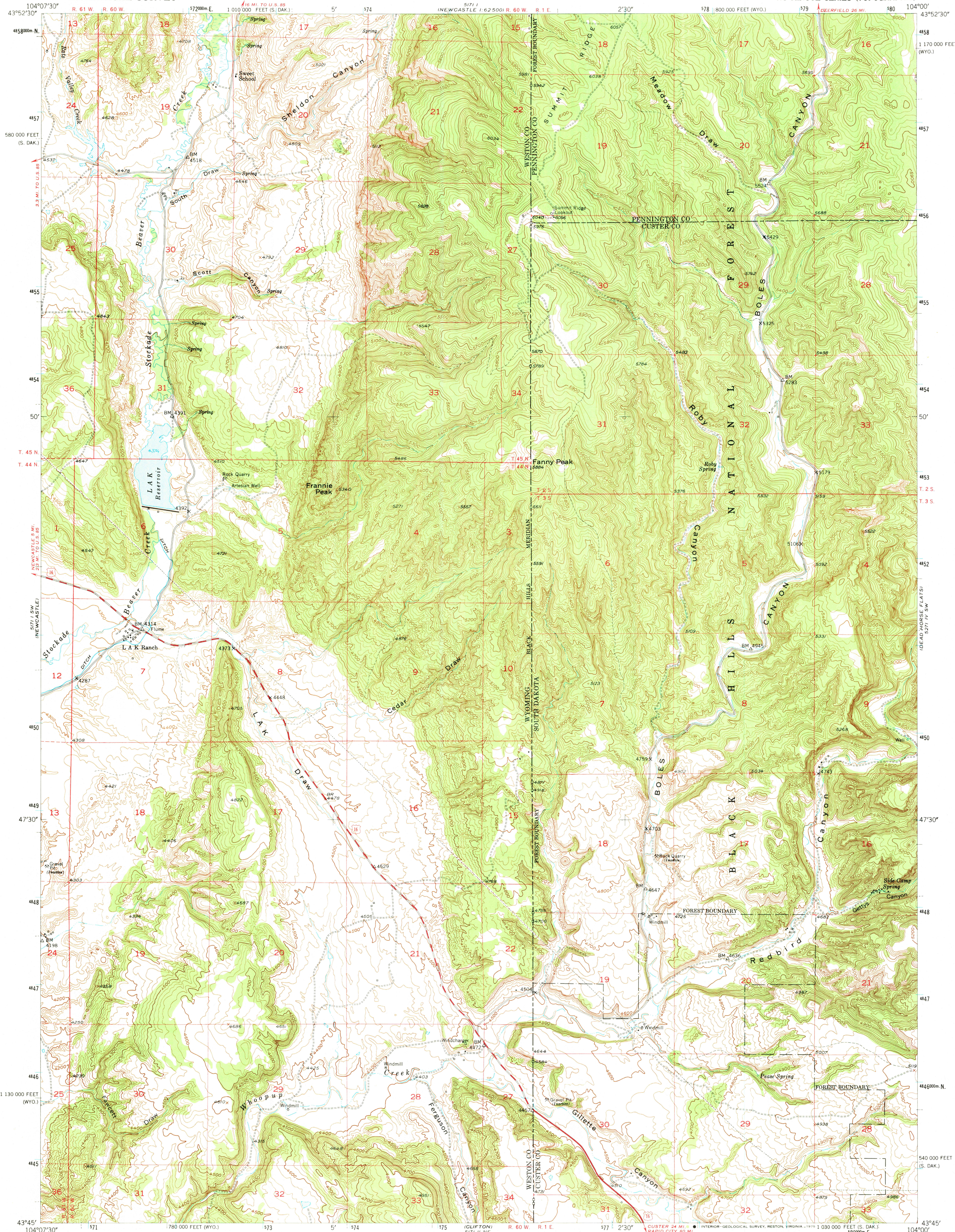


UNITED STATES  
DEPARTMENT OF THE INTERIOR  
GEOLOGICAL SURVEY

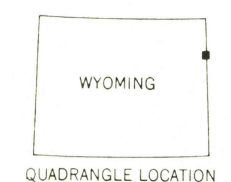
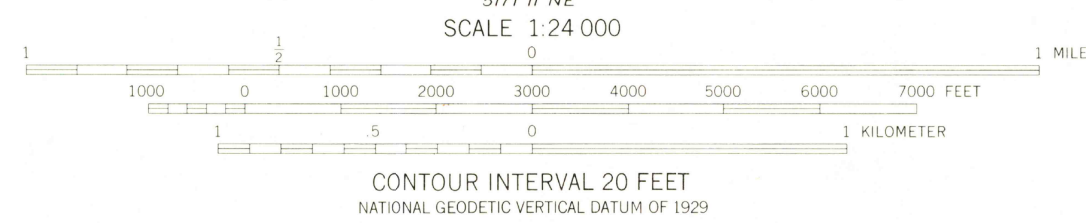
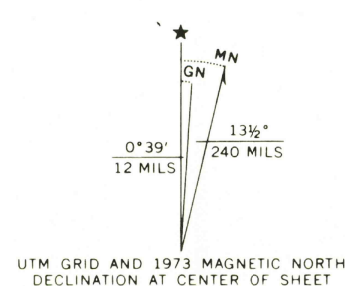
FANNY PEAK QUADRANGLE  
WYOMING-SOUTH DAKOTA  
7.5 MINUTE SERIES (TOPOGRAPHIC)



Mapped, edited, and published by the Geological Survey as part of the Department of the Interior program for the development of the Missouri River Basin Control by USGS and USC&GS

Topography from aerial photographs by multiplex methods by Tennessee Valley Authority. Aerial photographs taken 1948. Field check 1951.

Polyconic projection, 1927 North American datum 10,000-foot grids based on Wyoming coordinate system, east zone and South Dakota coordinate system, south zone. 1000-meter Universal Transverse Mercator grid ticks, zone 13, shown in blue. Dashed land lines indicate approximate locations.



ROAD CLASSIFICATION

Heavy-duty	4 LANE 6 LANE	Light-duty
Medium-duty	4 LANE 6 LANE	Unimproved dirt

   U.S. Route       State Route

THIS MAP COMPLIES WITH NATIONAL MAP ACCURACY STANDARDS FOR SALE BY U. S. GEOLOGICAL SURVEY, DENVER, COLORADO 80225, OR RESTON, VIRGINIA 22092 A FOLDER DESCRIBING TOPOGRAPHIC MAPS AND SYMBOLS IS AVAILABLE ON REQUEST

HISTORICAL FILE  
TOPOGRAPHIC DIVISION

FANNY PEAK, WYO.-S. DAK.  
N4345-W10400/7.5

1951  
MINOR REVISIONS 1973  
AMS 5171 I SE - SERIES V874

RETURN TO:  
USGS AND HISTORICAL MAP ARCHIVES

JUN 02 1975