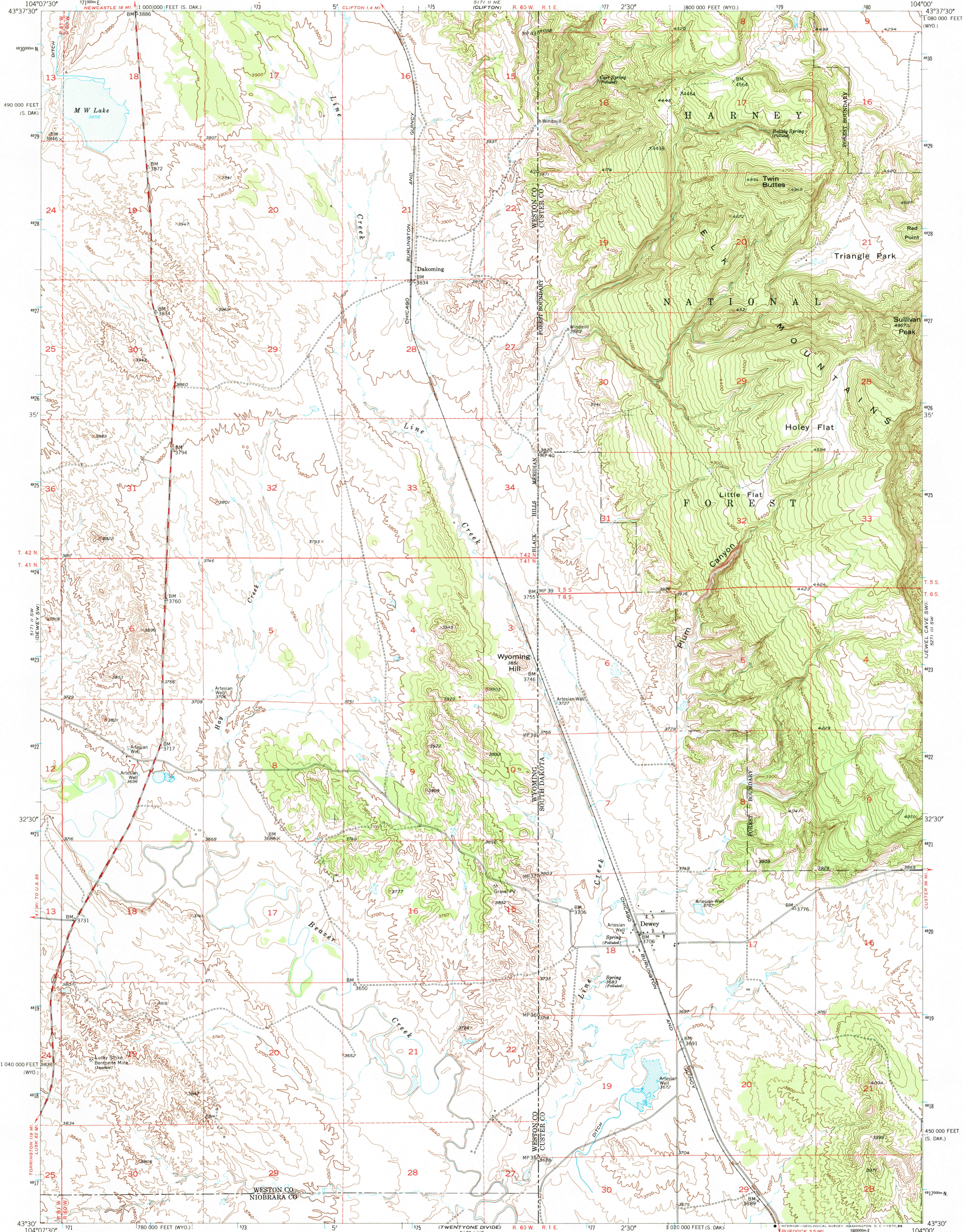
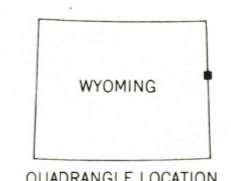
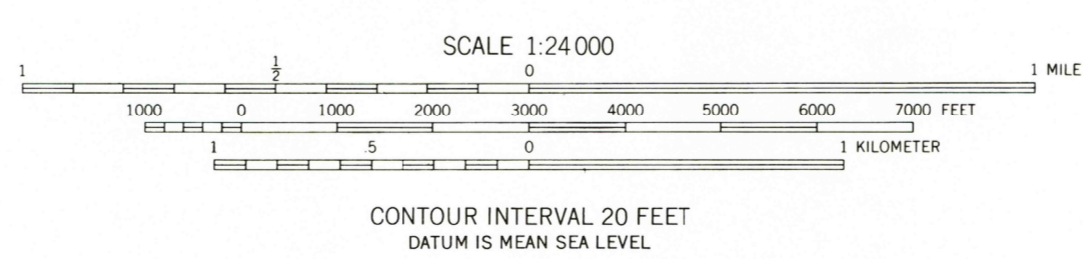
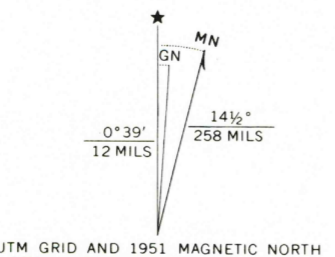


UNITED STATES  
DEPARTMENT OF THE INTERIOR  
GEOLOGICAL SURVEY

DEWEY QUADRANGLE  
WYOMING-SOUTH DAKOTA  
7.5 MINUTE SERIES (TOPOGRAPHIC)



Mapped, edited, and published by the Geological Survey as part of the Department of the Interior program for the development of the Missouri River Basin Control by USGS and USC&GS  
Topography from aerial photographs by multiplex methods by Tennessee Valley Authority. Aerial photographs taken 1948 Field check 1951  
Polyconic projection. 1927 North American datum 10,000-foot grid based on Wyoming coordinate system, east zone and South Dakota coordinate system, south zone  
Dashed land lines indicate approximate locations  
1000 meter Universal Transverse Mercator grid ticks, zone 13, shown in blue



ROAD CLASSIFICATION

Heavy-duty	4 LANE 16 LANE	Light-duty
Medium-duty	4 LANE 16 LANE	Unimproved dirt
U. S. Route	State Route	

THIS MAP COMPLIES WITH NATIONAL MAP ACCURACY STANDARDS  
FOR SALE BY U.S. GEOLOGICAL SURVEY, DENVER, COLORADO 80225, OR WASHINGTON, D. C. 20242  
A FOLDER DESCRIBING TOPOGRAPHIC MAPS AND SYMBOLS IS AVAILABLE ON REQUEST

DEWEY, WYO.-S. DAK.  
N4330-W10400/7.5  
1951  
AMS 5171 II SE-SERIES V874