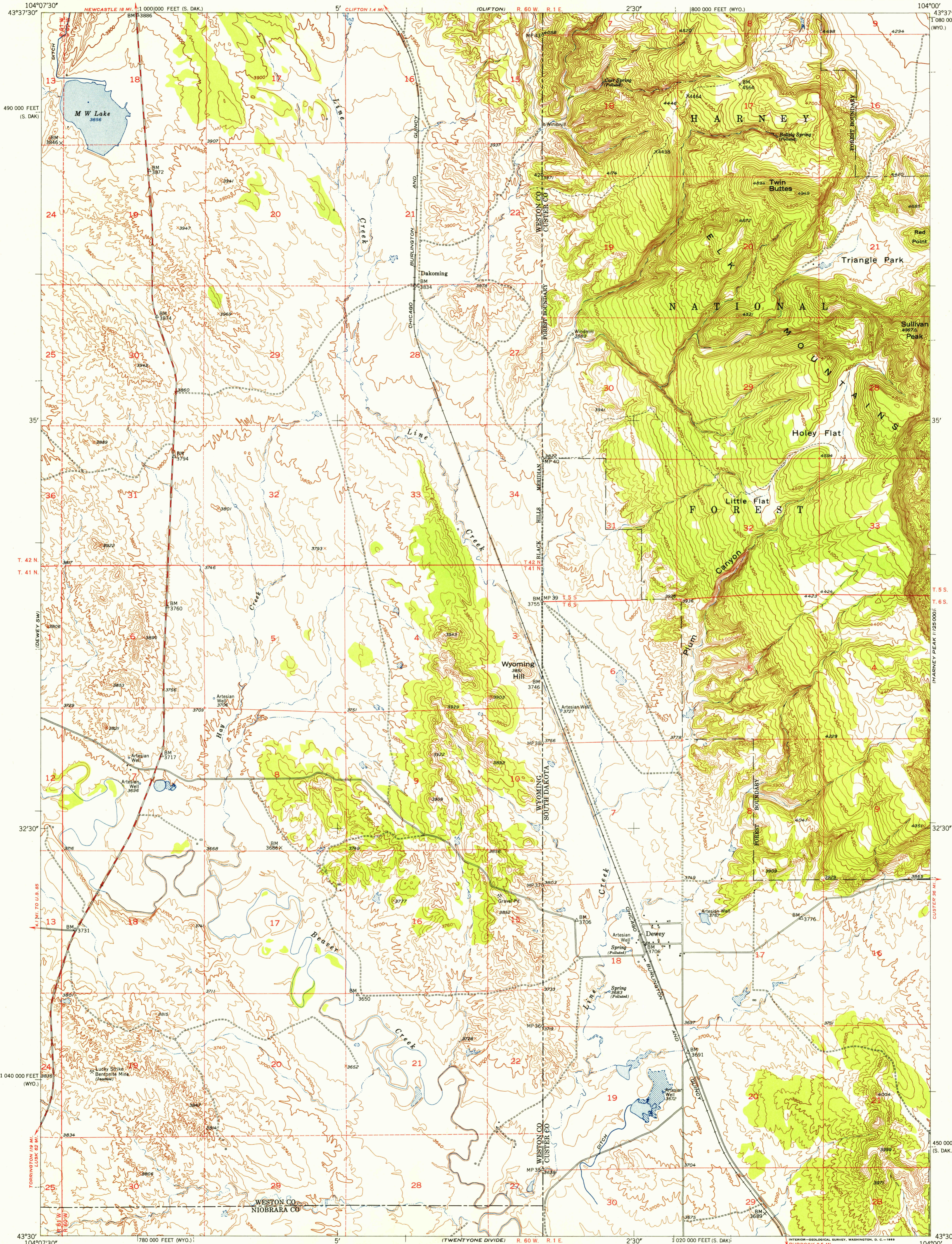


UNITED STATES
DEPARTMENT OF THE INTERIOR
GEOLOGICAL SURVEY

DEWEY QUADRANGLE
WYOMING-SOUTH DAKOTA
7.5 MINUTE SERIES (TOPOGRAPHIC)

MARNEY PEAK 11,295.000'

U.S.G.S.
FILE COPY



MARNEY PEAK 11,295.000'

CUSTER 36 MI.

CUSTER 36 MI.

CUSTER 36 MI.

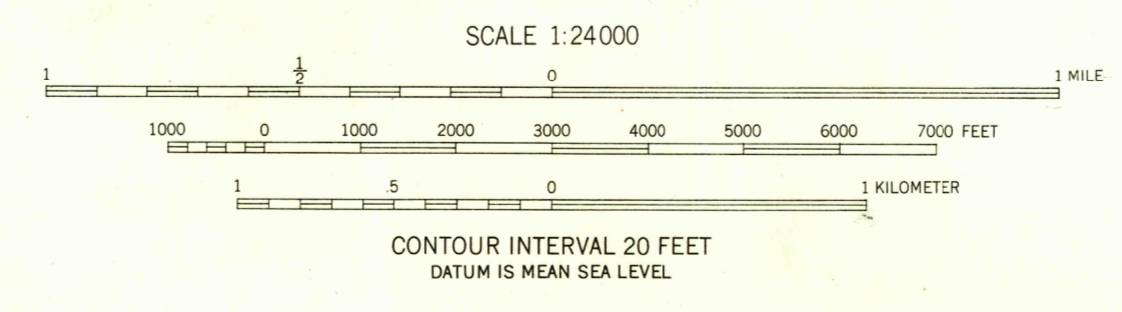
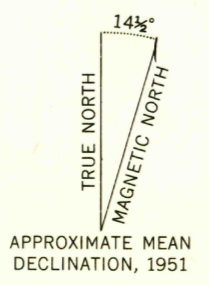
BURDOCK 3.5 MI.

BURDOCK

Mapped, edited, and published by the Geological Survey as part of the Department of the Interior program for the development of the Missouri River Basin Control by USGS and USC&GS

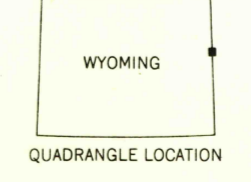
Topography from aerial photographs by multiplex methods by Tennessee Valley Authority. Aerial photographs taken 1948. Field check 1951.

Polyconic projection. 1927 North American datum. 10,000-foot grid based on Wyoming coordinate system, east zone and South Dakota coordinate system, south zone. Dashed land lines indicate approximate locations.



ROAD CLASSIFICATION

Heavy-duty	4 LANE 16 LANE	Light-duty
Medium-duty	4 LANE 16 LANE	Unimproved dirt
	U. S. Route	Slate Route



DEWEY, WYO.-S. DAK.
N4330-W10400/7.5

1951

RETURN TO:
USGS AND HISTORICAL MAP ARCHIVES

U.S.G.S.
FILE COPY

THIS MAP COMPLIES WITH NATIONAL MAP ACCURACY STANDARDS
FOR SALE BY U. S. GEOLOGICAL SURVEY, FEDERAL CENTER, DENVER, COLORADO OR WASHINGTON 25, D. C.
A FOLDER DESCRIBING TOPOGRAPHIC MAPS AND SYMBOLS IS AVAILABLE ON REQUEST

JUL 5 1953