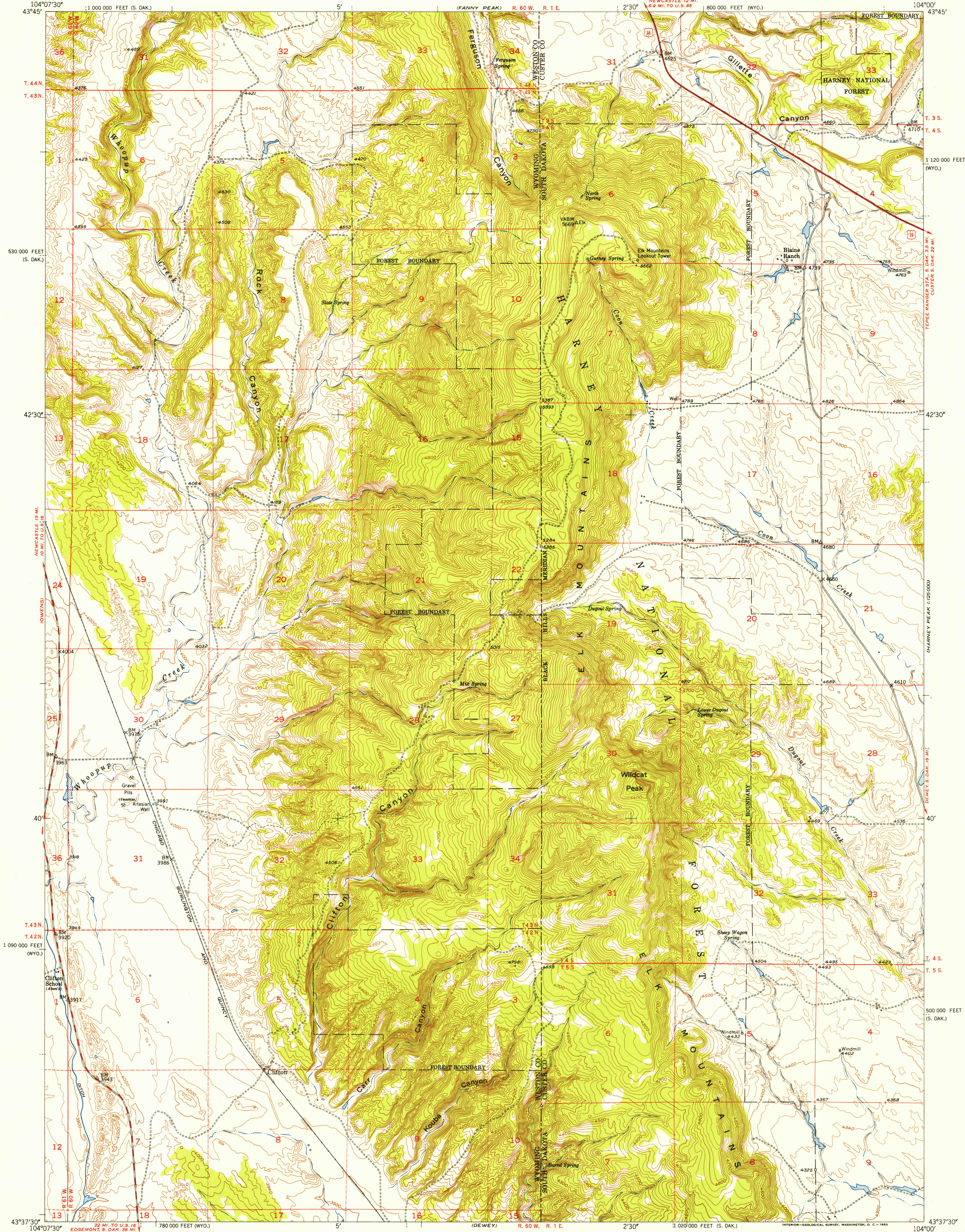


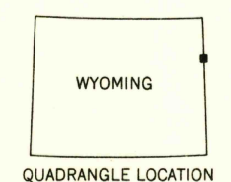
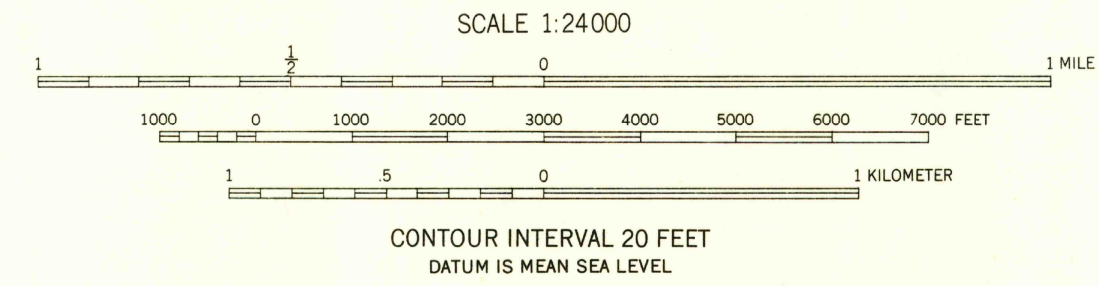
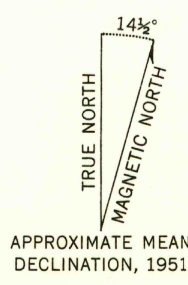
UNITED STATES  
DEPARTMENT OF THE INTERIOR  
GEOLOGICAL SURVEY

FILE COPY  
Inspection and Editing

CLIFTON QUADRANGLE  
WYOMING-SOUTH DAKOTA  
7.5 MINUTE SERIES (TOPOGRAPHIC)



Mapped, edited, and published by the Geological Survey as part of the Department of the Interior program for the development of the Missouri River Basin Control by USGS and USC&GS  
Topography from aerial photographs by multicolor methods by Tennessee Valley Authority Aerial photographs taken 1948  
Field check 1951  
Polyconic projection. 1927 North American datum  
10,000-foot grid based on Wyoming coordinate system, east zone and South Dakota coordinate system, south zone  
Dashed land lines indicate approximate locations



ROAD CLASSIFICATION	
Heavy-duty	2 LANE 16 LANE Light-duty
Medium-duty	2 LANE 16 LANE Unimproved dirt
U. S. Route	Slate Route

CLIFTON, WYO.-S. DAK.  
N4337.5-W10400/7.5

U.S.G.S.  
FILE COPY  
Inspection and Editing

THIS MAP COMPLIES WITH NATIONAL MAP ACCURACY STANDARDS  
FOR SALE BY U. S. GEOLOGICAL SURVEY, FEDERAL CENTER, DENVER, COLORADO OR WASHINGTON 25, D. C.  
A FOLDER DESCRIBING TOPOGRAPHIC MAPS AND SYMBOLS IS AVAILABLE ON REQUEST

1951

APR 27 1953