

YANKTON, SOUTH DAKOTA-NEBRASKA

30 X 60 MINUTE SERIES (PLANIMETRIC)

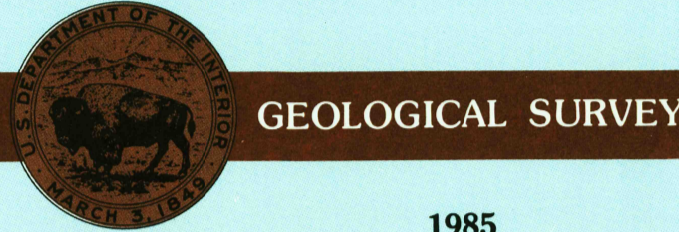
Yankton SOUTH DAKOTA-NEBRASKA

1:100 000-scale planimetric map



30 X 60 MINUTE QUADRANGLE SHOWING

- Elevations in meters
- Highways, roads and other manmade structures
- Water features
- Woodland areas
- Geographic names



Produced by the United States Geological Survey
 Compiled from USGS 1:24 000-scale topographic maps dated 1957-1978. Planimetry revised from aerial photographs taken 1984 and other source data. Revised information not field checked. Map edited 1985.
 Projection and 10 000-meter grid, zone 14, Universal Transverse Mercator
 25 000-foot grid ticks based on Nebraska coordinate system, north zone and South Dakota coordinate system, south zone 1927 North American Datum
 To place on the predicted North American Datum 1983, move the projection lines 6 meters north and 28 meters east
 There may be private inholdings within the boundaries of the National or State reservations shown on this map

NATIONAL GEODETIC VERTICAL DATUM OF 1929 ELEVATIONS SHOWN TO THE NEAREST METER

THIS MAP COMPLIES WITH NATIONAL MAP ACCURACY STANDARDS

Meters	Feet
1	3.2808
2	6.5617
3	9.8425
4	13.1234
5	16.4043
6	19.6852
7	22.9660
8	26.2469
9	29.5278
10	32.8084

To convert meters to feet multiply by 3.2808
 To convert feet to meters multiply by 0.3048

UTM grid convergence (GM) and 1983 magnetic declination (MD) at center of map
 Diagram is approximate

ADJOINING MAPS	1	2	3
1 Lake Andes	4	5	
2 Freeman	6	7	8
3 Rock Rapids			
4 Adkins			
5 Sioux City North			
6 O'Neill			
7 Norfolk			
8 Sioux City South			

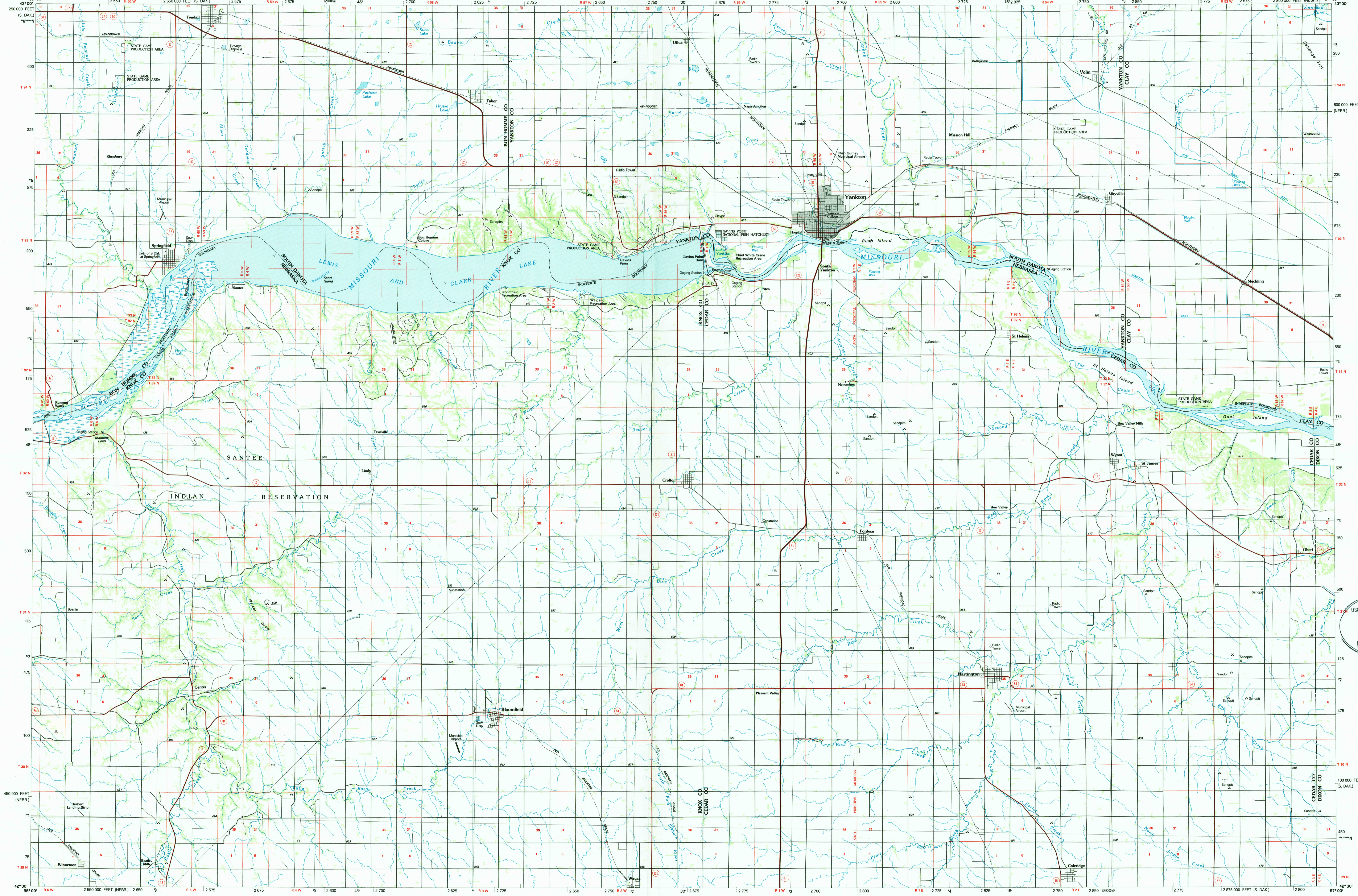
FOR SALE BY U.S. GEOLOGICAL SURVEY
 USGS MIND HISTORIC CENTER, CORADO 80225, OR RESTON, VIRGINIA 22092

JAN 27 1986
 REC'D FILE COPY

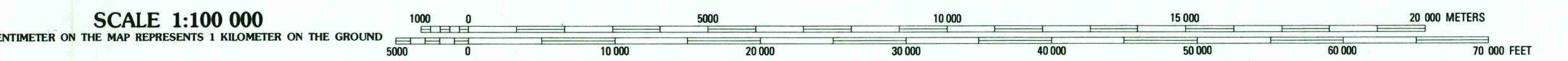
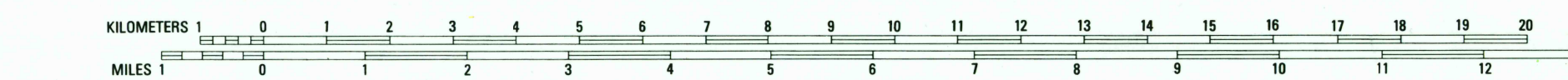
Topographic Map Symbols

- Primary highway, hard surface
- Secondary highway, hard surface
- Light duty road, principal street, hard or improved surface
- Other road or street; trail
- Route marker: Interstate, U.S. State
- Railroad: standard gauge; narrow gauge
- Bridge: overpass; underpass
- Tunnel: road; railroad
- Built up area: locality; elevation
- Airport: landing field; landing strip
- National boundary
- State boundary
- County boundary
- National or State reservation boundary
- Land grant boundary
- U.S. public lands survey: range, township; section
- Range, township; section line: protracted
- Power transmission line; pipeline
- Dam; dam with lock
- Cemetery; building
- Well: water well; spring
- Mine shaft; adit or cave; mine, quarry; gravel pit
- Campground; picnic area; U.S. location monument
- Ruins; cliff dwelling
- Distorted surface: strip mine, lava, sand
- Contours: index; intermediate; supplementary
- Bathymetric contours; index; intermediate
- Stream, lake: perennial; intermittent
- Rapids, large and small; falls, large and small
- Area to be submerged; marsh, swamp
- Land subject to controlled inundation; woodland
- Sink; mangrove
- Ditch; viewpoint

A pamphlet describing topographic maps is available on request



INTERNATIONAL GEOLOGICAL SURVEY, RESTON, VIRGINIA-11888



YANKTON, SOUTH DAKOTA-NEBRASKA
 42097-E1-PL-100
 1985