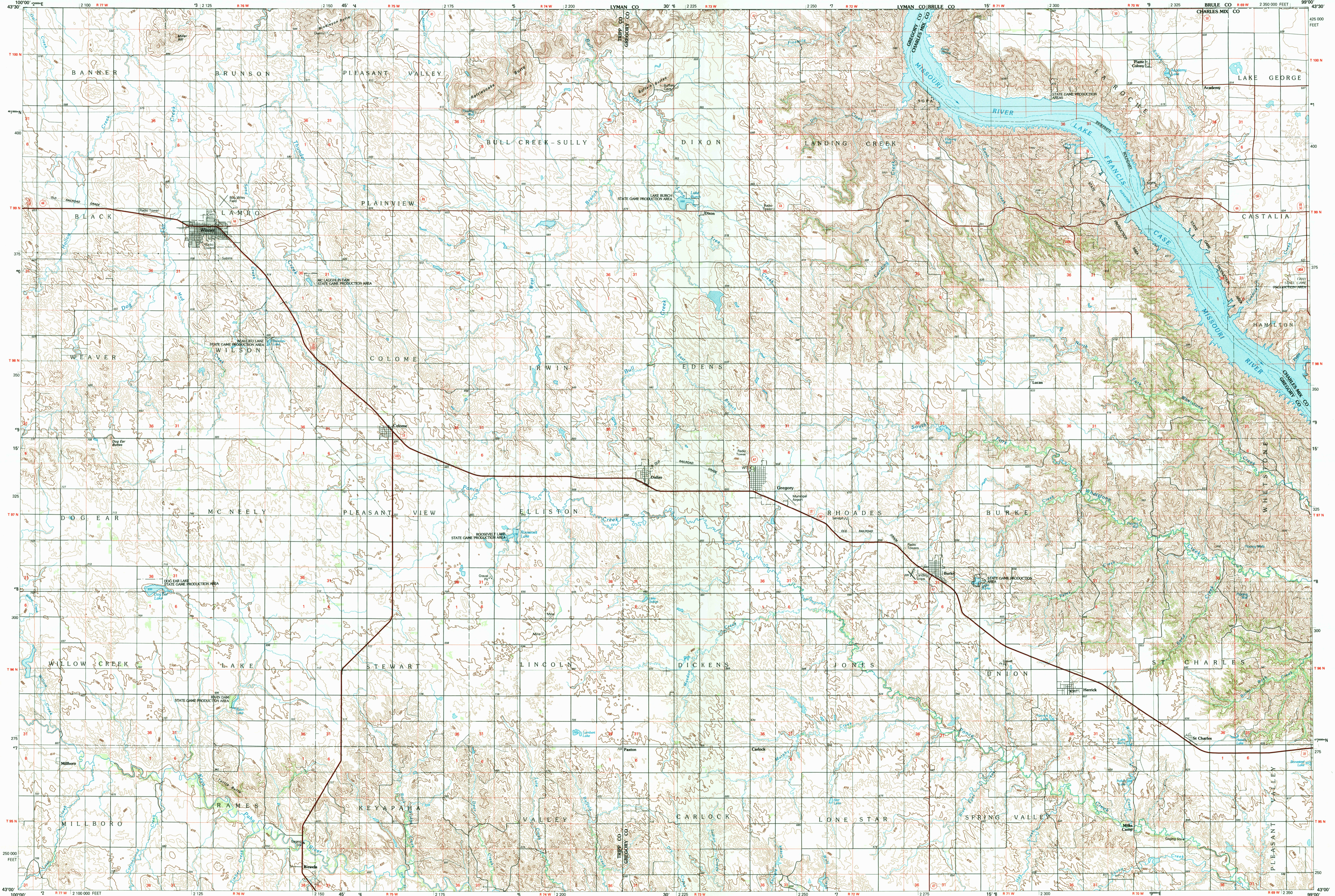


WINNER, SOUTH DAKOTA

30 X 60 MINUTE SERIES (TOPOGRAPHIC)



# Winner

## SOUTH DAKOTA

1:100 000-scale metric topographic map

30 X 60 MINUTE QUADRANGLE SHOWING

- Contours and elevations in meters
- Highways, roads and other manmade structures
- Water features
- Woodland areas
- Geographic names

GEOLOGICAL SURVEY

1986

Produced by the United States Geological Survey  
 Compiled from USGS 1:24 000-scale topographic maps dated 1964-1982. Planimetry revised from aerial photographs taken 1984 and other source data. Revised information not field checked. Map edited 1986.  
 Projection and 10 000-meter grid, zone 14 Universal Transverse Mercator.  
 25 000-foot grid ticks based on South Dakota coordinate system, south zone, 1927 North American Datum.  
 To place on the predicted North American Datum 1983 move the projection lines 6 meters north and 33 meters east.  
 There may be private inholdings within the boundaries of the National or State reservations shown on this map.

CONTOUR INTERVAL 10 METERS  
 NATIONAL GEODETIC VERTICAL DATUM OF 1929  
 ELEVATIONS SHOWN TO THE NEAREST METER

THIS MAP COMPLIES WITH NATIONAL MAP ACCURACY STANDARDS

Meters	Feet
1	3.2808
2	6.5617
3	9.8425
4	13.1234
5	16.4042
6	19.6850
7	22.9659
8	26.2467
9	29.5275
10	32.8084

To convert meters to feet multiply by 3.2808  
 To convert feet to meters multiply by 0.3048

Declination	Miles
0°21'	142
1°00'	142
1°39'	142

UTM grid convergence (GN) and 1986 magnetic declination (MD) at center of map. Diagram is approximate.

Adjoining Maps	1	2	3
1 White River			
2 Chamberlain			
3 Mitchell			
4 Mission			
5 Lake Andes			
6 Madison			
7 Hamworth			
8 Atkinson			

FOR SALE BY U.S. GEOLOGICAL SURVEY, DENVER, COLORADO 80225  
 USGS WMD HISTORICAL MAP  
 JAN 0 1989  
 REC'D FILE COPY  
**Topographic Map Symbols**

Primary highway, hard surface	—
Secondary highway, hard surface	—
Light duty road, principal street, hard or improved surface	—
Other road or street, trail	—
Route marker, Interstate, U. S. State	—
Railroad, standard gauge, narrow gauge	—
Bridge, overpass, underpass	—
Tunnel, road, railroad	—
Built up area, locality, elevation	—
Airport, landing field, landing strip	—
National boundary	—
State boundary	—
County boundary	—
National or State reservation boundary	—
Land grant boundary	—
U. S. public lands survey, range, township, section	—
Range, township, section line, protected	—
Power transmission line, pipeline	—
Dam, dam with lock	—
Cemetery, building	—
Windmill, water well, spring	—
Mine shaft, salt or cave, mine, quarry, gravel pit	—
Campground, picnic area, U. S. location monument	—
Rail, cliff dwelling	—
Distorted surface: strip mine, lava, sand	—
Contours: index, intermediate, supplementary	—
Bathymetric contours: index, intermediate	—
Stream, lake, perennial, intermittent	—
Rapids, large and small, falls, large and small	—
Area to be submerged, marsh, swamp	—
Land subject to controlled inundation, woodland	—
Scrub, mangrove	—
Orchard, vineyard	—