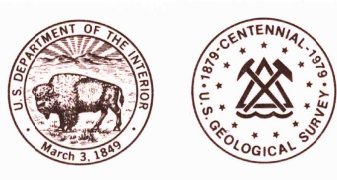


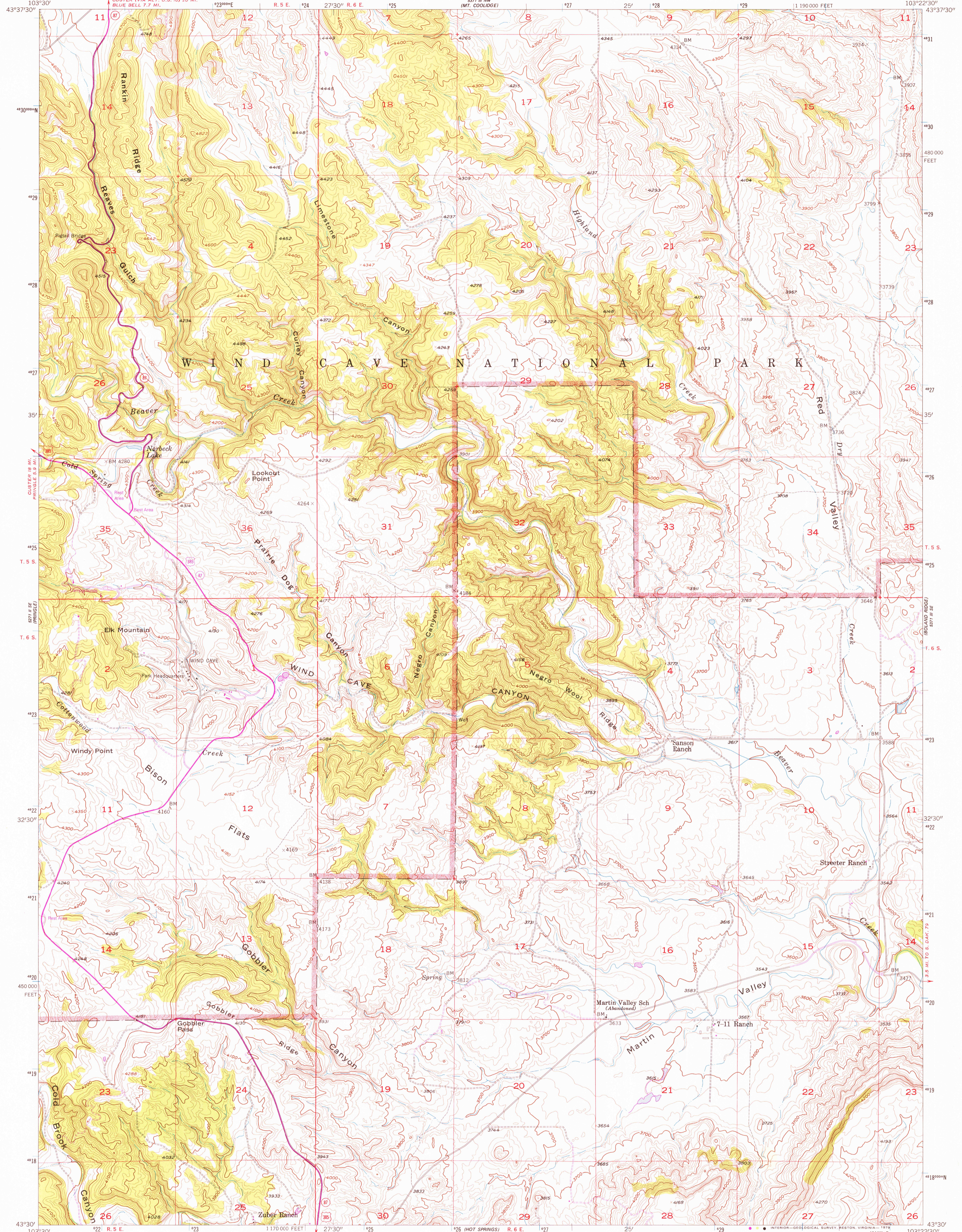
5371 N.W.
(BLU BELL 7.7 MI.)

UNITED STATES
DEPARTMENT OF THE INTERIOR
GEOLOGICAL SURVEY



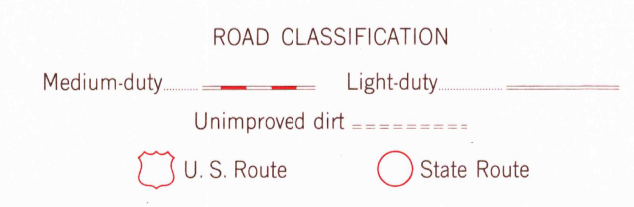
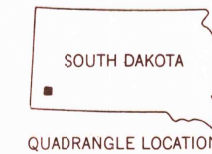
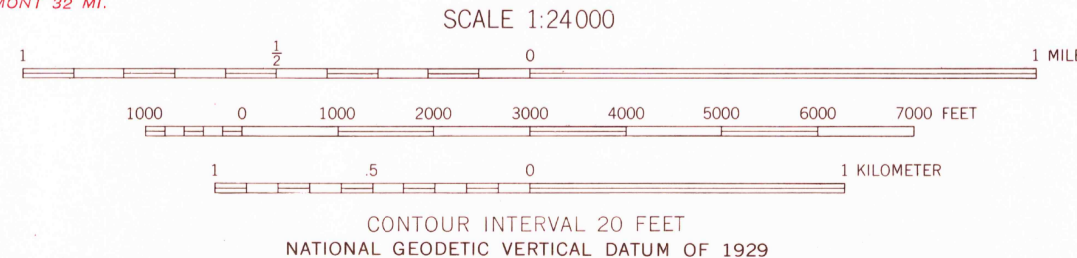
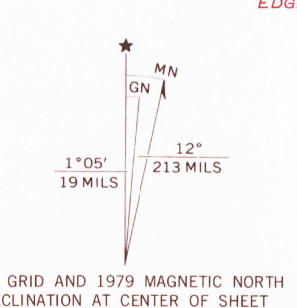
WIND CAVE QUADRANGLE
SOUTH DAKOTA—CUSTER CO.
7.5 MINUTE SERIES (TOPOGRAPHIC)

5371 N.W.
(BLU BELL 7.7 MI.)



Mapped, edited, and published by the Geological Survey
Control by USGS and USC&GS

Topography from aerial photographs by multiplex methods
Aerial photographs taken 1954. Field check 1957
Polyconic projection. 1927 North American datum
10,000-foot grid based on South Dakota coordinate system,
south zone
1000-meter Universal Transverse Mercator grid ticks,
zone 13, shown in blue
Unchecked elevations are shown in brown
There may be private inholdings within the boundaries of
the National or State reservations shown on this map
Revisions shown in purple compiled from aerial photographs
taken 1976 and other source data. This information not
field checked. Map edited 1979



USGS
Historical File
Topographic Division

WIND CAVE, S. DAK.
N 4330—W 10322.5/7.5
1957
PHOTOREVISED 1979
AMS 5371 III SW—SERIES V873

THIS MAP COMPLIES WITH NATIONAL MAP ACCURACY STANDARDS
FOR SALE BY U.S. GEOLOGICAL SURVEY, DENVER, COLORADO 80225, OR RESTON, VIRGINIA 22092
A FOLDER DESCRIBING TOPOGRAPHIC MAPS AND SYMBOLS IS AVAILABLE ON REQUEST

JUL 18 1979

1600