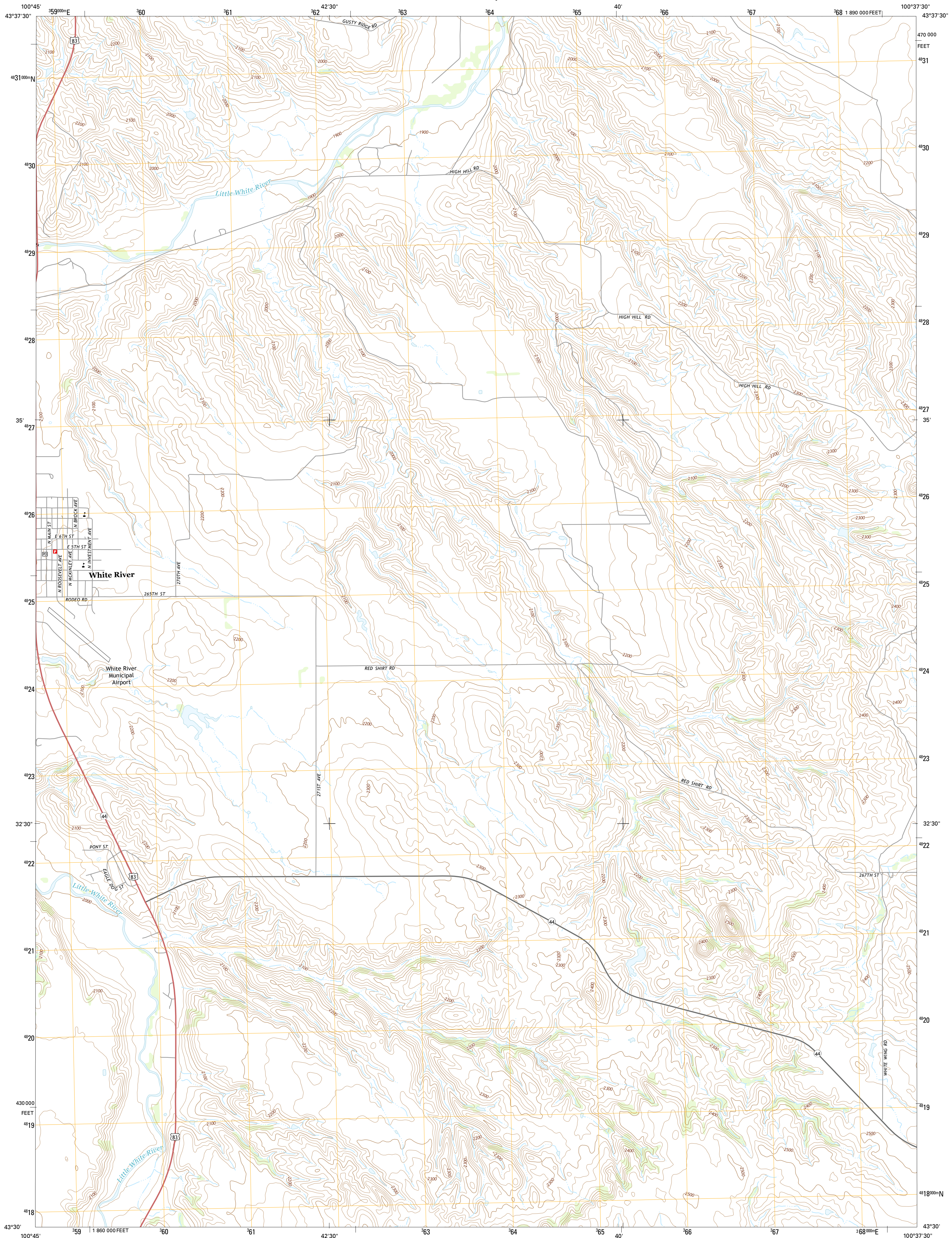




U.S. DEPARTMENT OF THE INTERIOR  
U.S. GEOLOGICAL SURVEY



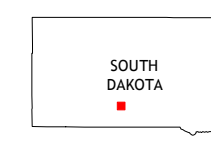
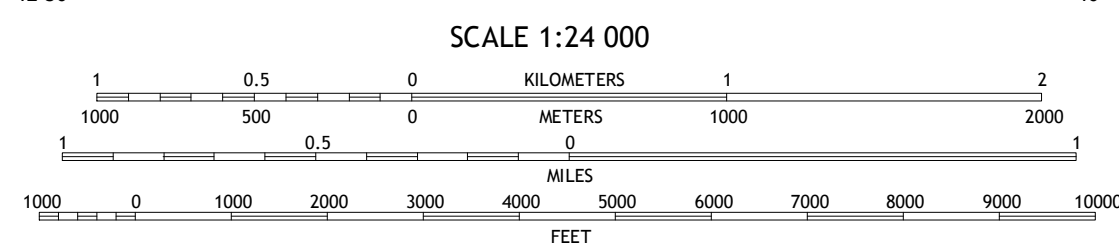
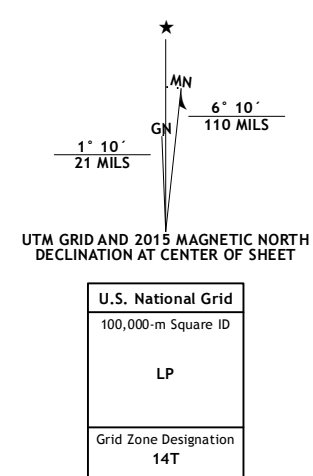
WHITE RIVER EAST QUADRANGLE  
SOUTH DAKOTA-MELLETTA CO.  
7.5-MINUTE SERIES



Produced by the United States Geological Survey  
North American Datum of 1983 (NAD83)  
World Geodetic System of 1984 (WGS84). Projection and  
1 000-meter grid: Universal Transverse Mercator, Zone 14T  
10 000-foot ticks: South Dakota Coordinate System of 1983  
(south zone)

This map is not a legal document. Boundaries may be  
generalized for this map scale. Private lands within government  
reservations may not be shown. Obtain permission before  
entering private lands.

Imagery.....NAIP, July 2014  
Roads.....HERE, 2013-2014  
Names.....GNIS, 2015  
Hydrography.....National Hydrography Dataset, 2014  
Contours.....National Elevation Dataset, 2012  
Boundaries.....Multiple sources; see metadata file 1972-2015  
Public Land Survey System.....BLM, 2015



QUADRANGLE LOCATION

ROAD CLASSIFICATION

Expressway  
Secondary Hwy  
Ramp  
Interstate Route  
US Route  
State Route

Local Connector  
Local Road  
4WD  
State Route

1	2	3
4	5	6
7	8	

ADJOINING QUADRANGLES

1 West of Westover  
2 Westover  
3 White River NE  
4 White River West  
5 White River SE  
6 Soldier Creek NE  
7 Mission NW  
8 Mission NE

WHITE RIVER EAST, SD  
2015

