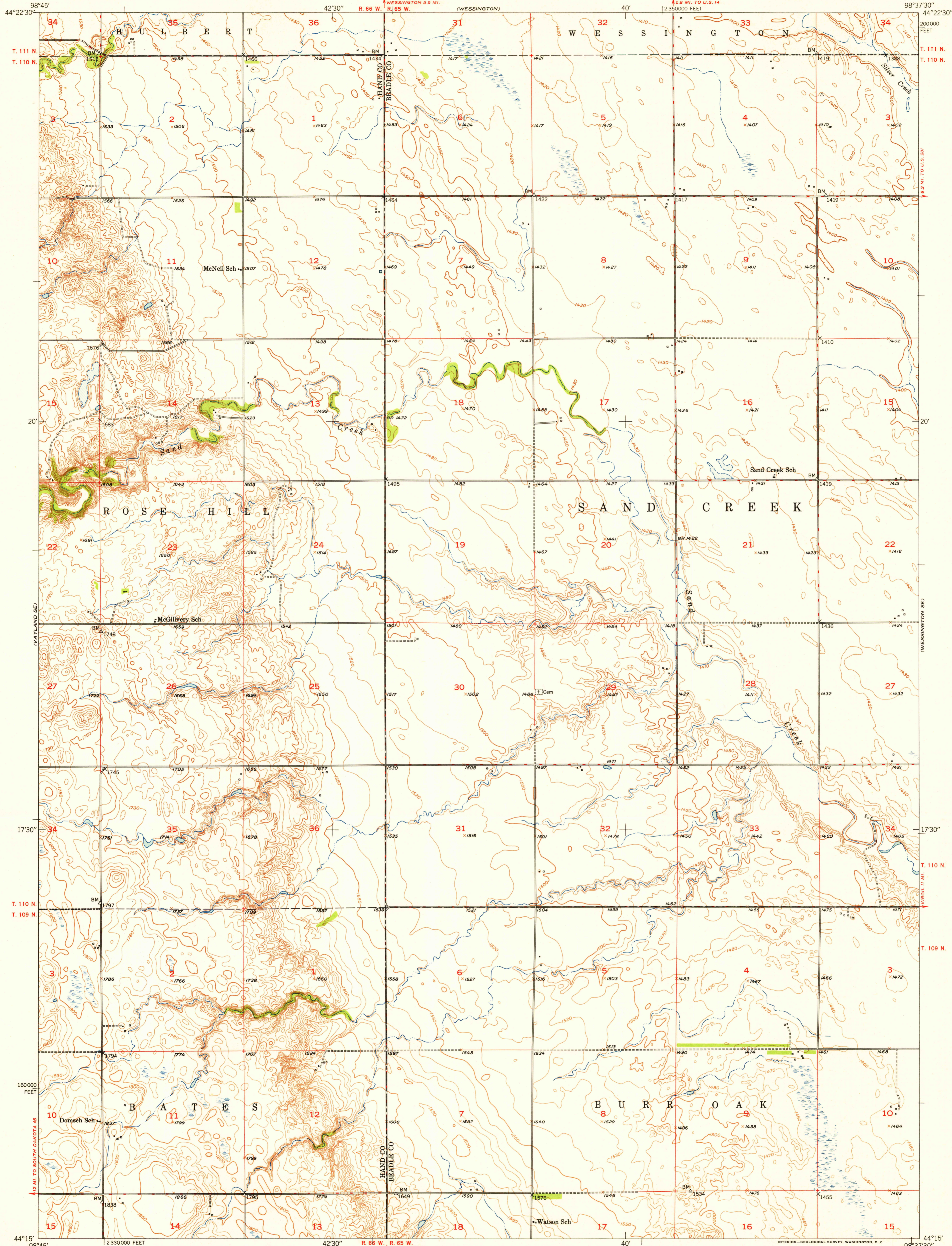
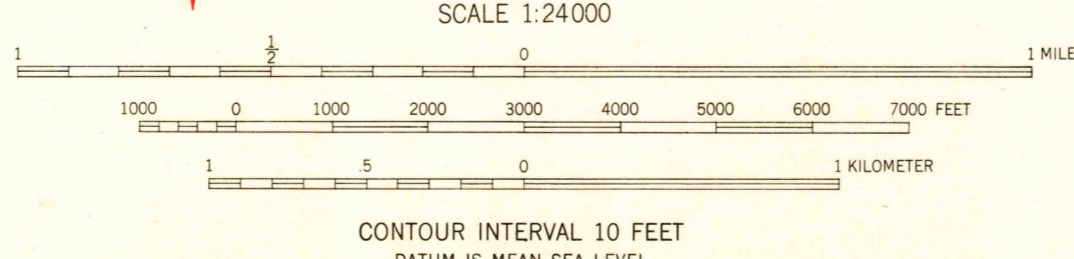


U. S. G. S.
FILE COPY
Inspection and Editing.



Maped, edited, and published by the Geological Survey as part of the Department of the Interior program for the development of the Missouri River Basin Control by USGS and USC&GS
Culture and drainage in part compiled from aerial photographs taken 1948
Topography by plane-table methods 1949
Polyconic projection. 1927 North American datum
10,000-foot grid based on South Dakota coordinate system, north zone



ROAD CLASSIFICATION

HARD-SURFACE ALL WEATHER ROADS	DRY WEATHER ROADS
Heavy-duty LANE IS LANE	Improved dirt
Medium-duty LANE IS LANE	Unimproved dirt
Loose-surface, graded, or narrow hard-surface	
U. S. Route	State Route

WESSINGTON SW, S. DAK.
N4415-W9837.5/7.5
EDITION OF 1951

THIS MAP COMPLIES WITH NATIONAL MAP ACCURACY STANDARDS
FOR SALE BY U. S. GEOLOGICAL SURVEY, FEDERAL CENTER, DENVER, COLORADO OR WASHINGTON 25, D. C.
A FOLDER DESCRIBING TOPOGRAPHIC MAPS AND SYMBOLS IS AVAILABLE ON REQUEST

U. S. G. S.
FILE COPY
Inspection and Editing.