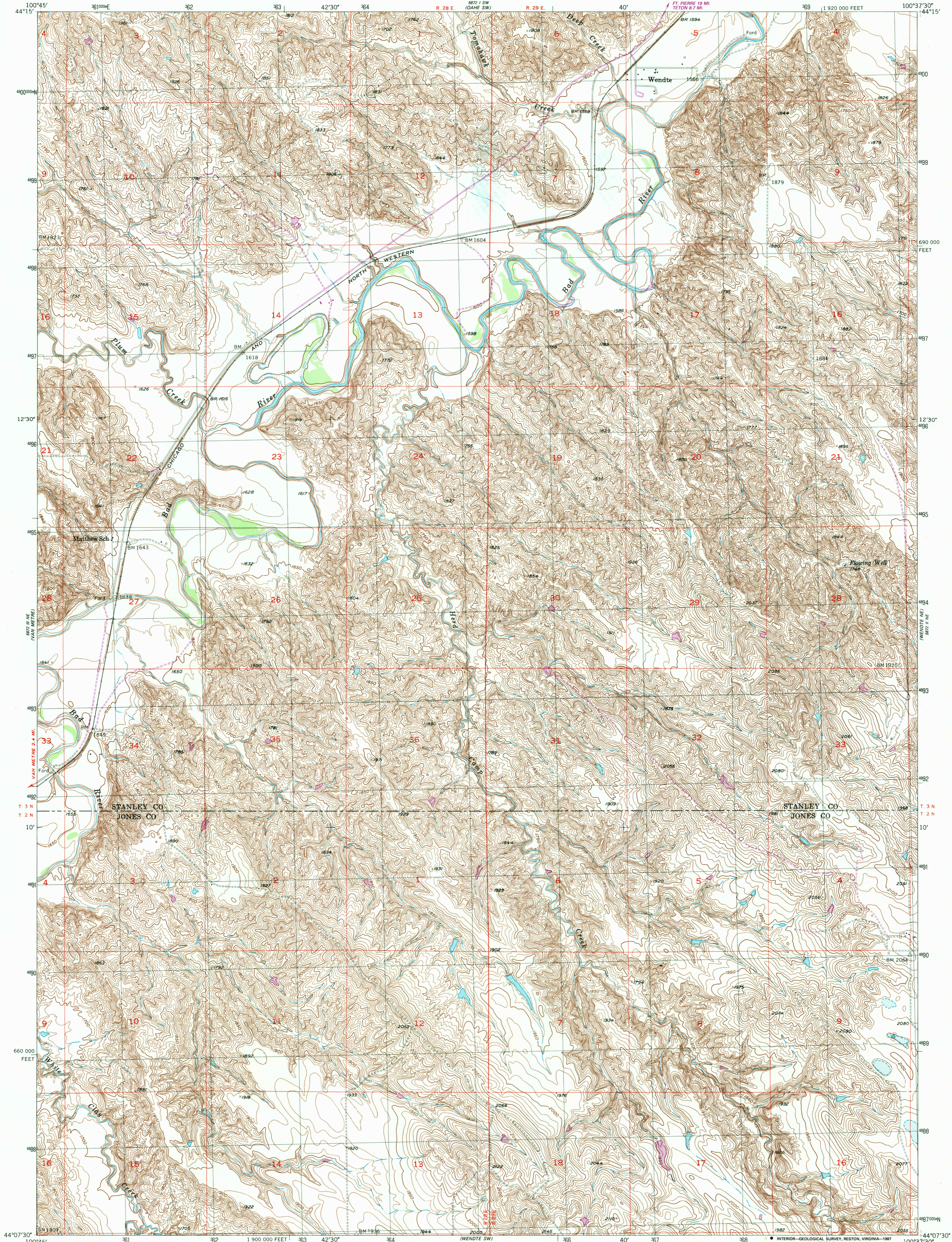
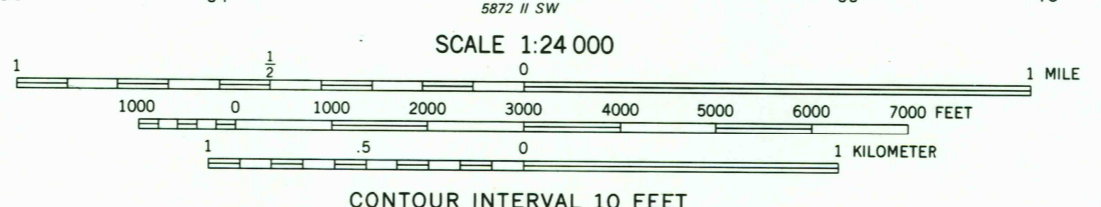


007°15' E
892°15' N

892°15' E
007°15' N

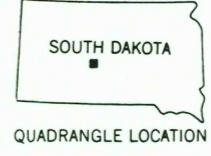


Mapped, edited, and published by the Geological Survey as part of the Department of the Interior program for the development of the Missouri River Basin
Control by USGS and USC&GS
Topography from aerial photographs by multiplex methods
Aerial photographs taken 1948. Field check 1953
Polyconic projection. 1927 North American datum
10,000-foot grid based on South Dakota coordinate system, south zone
1000-meter Universal Transverse Mercator grid ticks zone 14, shown in blue
To place on the predicted North American Datum 1983 move the projection lines 6 meters north and 35 meters east as shown by dashed corner ticks
Revisions shown in purple compiled from aerial photographs taken 1983 and other sources. This information not field checked. Map edited 1987



ROAD CLASSIFICATION

| | | | |
|-------------|----------------|-----------------|----------------|
| Heavy-duty | 4 LANE 16 LANE | Light-duty | 2 LANE 16 LANE |
| Medium-duty | 4 LANE 16 LANE | Unimproved dirt | --- |
| U. S. Route | ⬢ | State Route | ○ |



THIS MAP COMPLIES WITH NATIONAL MAP ACCURACY STANDARDS
FOR SALE BY U. S. GEOLOGICAL SURVEY, DENVER, COLORADO 80225, OR RESTON, VIRGINIA 22092
A FOLDER DESCRIBING TOPOGRAPHIC MAPS AND SYMBOLS IS AVAILABLE ON REQUEST

WENDE, S. DAK.
44100-B6-TF-024
1953
PHOTOREVISED 1987
DMA 5872 II NW-SERIES V873

