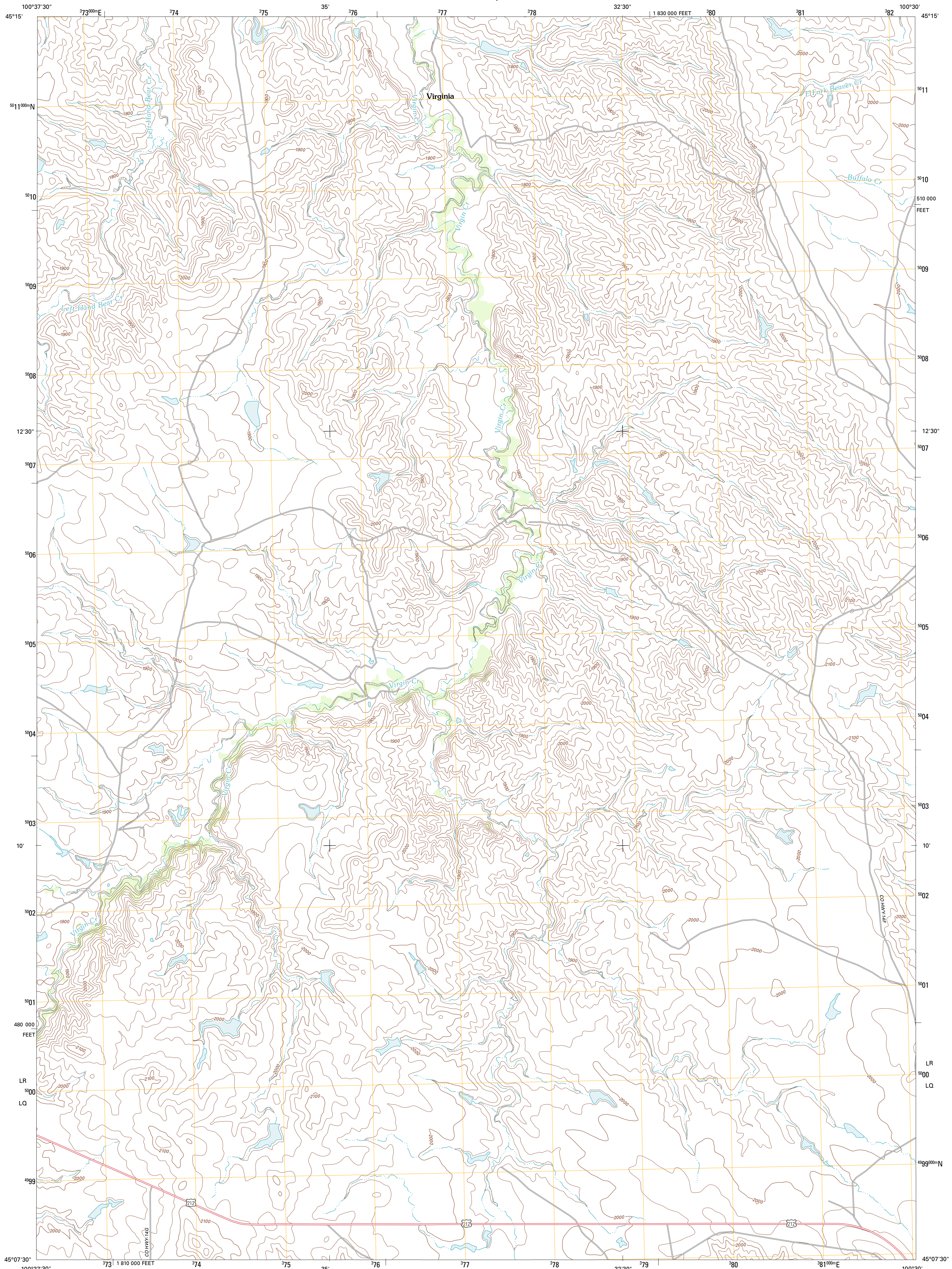




U.S. DEPARTMENT OF THE INTERIOR  
U. S. GEOLOGICAL SURVEY

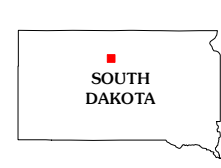
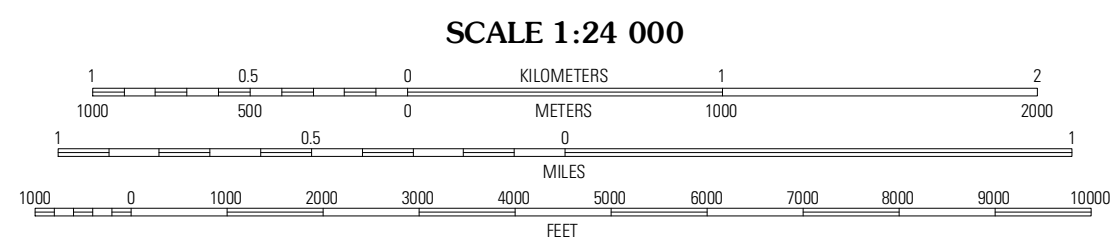
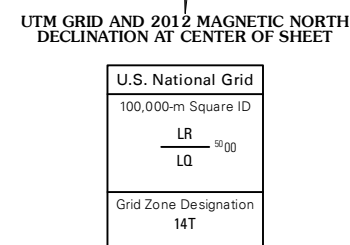


VIRGINIA QUADRANGLE  
SOUTH DAKOTA-DEWEY CO.  
7.5-MINUTE SERIES



Produced by the United States Geological Survey  
North American Datum of 1983 (NAD83)  
World Geodetic System of 1984 (WGS84). Projection and  
1 000-meter grid: Universal Transverse Mercator, Zone 14T  
10 000-foot ticks: South Dakota Coordinate System of 1983  
(north zone)

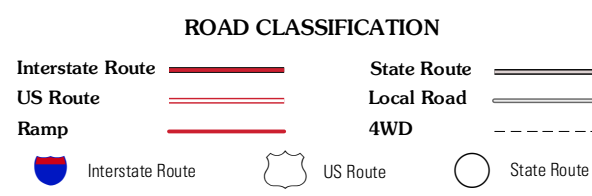
Imagery.....NAP, August 2010  
Roads.....©2006-2011 TomTom  
Names.....©2006-2011 TomTom  
Hydrography.....National Hydrography Dataset, 2010  
Contours.....National Elevation Dataset, 2006  
Boundaries.....Census, IBWC, IBC, USGS, 1972 - 2010



QUADRANGLE LOCATION

Trail City SW	Promise	Moreau
La Plant	Virginia	Patch Skin Buttes
La Plant SW	Stove Creek	Patch Skin Buttes SW

ADJOINING 7.5 QUADRANGLES



CONTOUR INTERVAL 20 FEET  
NORTH AMERICAN VERTICAL DATUM OF 1988

This map was produced to conform with the  
National Geospatial Program US Topo Product Standard, 2011.  
A metadata file associated with this product is draft version 0.6.3

VIRGINIA, SD  
2012