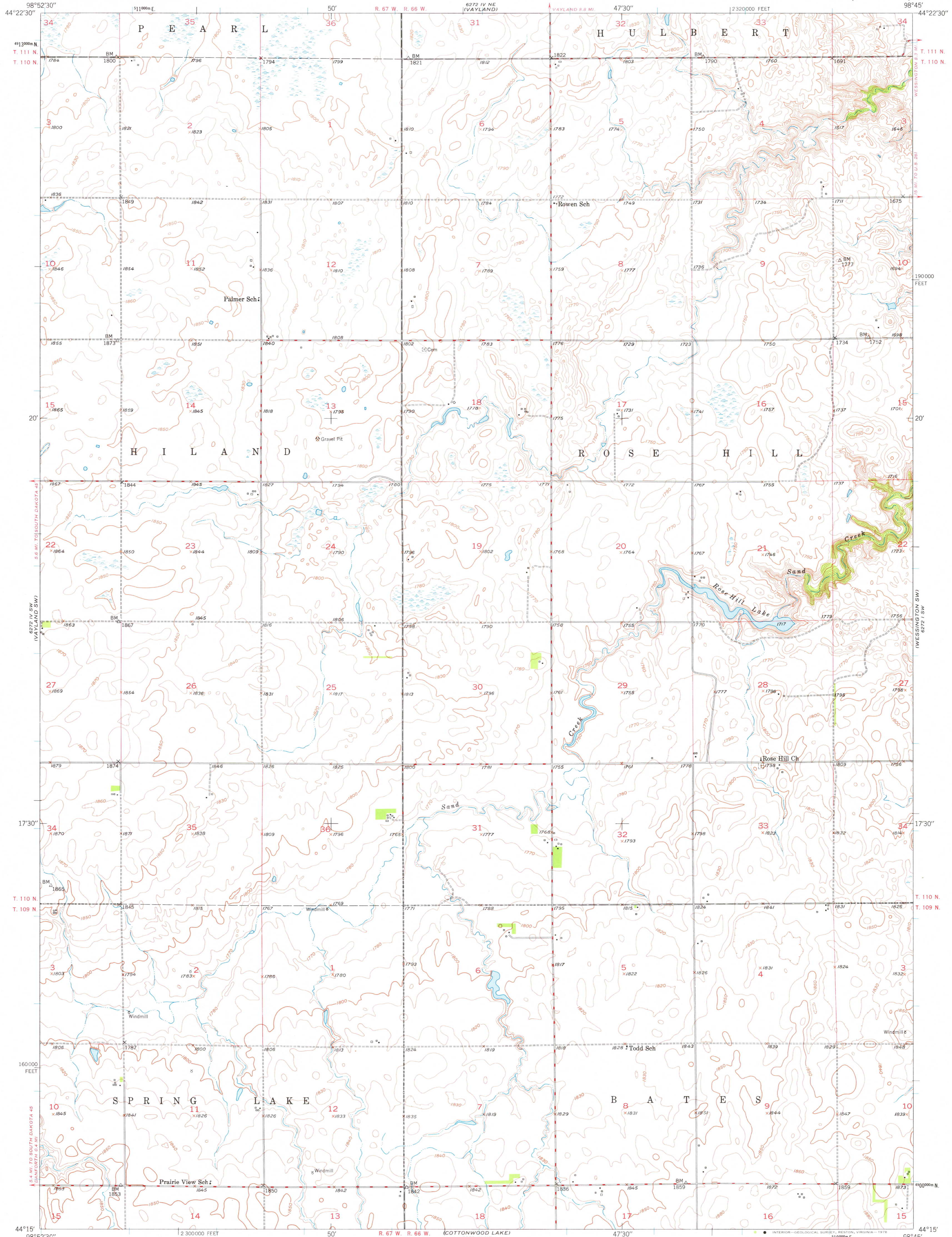
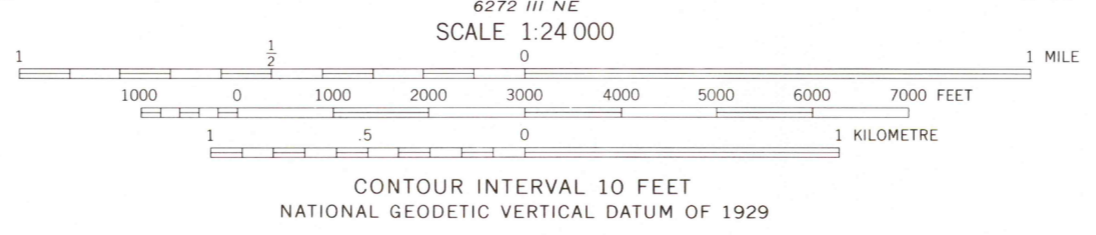
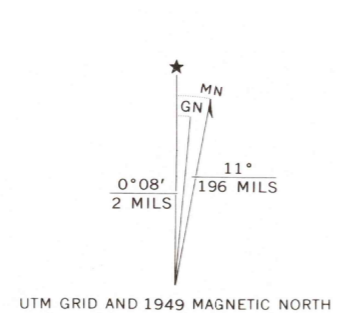


UNITED STATES  
DEPARTMENT OF THE INTERIOR  
GEOLOGICAL SURVEY

VAYLAND SE QUADRANGLE  
SOUTH DAKOTA-HAND CO.  
7.5 MINUTE SERIES (TOPOGRAPHIC)



Mapped, edited, and published by the Geological Survey as part of the Department of the Interior program for the development of the Missouri River Basin Control by USGS and USC&GS  
Culture and drainage in part compiled from aerial photographs taken 1948  
Topography by plane-table methods 1949  
Polyconic projection. 1927 North American datum 10,000-foot grid based on South Dakota coordinate system, north zone  
1000-metre Universal Transverse Mercator grid ticks, zone 14, shown in blue



ROAD CLASSIFICATION

|   |                |                 |       |
|---|----------------|-----------------|-------|
| Heavy-duty                                    | 4 LANE 16 LANE | Improved dirt   | ----- |
| Medium-duty                                   | 4 LANE 16 LANE | Unimproved dirt | ----- |
| Loose-surface, graded, or narrow hard-surface | -----          | U. S. Route     | ○     |
|   |                | State Route     | ○     |

THIS MAP COMPLIES WITH NATIONAL MAP ACCURACY STANDARDS  
FOR SALE BY U. S. GEOLOGICAL SURVEY, DENVER, COLORADO 80225, OR RESTON, VIRGINIA 22092  
A FOLDER DESCRIBING TOPOGRAPHIC MAPS AND SYMBOLS IS AVAILABLE ON REQUEST

USGS  
Historical File  
Topographic Division  
1949  
VAYLAND SE, S. DAK.  
N4415-W9845/7.5  
AMS 6272 IV SE-SERIES V873

DEC 02 1976

1300