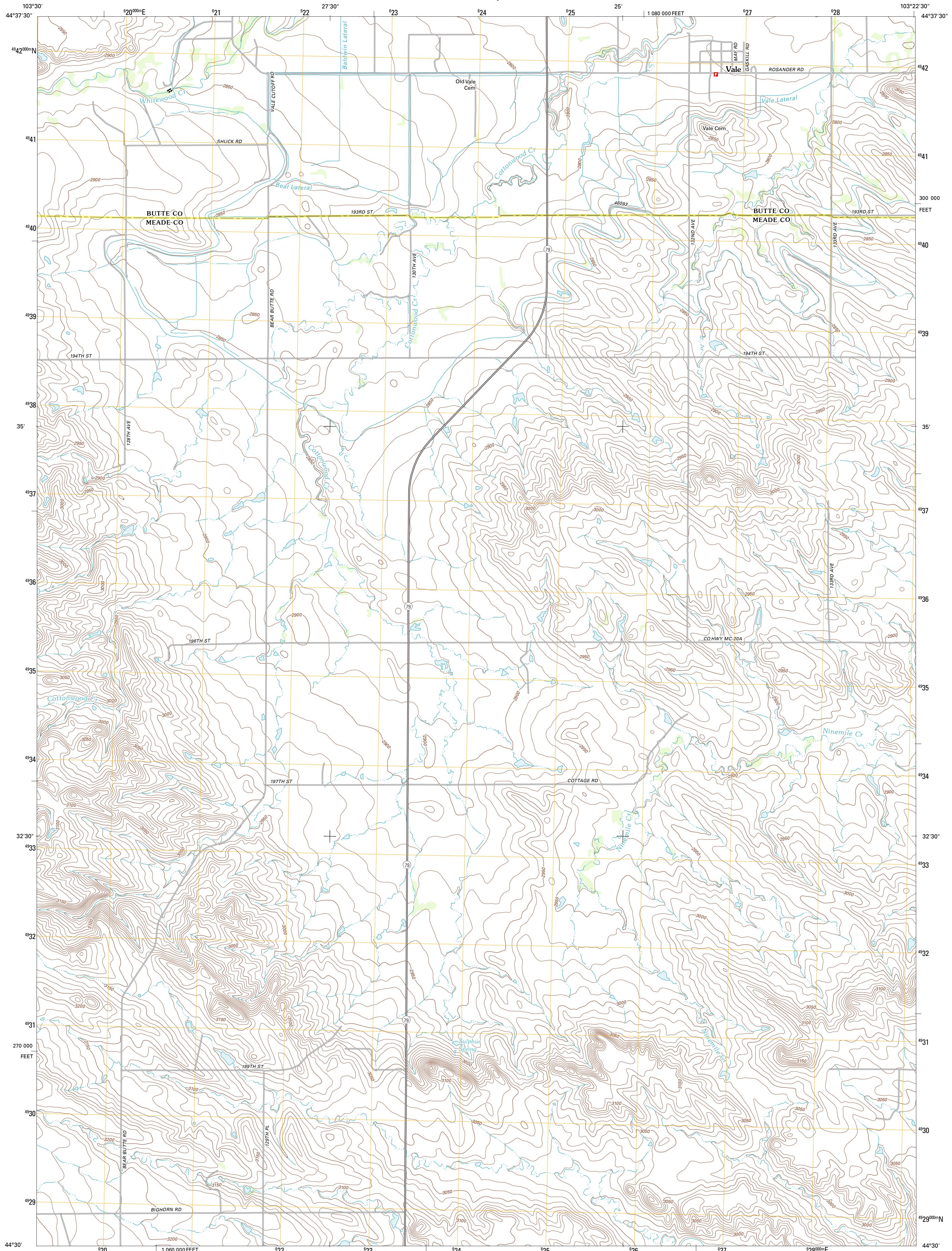




U.S. DEPARTMENT OF THE INTERIOR
U. S. GEOLOGICAL SURVEY

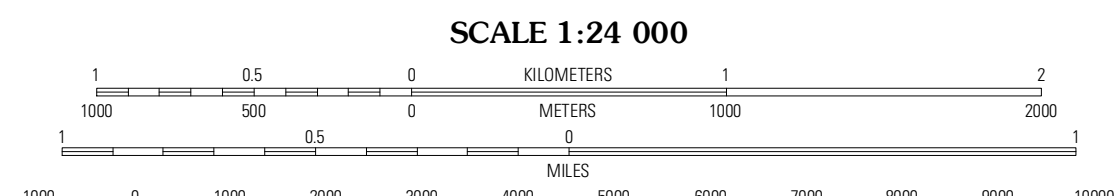
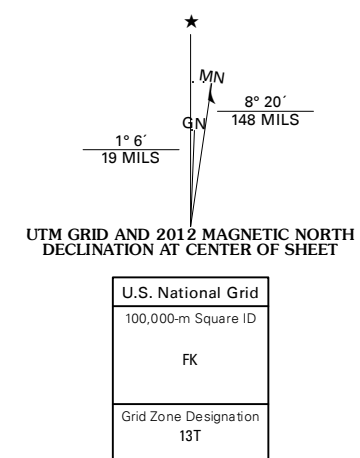


VALE QUADRANGLE
SOUTH DAKOTA
7.5-MINUTE SERIES

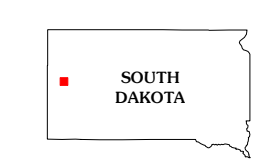


Produced by the United States Geological Survey
North American Datum of 1983 (NAD83)
World Geodetic System of 1984 (WGS84). Projection and
1 000-meter grid: Universal Transverse Mercator, Zone 13T
10 000-foot ticks: South Dakota Coordinate System of 1983
(north zone)

Imagery.....NAIP, August 2010
Roads.....©2006-2011 TomTom
Names.....GNS, 2011
Hydrography.....National Hydrography Dataset, 2010
Contours.....National Elevation Dataset, 2006
Boundaries.....Census, IBC, USGS, 1972 - 2010



CONTOUR INTERVAL 10 FEET
NORTH AMERICAN VERTICAL DATUM OF 1988
This map was produced to conform with the
National Geospatial Program US Topo Product Standard, 2011.
A metadata file associated with this product is draft version 0.6.3



QUADRANGLE LOCATION

| | | |
|---------------|------------|---------------|
| Nisland | Newell | Vale NE |
| Saint Onge SE | Vale | Vale SE |
| Sturgis | Fort Meade | Fort Meade NE |

ROAD CLASSIFICATION

| | |
|------------------|-------------|
| Interstate Route | State Route |
| US Route | Local Road |
| Ramp | 4WD |
| Interstate Route | US Route |
| | State Route |

VALE, SD
2012

ADJOINING 7.5' QUADRANGLES