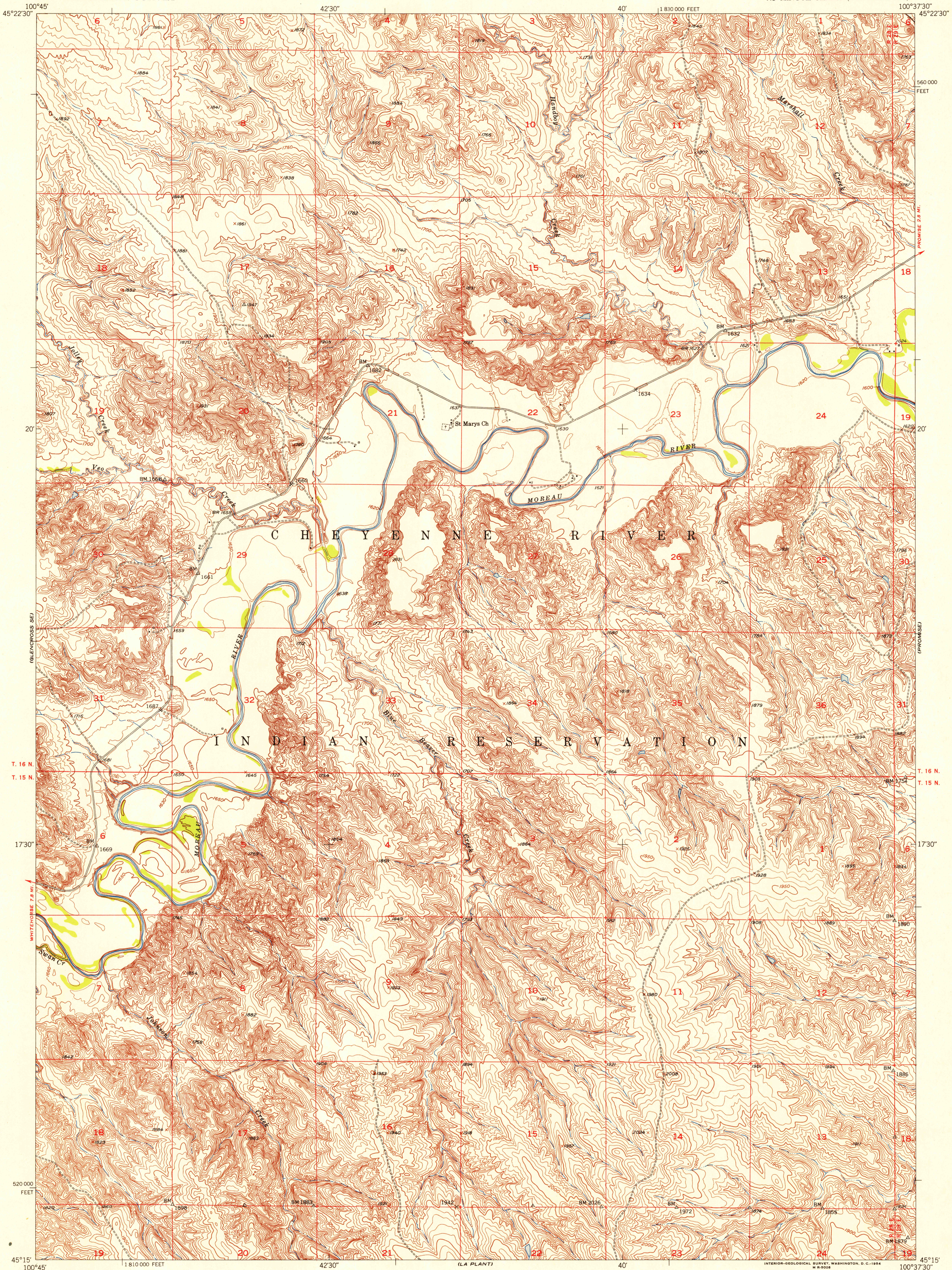


U.S.G.S.  
FILE COPY  
TOPOGRAPHIC DIVISION

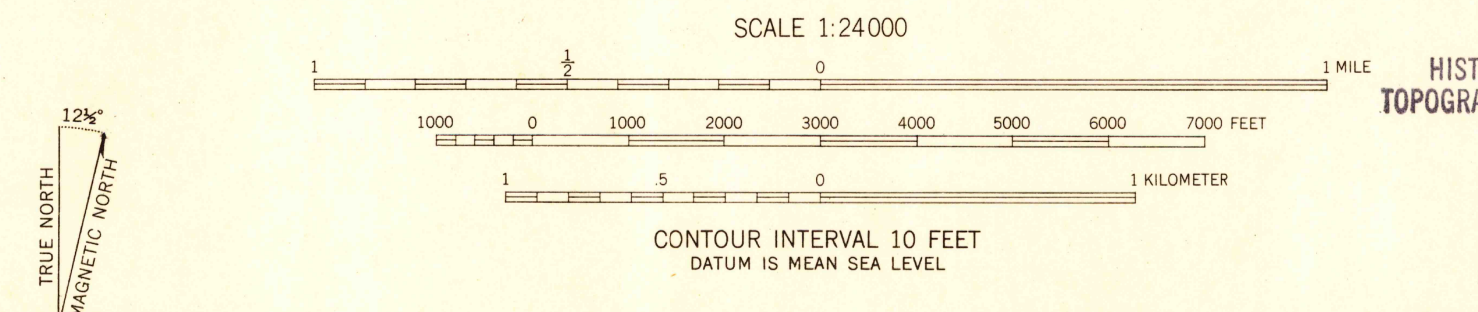
U.S.G.S.  
FILE COPY  
TOPOGRAPHIC DIVISION



100°45'  
45°22'30"  
1810 000 FEET  
520 000 FEET  
45°15'

100°37'30"  
45°22'30"  
560 000 FEET  
1730'  
100°37'30"

Mapped, edited, and published by the Geological Survey as part of the Department of the Interior program for the development of the Missouri River Basin Control by USGS and USC&GS  
Topography from aerial photographs by multiplex methods  
Aerial photographs taken 1949. Field check 1952  
Polyconic projection. 1927 North American datum  
10,000-foot grid based on South Dakota coordinate system, north zone



USGS  
HISTORICAL FILE  
TOPOGRAPHIC DIVISION

ROAD CLASSIFICATION  
Heavy-duty 4 LANE 6 LANE Light-duty  
Medium-duty 4 LANE 6 LANE Unimproved dirt  
U. S. Route State Route

TRAIL CITY SW, S. DAK.  
N4515-W10037.5/7.5

THIS MAP COMPLIES WITH NATIONAL MAP ACCURACY STANDARDS  
FOR SALE BY U. S. GEOLOGICAL SURVEY, FEDERAL CENTER, DENVER, COLORADO OR WASHINGTON 25, D. C.  
A FOLDER DESCRIBING TOPOGRAPHIC MAPS AND SYMBOLS IS AVAILABLE ON REQUEST

1952

OCT 22 1954  
2635