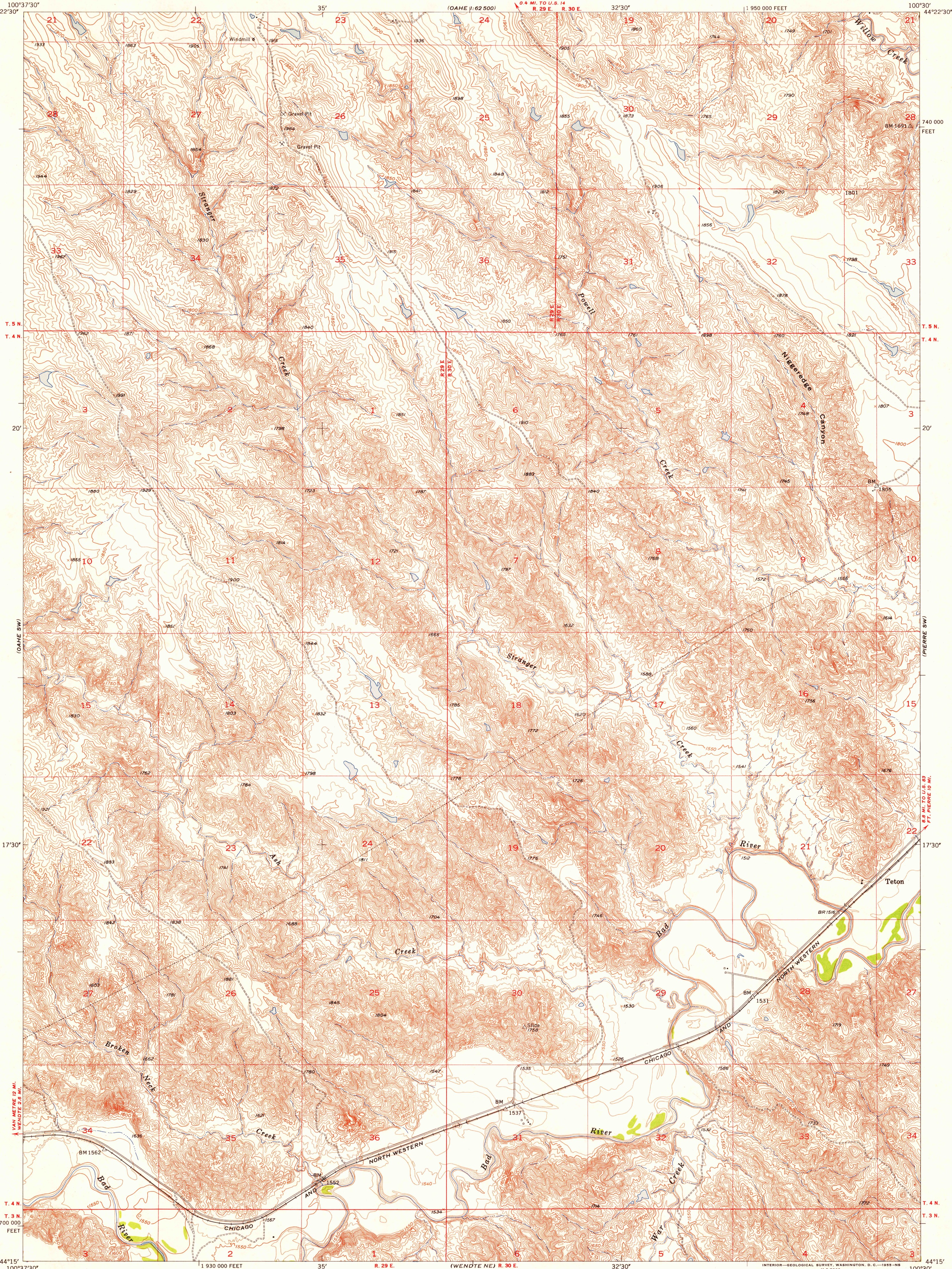
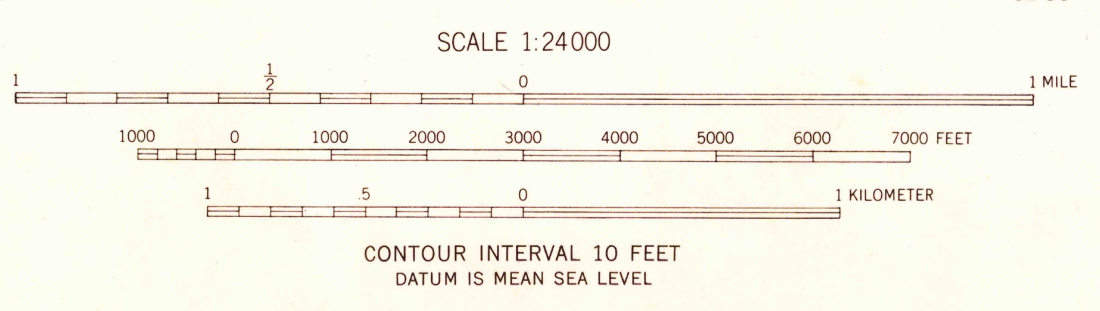


U.S.G.S.  
FILE COPY  
TOPOGRAPHIC DIVISION



Mapped, edited, and published by the Geological Survey as part of the Interior program for the development of the Missouri River Basin. Control by USGS and USC&GS. Topography from aerial photographs by multiplex methods. Aerial photographs taken 1948. Field check 1953. Polyconic projection. 1927 North American datum. 10,000-foot grid based on South Dakota coordinate system, south zone.



USGS  
HISTORICAL FILE  
TOPOGRAPHIC DIVISION  
SOUTH DAKOTA  
QUADRANGLE LOCATION

ROAD CLASSIFICATION

Heavy-duty	4 LANE 6 LANE	Light-duty	2 LANE 4 LANE
Medium-duty	4 LANE 6 LANE	Unimproved dirt	=====

U.S. Route (square symbol) State Route (circle symbol)

TETON, S. DAK.  
SE/4 OAHM 15' QUADRANGLE  
N4415-W10030/7.5  
1953

U.S.G.S.  
FILE COPY  
TOPOGRAPHIC DIVISION