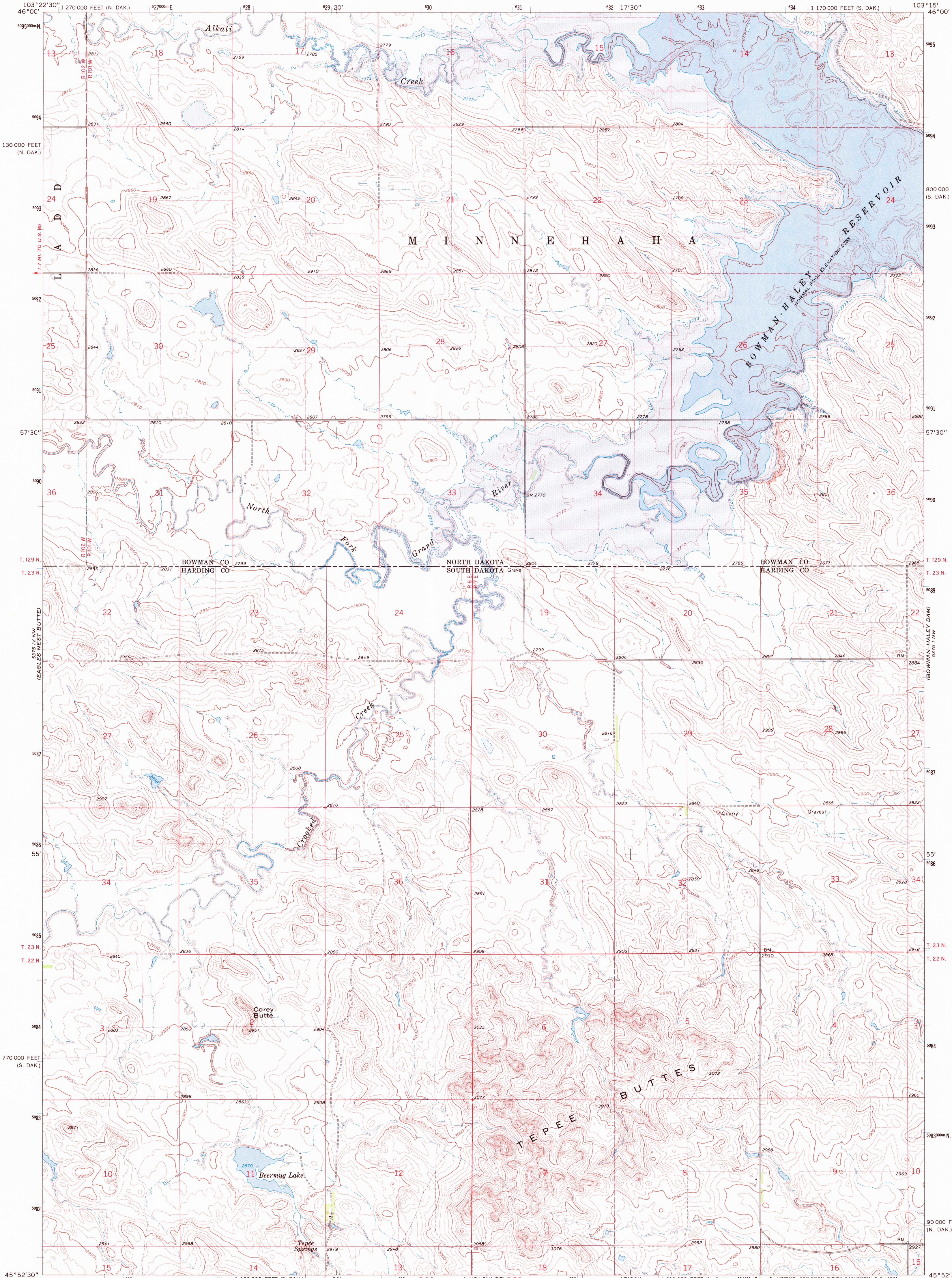
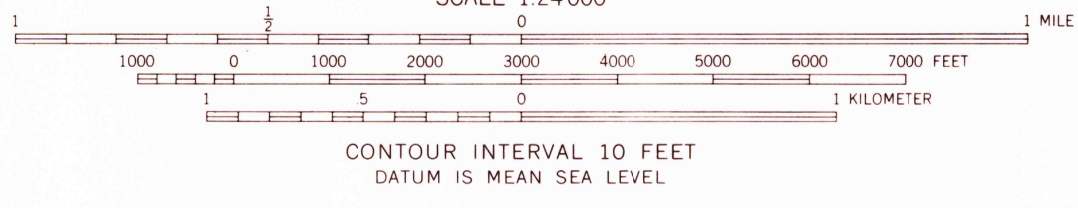
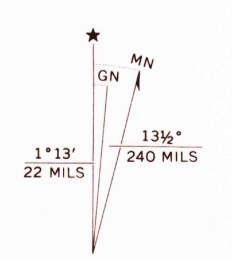


UNITED STATES
DEPARTMENT OF THE INTERIOR
GEOLOGICAL SURVEY

TEPEE BUTTES QUADRANGLE
SOUTH DAKOTA-NORTH DAKOTA
7.5 MINUTE SERIES (TOPOGRAPHIC)

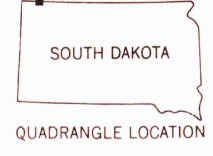


Mapped, edited, and published by the Geological Survey
Control by USGS and USC&GS
Topography by photogrammetric methods from aerial
photographs taken 1964. Field checked 1968.
Polyconic projection. 1927 North American datum
10,000-foot grids based on South Dakota coordinate system,
north zone and North Dakota system, south zone
1000-meter Universal Transverse Mercator grid ticks,
zone 13, shown in blue
Areas covered by dashed light-blue pattern
are subject to controlled inundation
Fine red dashed lines indicate selected fence and field lines where
generally visible on aerial photographs. This information is unchecked



USGS
HISTORICAL FILE
TOPOGRAPHIC DIVISION

ROAD CLASSIFICATION
Light-duty road, all weather,
improved surface Unimproved road, fair or dry
weather



THIS MAP COMPLIES WITH NATIONAL MAP ACCURACY STANDARDS
FOR SALE BY U. S. GEOLOGICAL SURVEY, DENVER, COLORADO 80225, OR WASHINGTON, D. C. 20242
AND BY THE STATE WATER COMMISSION, BISMARCK, NORTH DAKOTA 58501
A FOLDER DESCRIBING TOPOGRAPHIC MAPS AND SYMBOLS IS AVAILABLE ON REQUEST

TEPEE BUTTES, S. DAK. - N. DAK.
N4552.5-W10315.7.5

1968

AMS 5375 IV NE-SERIES V873

U.S.G.S.
FILE COPY
TOPOGRAPHIC DIVISION

2740

MAY 10 1971