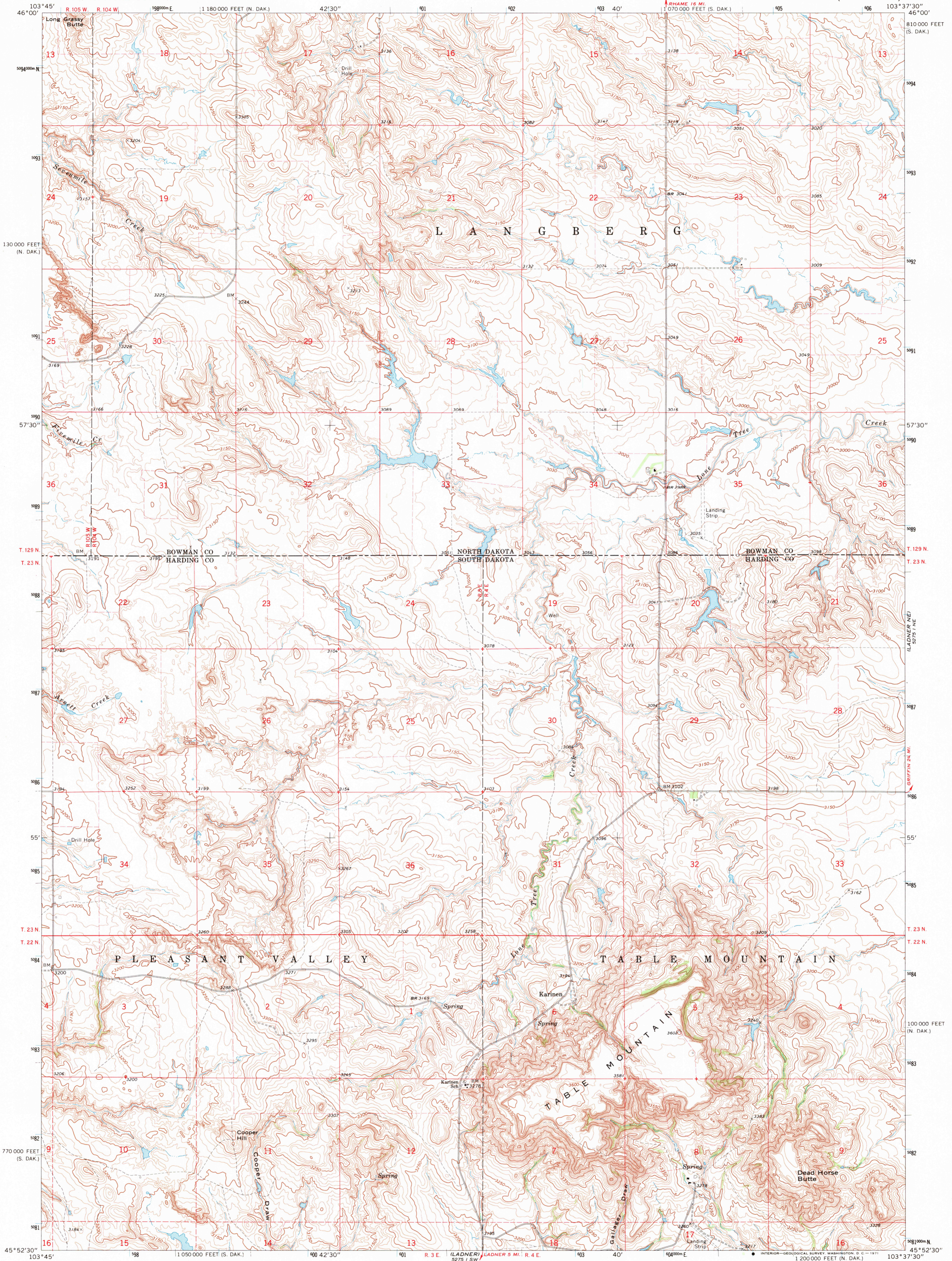
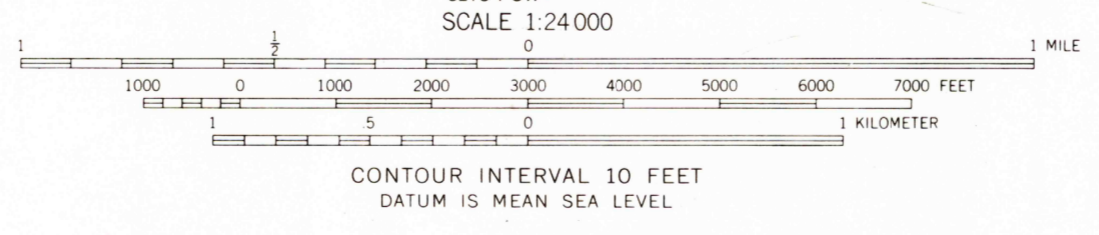
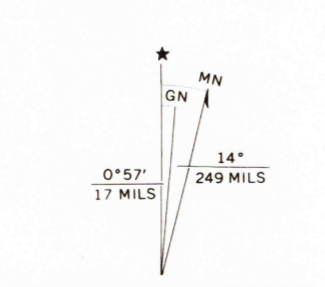


UNITED STATES
DEPARTMENT OF THE INTERIOR
GEOLOGICAL SURVEY

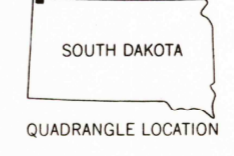
TABLE MOUNTAIN QUADRANGLE
SOUTH DAKOTA-NORTH DAKOTA
7.5 MINUTE SERIES (TOPOGRAPHIC)



Mapped, edited, and published by the Geological Survey
Control by USGS and USC&GS
Topography by photogrammetric methods from aerial photographs taken 1964. Field checked 1969
Polyconic projection. 1927 North American datum 10,000-foot grids based on South Dakota coordinate system, north zone and North Dakota coordinate system, south zone 1000-meter Universal Transverse Mercator grid ticks, zone 13, shown in blue
Fine red dashed lines indicate selected fence and field lines where generally visible on aerial photographs
This information is unchecked



ROAD CLASSIFICATION
Light-duty road, all weather, Unimproved road, fair or dry improved surface, weather



THIS MAP COMPLIES WITH NATIONAL MAP ACCURACY STANDARDS
FOR SALE BY U. S. GEOLOGICAL SURVEY, DENVER, COLORADO 80225, OR WASHINGTON, D. C. 20242
AND BY THE STATE WATER COMMISSION, BISMARCK, NORTH DAKOTA 58501
A FOLDER DESCRIBING TOPOGRAPHIC MAPS AND SYMBOLS IS AVAILABLE ON REQUEST

TABLE MOUNTAIN, S. DAK. - N. DAK.
N4525.5-W10337.5/7.5
1969
AMS 5275 1 NW-SERIES V873

SEP 13 1971

U.S. GEOLOGICAL SURVEY
HISTORICAL FILE
TOPOGRAPHIC DIVISION

RETURN TO:
USGS AND HISTORICAL MAP ARCHIVES

2650