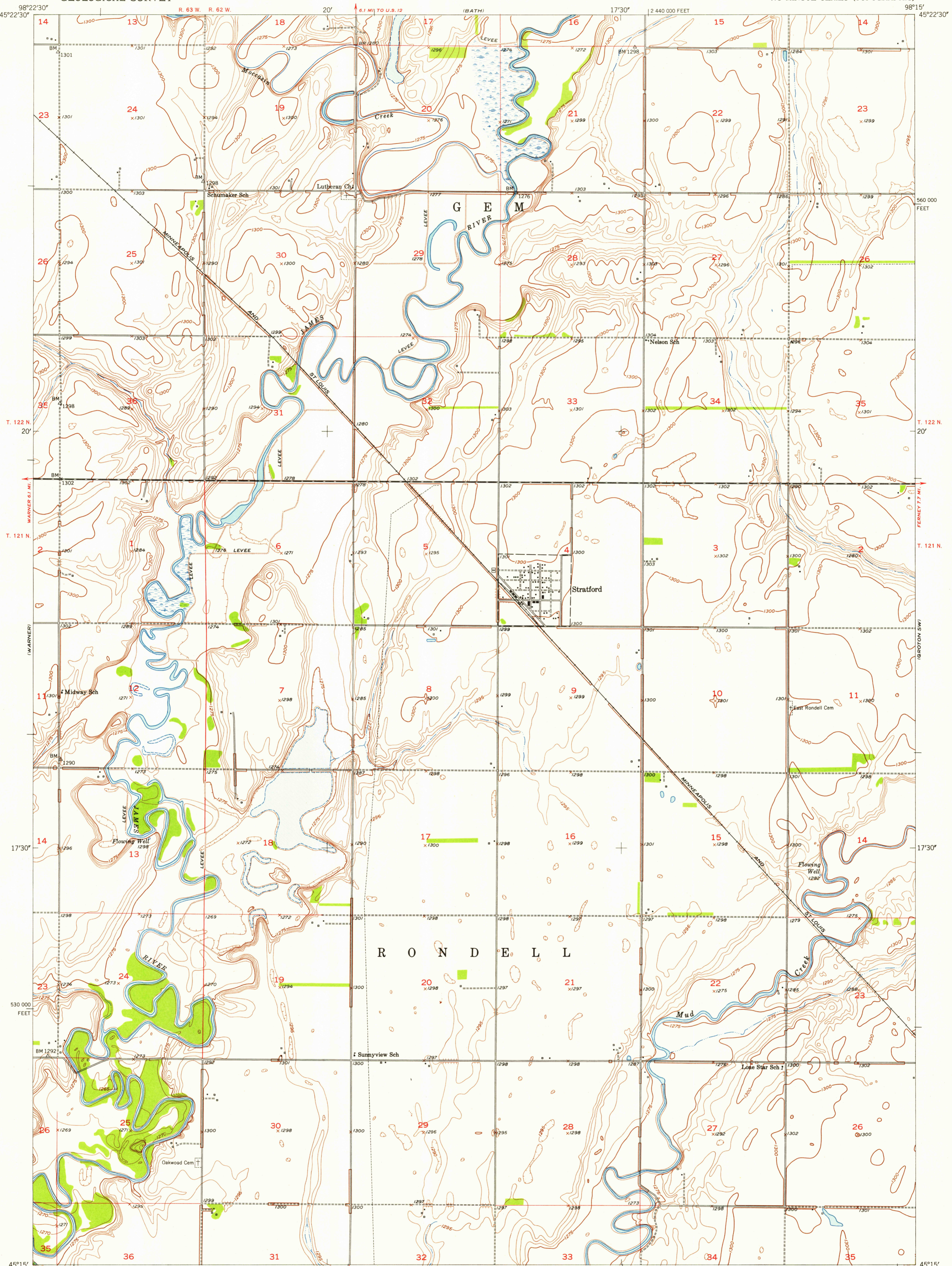
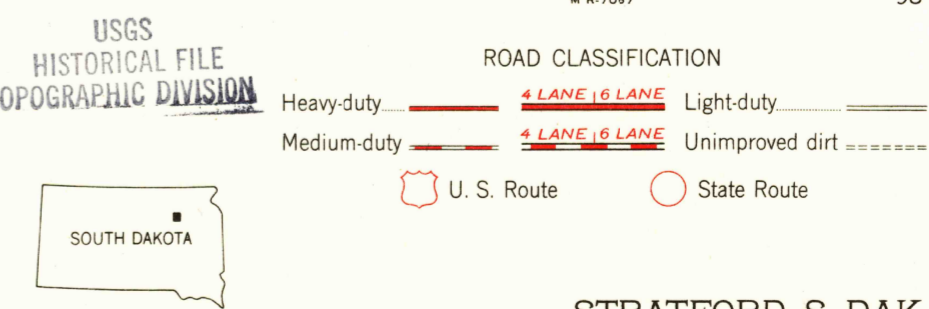
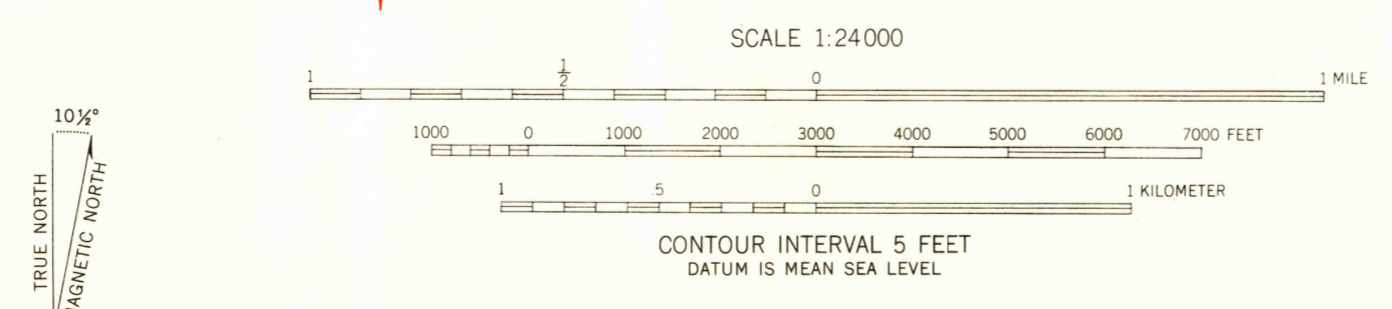


U.S.G.S.
FILE COPY
TOPOGRAPHIC DIVISION

U.S.G.S.
FILE COPY
TOPOGRAPHIC DIVISION



Mapped, edited, and published by the Geological Survey as part of the Department of the Interior program for the development of the Missouri River Basin. Control by USGS and USC&GS. Culture and drainage in part compiled from aerial photographs taken 1951. Topography by plane-table surveys 1953. Polyconic projection. 1927 North American datum. 10,000-foot grid based on South Dakota coordinate system, north zone.



STRATFORD, S. DAK.
N4515-W9815/7.5
1953