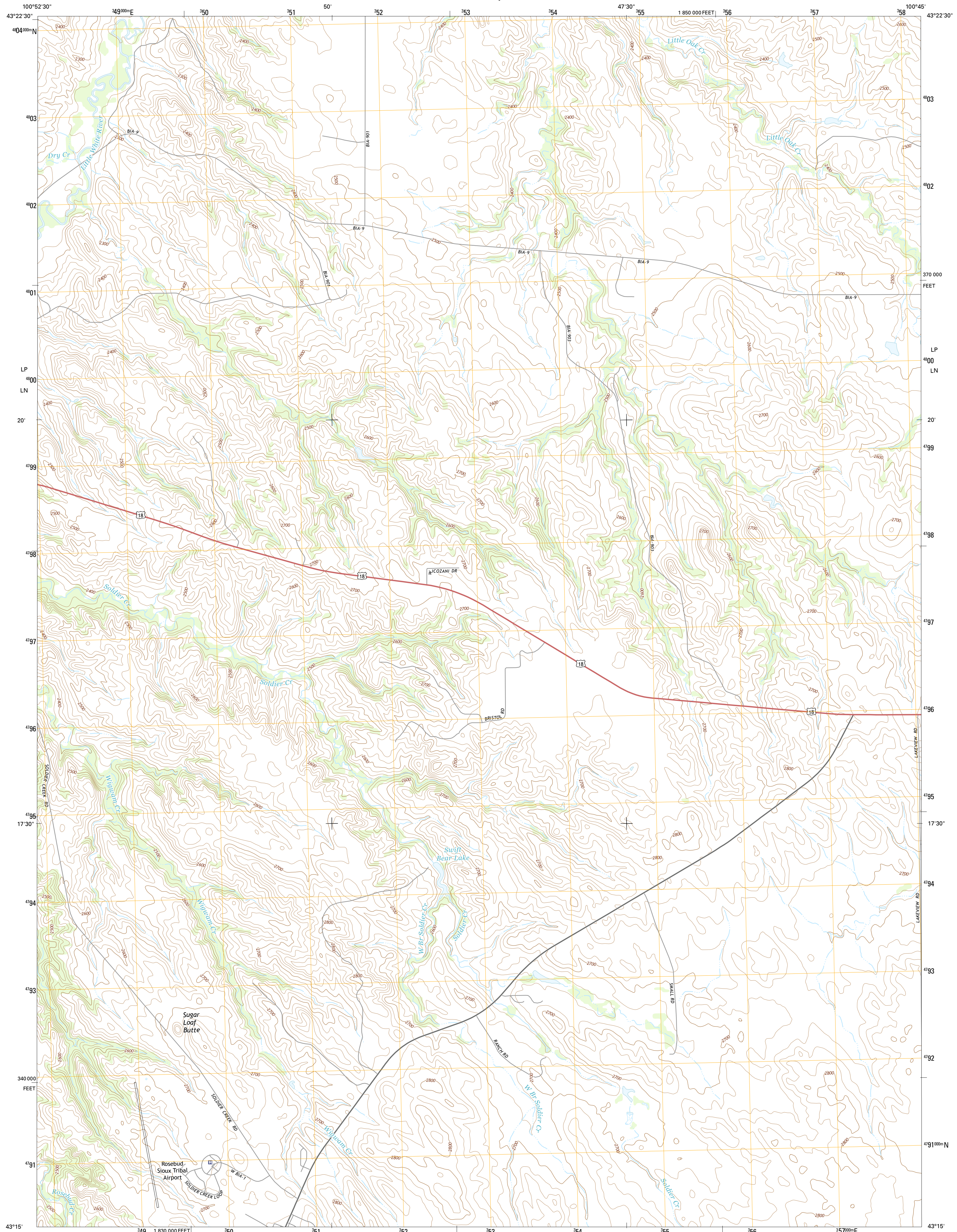




U.S. DEPARTMENT OF THE INTERIOR
U.S. GEOLOGICAL SURVEY



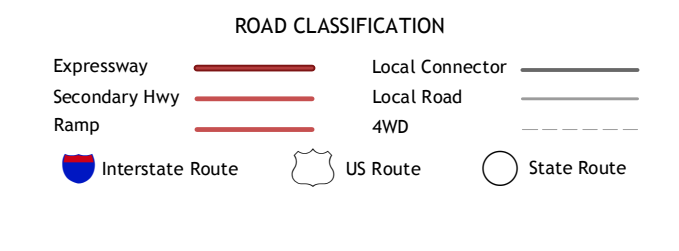
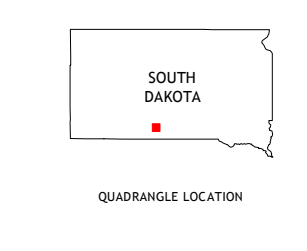
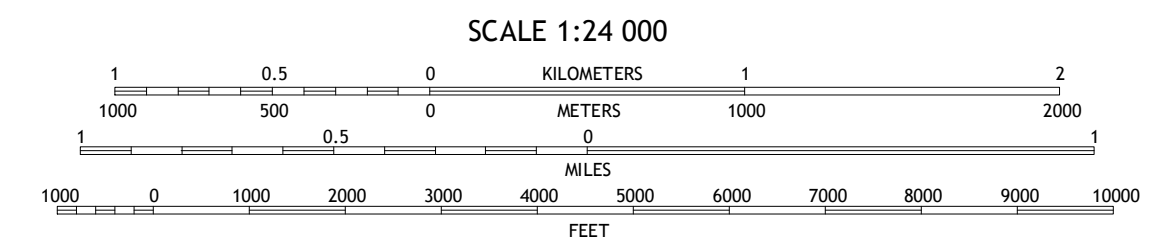
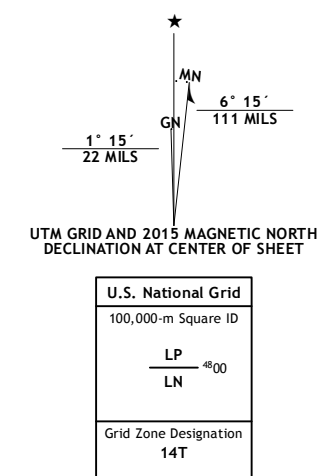
SOLDIER CREEK SE QUADRANGLE
SOUTH DAKOTA-TODD CO.
7.5-MINUTE SERIES



Produced by the United States Geological Survey
North American Datum of 1983 (NAD83)
World Geodetic System of 1984 (WGS84). Projection and
1 000-meter grid: Universal Transverse Mercator, Zone 14T
10 000-foot ticks: South Dakota Coordinate System of 1983
(south zone)

This map is not a legal document. Boundaries may be
generalized for this map scale. Private lands within government
reservations may not be shown. Obtain permission before
entering private lands.

Imagery.....NAIP, July 2014
Roads.....HERE, ©2013 2014
Names.....GNIS, 2015
Hydrography.....National Hydrography Dataset, 2014
Contours.....National Elevation Dataset, 2012
Boundaries.....Multiple sources; see metadata file 1972-2015
Public Land Survey System.....BLM, 2015



ADJOINING QUADRANGLES

1	2	3
4	5	6
7	8	

1 Soldier Creek NW
2 Soldier Creek NE
3 Mission NW
4 Soldier Creek
5 Mission
6 Saint Francis
7 Rosebud
8 Osbornville NW

SOLDIER CREEK SE, SD
2015

