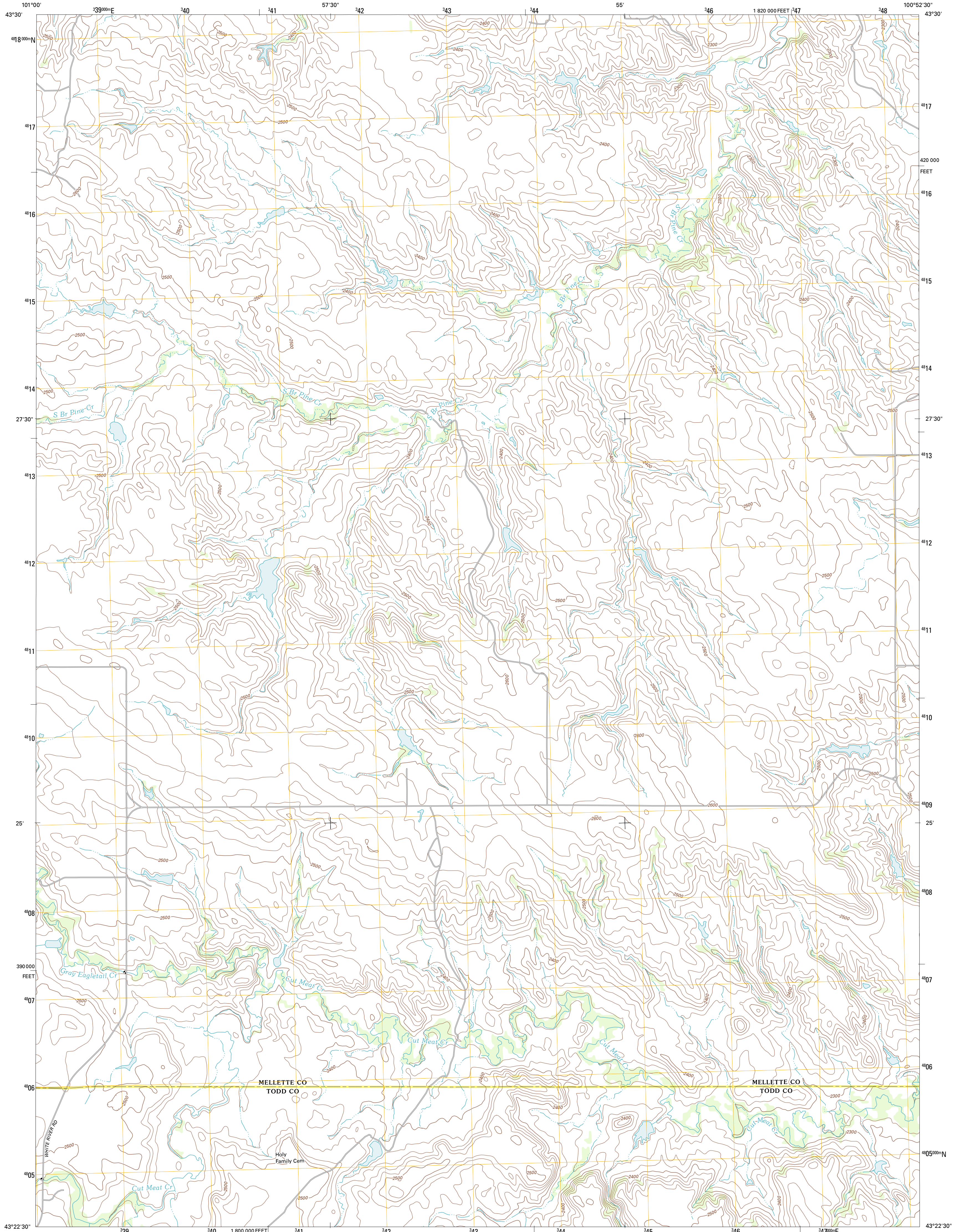




U.S. DEPARTMENT OF THE INTERIOR
U. S. GEOLOGICAL SURVEY

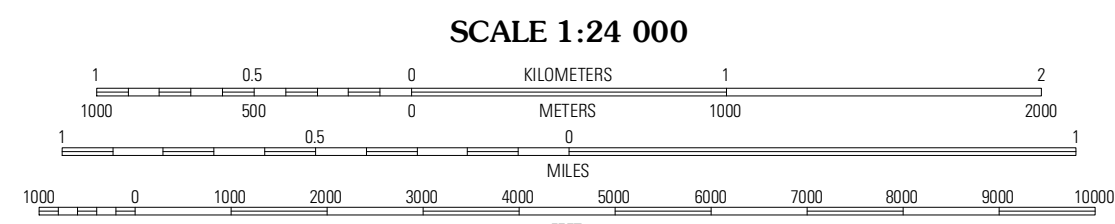
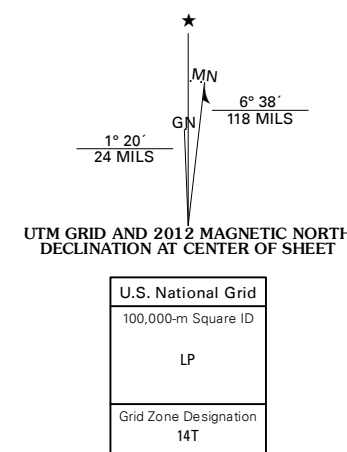


SOLDIER CREEK NW QUADRANGLE
SOUTH DAKOTA
7.5-MINUTE SERIES



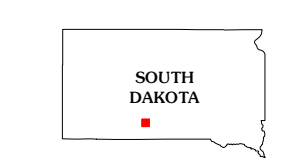
Produced by the United States Geological Survey
North American Datum of 1983 (NAD83)
World Geodetic System of 1984 (WGS84). Projection and
1 000-meter grid: Universal Transverse Mercator, Zone 14T
10 000-foot ticks: South Dakota Coordinate System of 1983
(south zone)

Imagery.....NAIP, July 2010
Names.....©2006-2011 TomTom
Hydrography.....CNIS, 2011
Contours.....National Hydrography Dataset, 2010
Boundaries.....Census, IBWC, B.C., USGS, 1972 - 2010



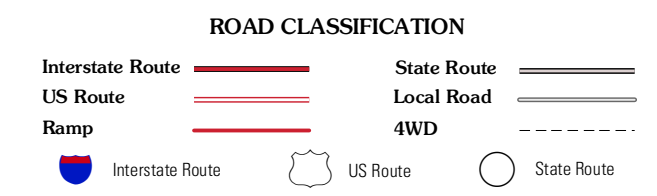
CONTOUR INTERVAL 20 FEET
NORTH AMERICAN VERTICAL DATUM OF 1988

This map was produced to conform with the
National Geospatial Program US Topo Product Standard, 2011.
A metadata file associated with this product is draft version 0.6.3



QUADRANGLE LOCATION

Cedar Butte	Nelson Ranch	White River West
Parmelee NE	Soldier Creek NW	Soldier Creek NE
Parmelee	Soldier Creek	Soldier Creek SE



SOLDIER CREEK NW, SD
2012

ADJOINING 7.5 QUADRANGLES