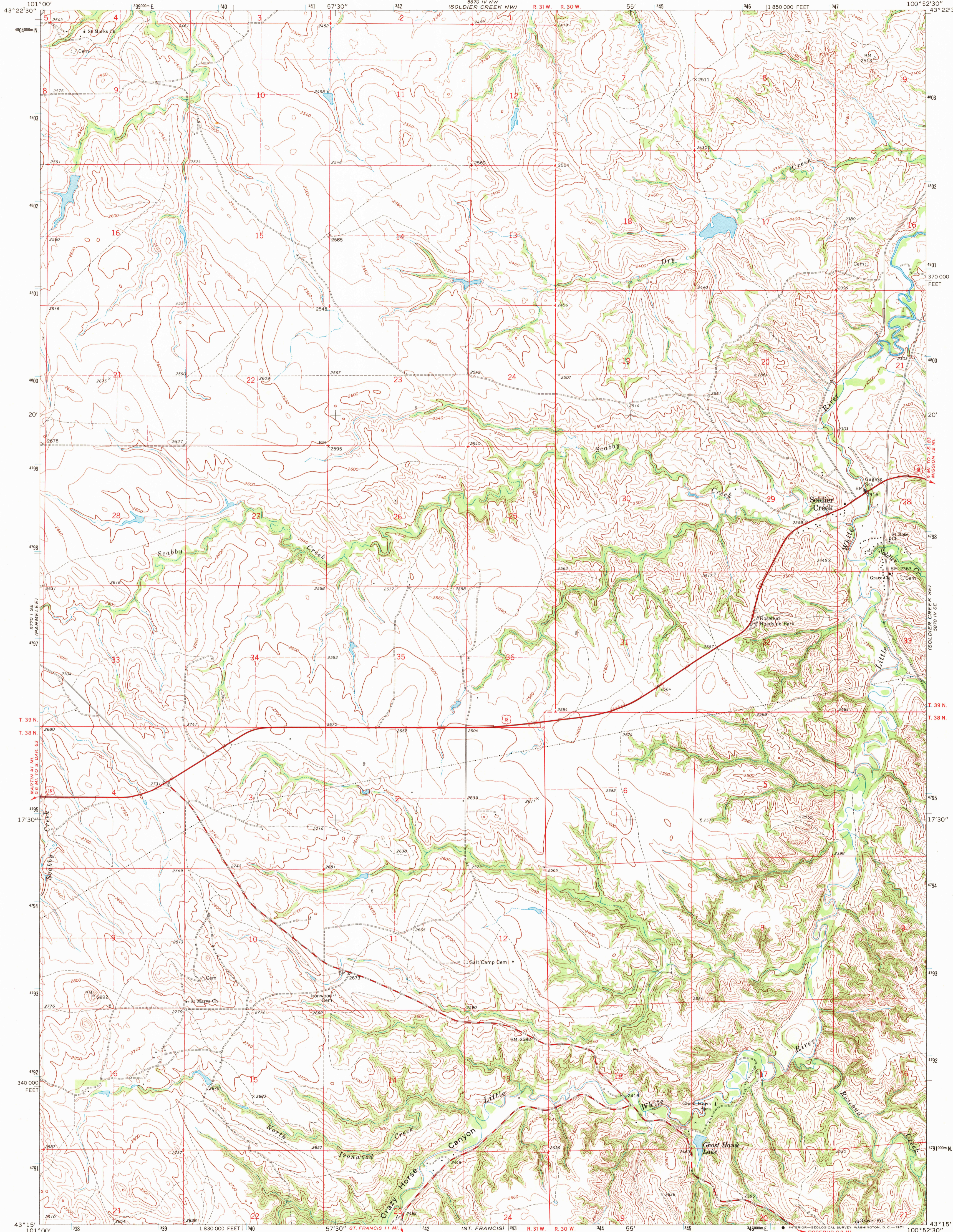


UNITED STATES
DEPARTMENT OF THE INTERIOR
GEOLOGICAL SURVEY

SOLDIER CREEK QUADRANGLE
SOUTH DAKOTA—TODD CO.
7.5 MINUTE SERIES (TOPOGRAPHIC)

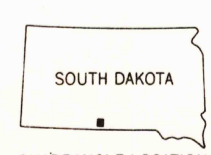
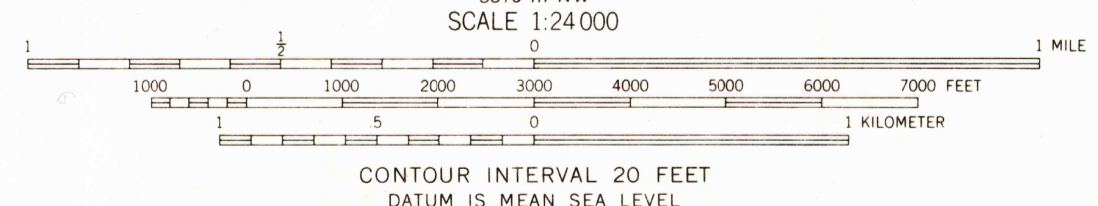
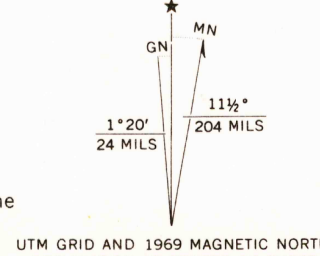


Mapped, edited, and published by the Geological Survey as part of the Department of the Interior program for the development of the Missouri River Basin

Control by USGS and USC&GS
Topography by photogrammetric methods from aerial photographs taken 1966. Field checked 1969

Polyconic projection. 1927 North American datum 10,000-foot grid based on South Dakota coordinate system, south zone 1000-meter Universal Transverse Mercator grid ticks, zone 14, shown in blue

Entire area lies within the Rosebud Indian Reservation
Fine red dashed lines indicate selected fence and field lines where generally visible on aerial photographs. This information is unchecked



ROAD CLASSIFICATION

Primary highway, all weather, hard surface	Light-duty road, all weather, improved surface
Secondary highway, all weather, hard surface	Unimproved road, fair or dry weather
	U. S. Route

THIS MAP COMPLIES WITH NATIONAL MAP ACCURACY STANDARDS
FOR SALE BY U. S. GEOLOGICAL SURVEY, DENVER, COLORADO 80225, OR WASHINGTON, D. C. 20242
A FOLDER DESCRIBING TOPOGRAPHIC MAPS AND SYMBOLS IS AVAILABLE ON REQUEST

SOLDIER CREEK, S. DAK.
N4315—W10052.5/7.5

1969
AMS 5870 IV SW—SERIES V873

AUG 4 1977
USGS HISTORICAL FILE TOPOGRAPHIC DIVISION

2200