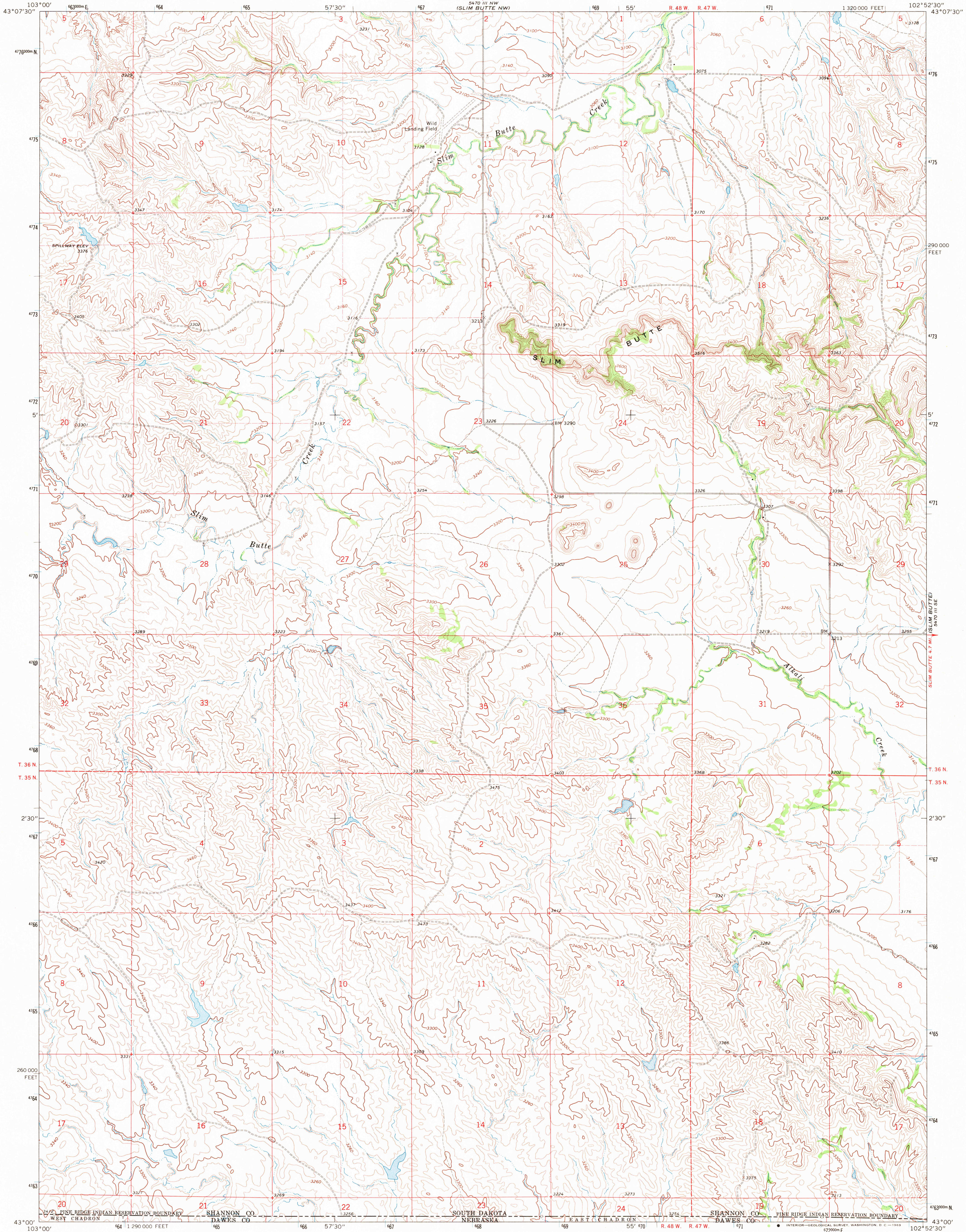
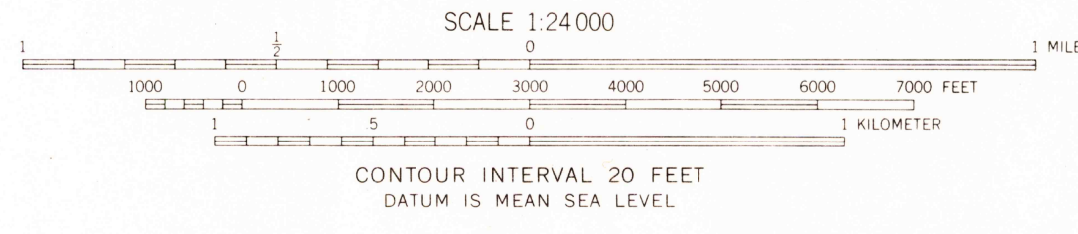
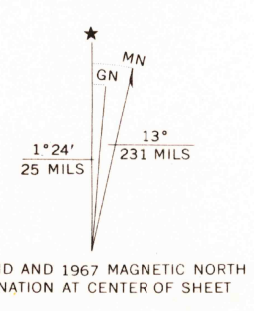


5470 III SW
(SLIM BUTTE NE)

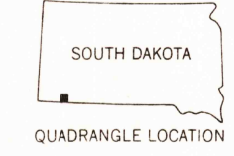


Mapped, edited, and published by the Geological Survey as part of the Department of the Interior program for the development of the Missouri River Basin. Control by USGS and USC&GS. Topography by photogrammetric methods from aerial photographs taken 1966. Field checked 1967. Polyconic projection. 1927 North American datum. 10,000-foot grid based on South Dakota coordinate system, south zone 1000-meter Universal Transverse Mercator grid ticks, zone 13, shown in blue. Fine red dashed lines indicate selected fence and field lines where generally visible on aerial photographs. This information is unchecked.



USGS
HISTORICAL FILE
TOPOGRAPHIC DIVISION

ROAD CLASSIFICATION
Light-duty ————— Unimproved dirt - - - - -



THIS MAP COMPLIES WITH NATIONAL MAP ACCURACY STANDARDS
FOR SALE BY U.S. GEOLOGICAL SURVEY, DENVER, COLORADO 80225, OR WASHINGTON, D.C. 20542
A FOLDER DESCRIBING TOPOGRAPHIC MAPS AND SYMBOLS IS AVAILABLE ON REQUEST

SLIM BUTTE SW, S. DAK. - NEBR.
N4300-W10252.5/7.5

1967

AMS 5470 III SW-SERIES V873

1270
MAR 26 1970