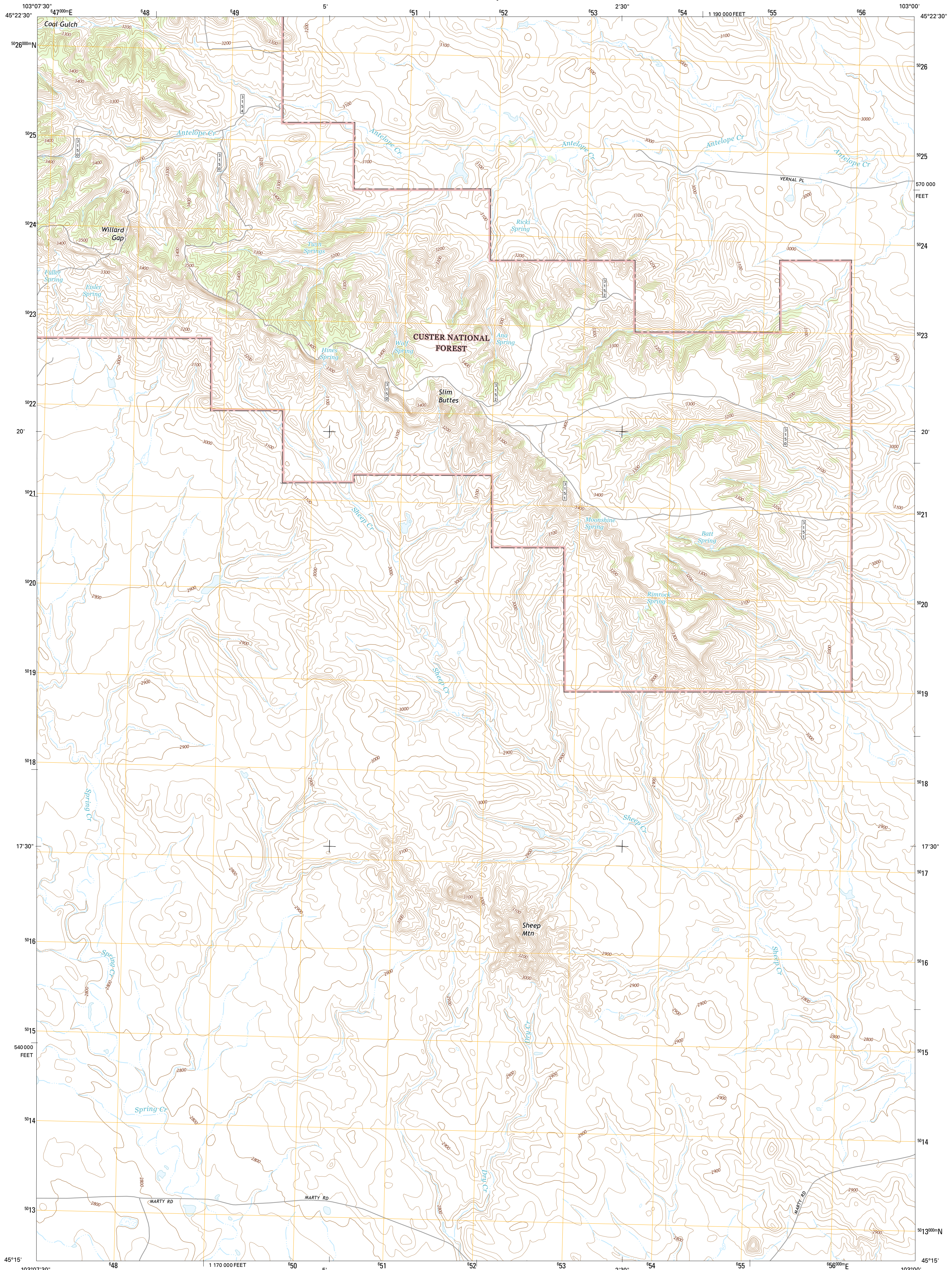




U.S. DEPARTMENT OF THE INTERIOR
U.S. GEOLOGICAL SURVEY



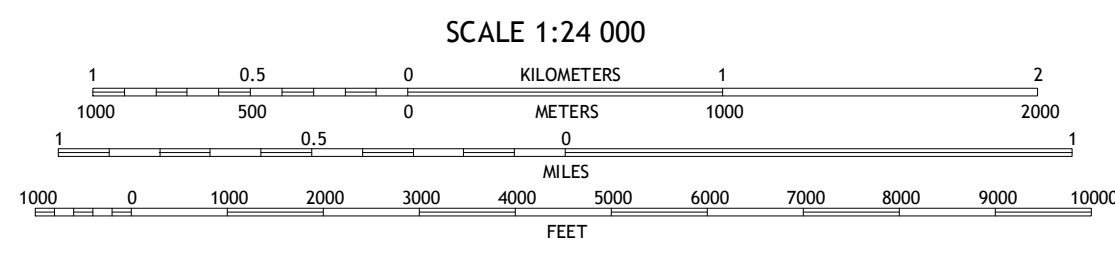
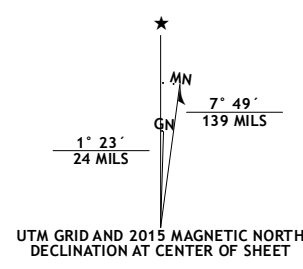
SHEEP MOUNTAIN QUADRANGLE
SOUTH DAKOTA-HARDING CO.
7.5-MINUTE SERIES



Produced by the United States Geological Survey
North American Datum of 1983 (NAD83)
World Geodetic System of 1984 (WGS84). Projection and
1 000-meter grid: Universal Transverse Mercator, Zone 13T
10 000-foot ticks: South Dakota Coordinate System of 1983
(north zone)

This map is not a legal document. Boundaries may be
generalized for this map scale. Private lands within government
reservations may not be shown. Obtain permission before
entering private lands.

Imagery.....NAP, August 2014
Roads.....HERE, ©2013 - 2014
Roads within US Forest Service Lands.....FSTopo Data
with limited Forest Service updates, 2012 - 2015
Names.....GNIS, 2015
Hydrography.....National Hydrography Dataset, 2014
Contours.....National Elevation Dataset, 2012
Boundaries.....Multiple sources; see metadata file 1972 - 2015
Public Land Survey System.....BLM, 2015



ROAD CLASSIFICATION

Expressway	Local Connector
Secondary Hwy	Local Road
Ramp	4WD
Interstate Route	US Route
FS Primary Route	FS Passenger Route
	FS High Clearance Route
	State Route

Check with local Forest Service unit for current travel conditions and restrictions.

ADJOINING QUADRANGLES

1	2	3
4	5	6
7	8	

1 J B Hill
2 Flat Top Butte
3 Sorum
4 Irish Butte
5 Sorum SW
6 Porter Creek
7 Fish Draw
8 Zeona

SHEEP MOUNTAIN, SD
2015

