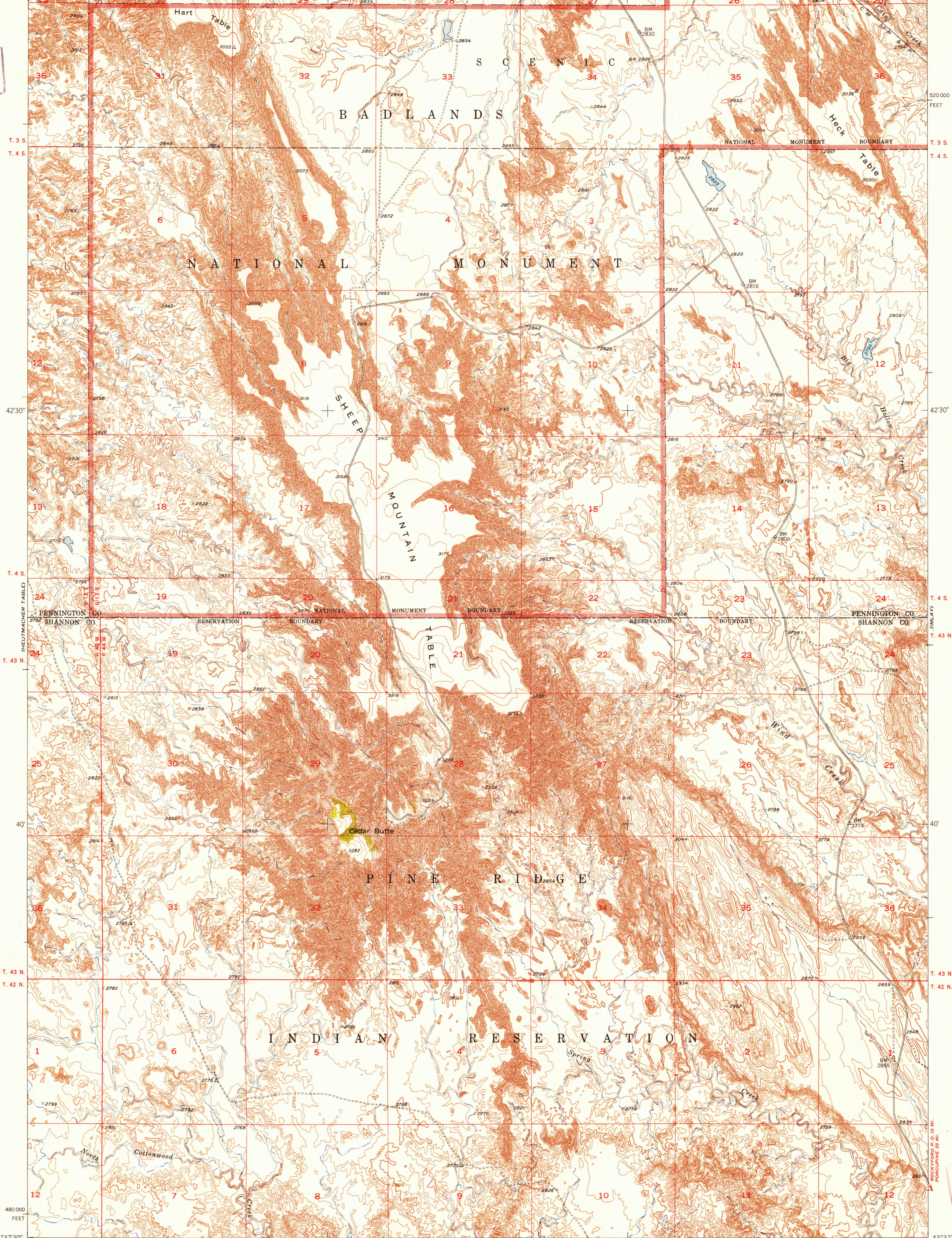


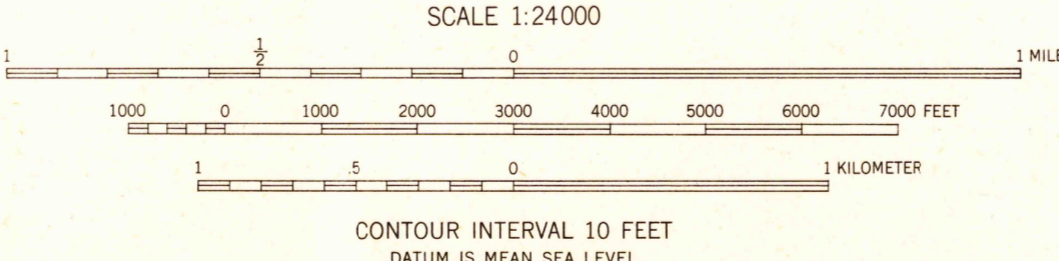
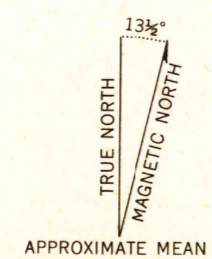
102°37'30" 43°45' R. 12 E. R. 13 E. 35' 28' 27' 26' 1:420 000 FEET 25' 24' 23' 22' 21' 20' 19' 18' 17' 16' 15' 14' 13' 12' 11' 10' 9' 8' 7' 6' 5' 4' 3' 2' 1' 102°30' 43°45'

U.S.G.S.
FILE COPY
Inspection and Printing



43°37'30" 102°37'30" R. 45 W. R. 44 W. 1:400 000 FEET (STIRK TABLE) 35' 32'30" 32'30" INTERIOR-GEOLOGICAL SURVEY, WASHINGTON, D. C. 1952 102°30' 43°37'30"

Mapped, edited, and published by the Geological Survey as part of the Department of the Interior program for the development of the Missouri River Basin. Control by USGS and USC&GS. Topography from aerial photographs by multiplex methods. Aerial photographs taken 1949. Field check 1950. Polyconic projection. 1927 North American datum. 10,000-foot grid based on South Dakota coordinate system, south zone. Unchecked elevations are shown in brown.



USGS
HISTORICAL FILE
TOPOGRAPHIC DIVISION

ROAD CLASSIFICATION

Heavy-duty	4 LANE 16 LANE	Light-duty
Medium-duty	4 LANE 16 LANE	Unimproved dirt

U. S. Route (square symbol) State Route (circle symbol)

SHEEP MOUNTAIN TABLE, S. DAK.
N4337.5-W10230/7.5
1950

U.S.G.S.
FILE COPY
Inspection and Printing