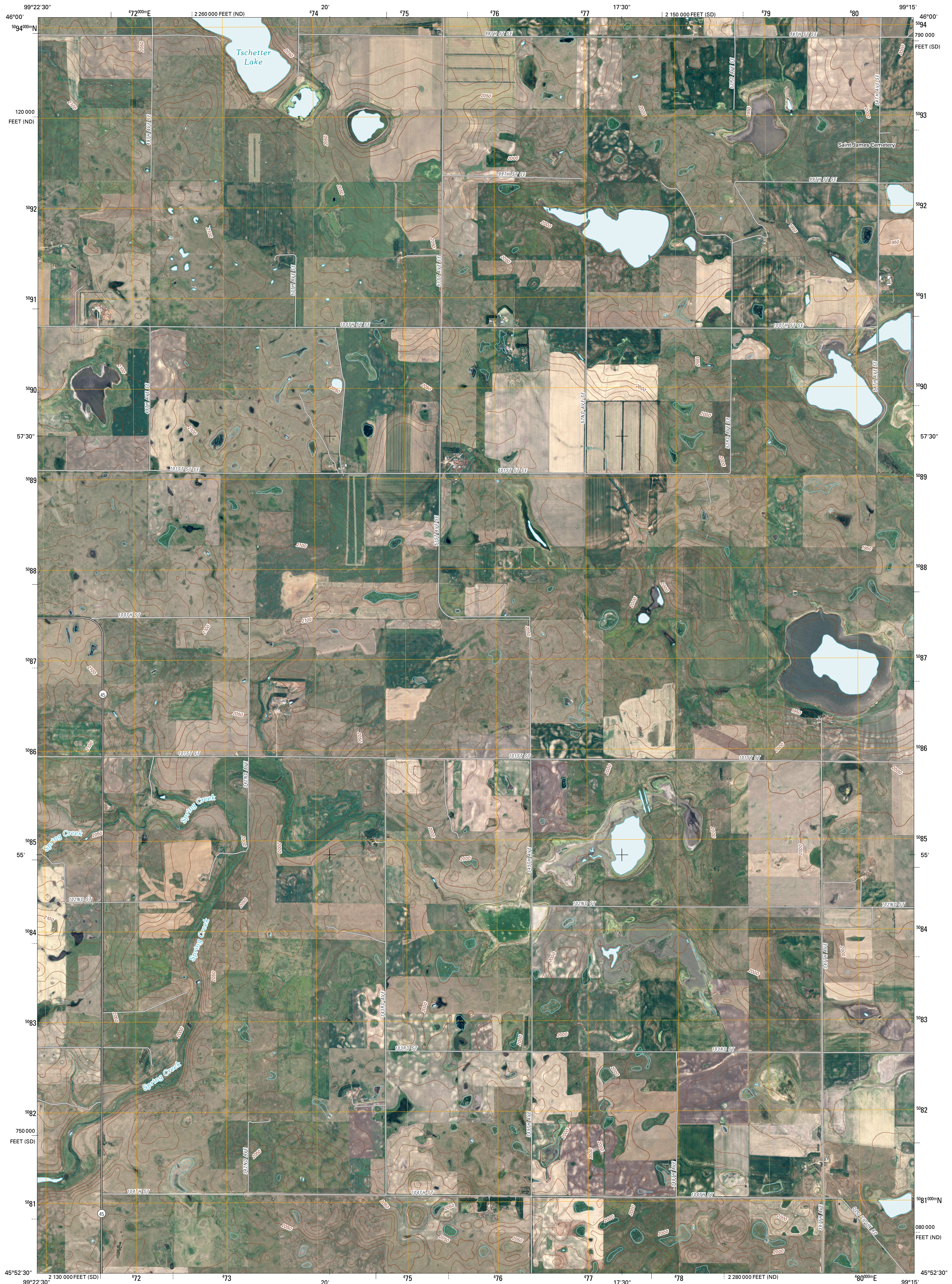




U.S. DEPARTMENT OF THE INTERIOR
U. S. GEOLOGICAL SURVEY

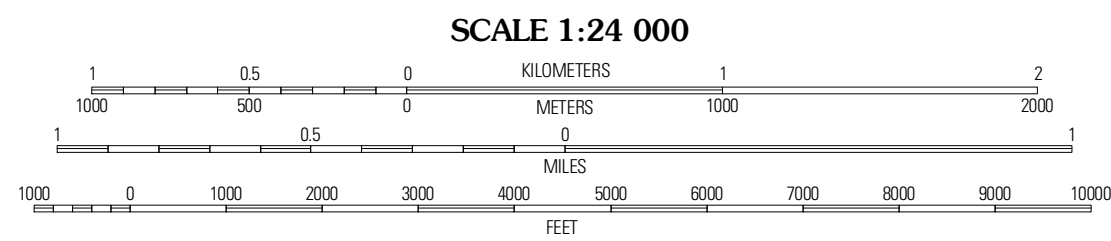
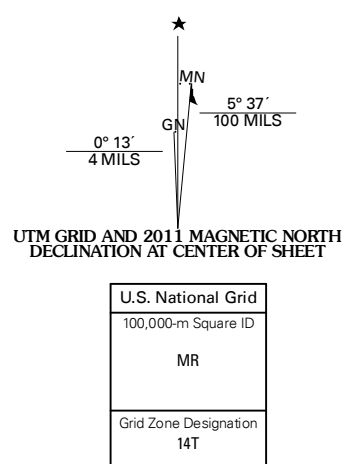


SCHUMACHER LAKE NE QUADRANGLE
SOUTH DAKOTA-NORTH DAKOTA
7.5-MINUTE SERIES

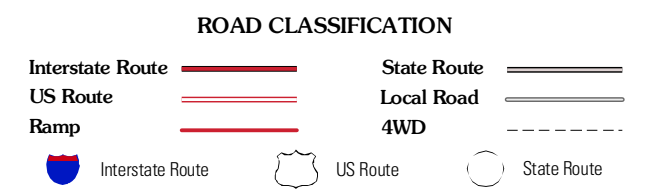
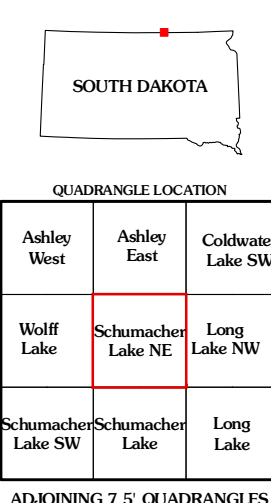


Produced by the United States Geological Survey
North American Datum of 1983 (NAD83)
World Geodetic System of 1984 (WGS84). Projection and
1 000-meter grid: Universal Transverse Mercator, Zone 14T
10 000-foot ticks: South Dakota Coordinate System of 1983
(north zone) and North Dakota Coordinate System of 1983
(south zone)

Imagery:.....NAIP, July 2008
Roads:.....62006-2010 T4c Atlas
Names:.....GNIS, 2009
Hydrography:.....National Hydrography Dataset, 2008
Contours:.....National Elevation Dataset, 2009



CONTOUR INTERVAL 10 FEET
NORTH AMERICAN VERTICAL DATUM OF 1988
This map was produced to conform with version 0.5.10 of the
draft USGS Standards for 7.5-Minute Quadrangle Maps.
A metadata file associated with this product is draft version 0.5.11



SCHUMACHER LAKE NE, SD-ND
2011