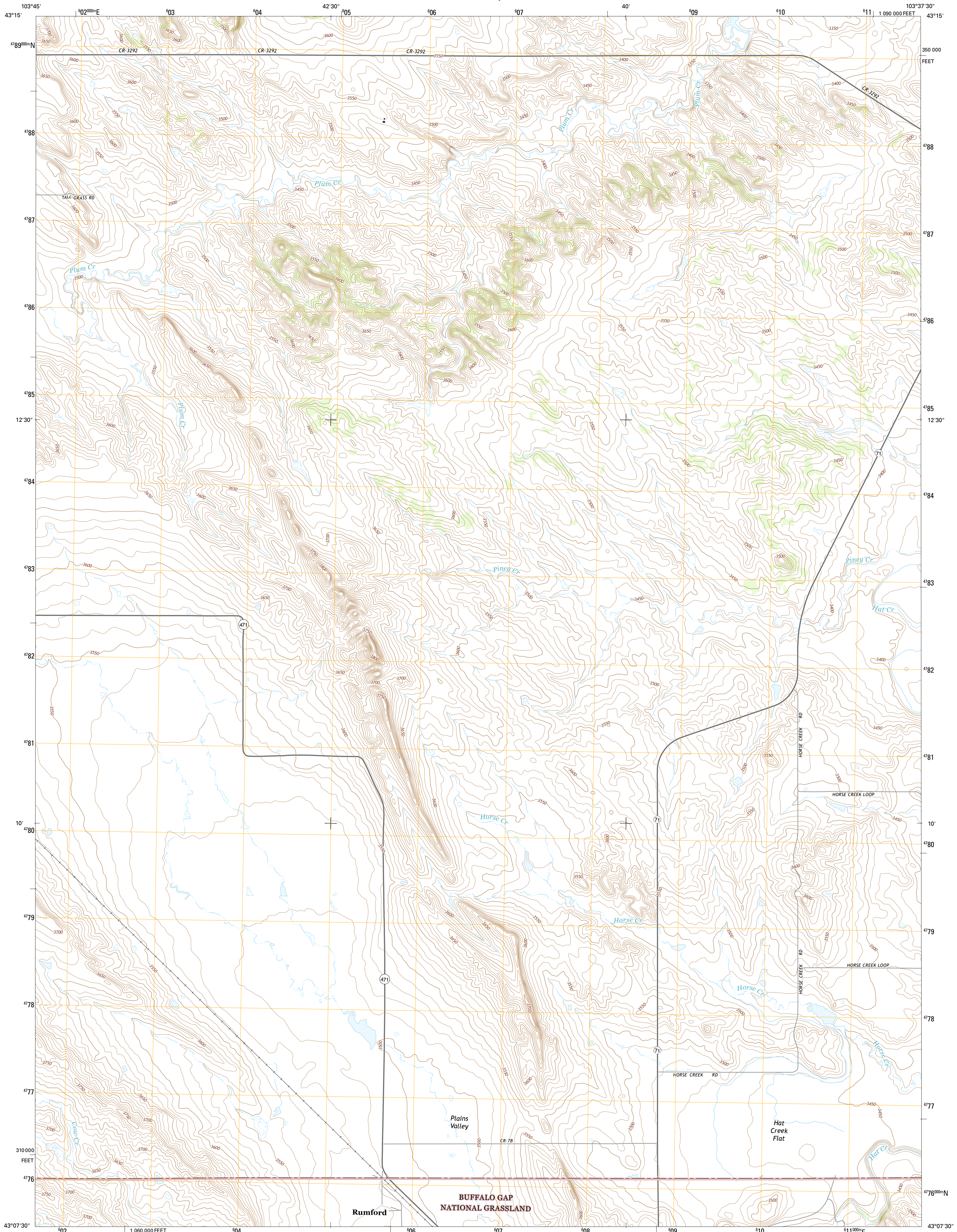




U.S. DEPARTMENT OF THE INTERIOR
U.S. GEOLOGICAL SURVEY



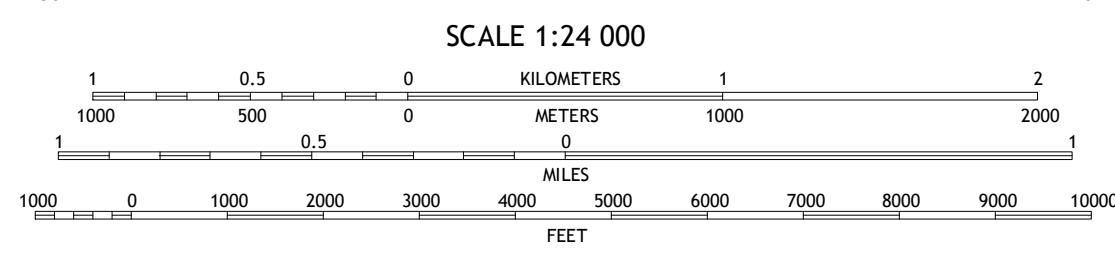
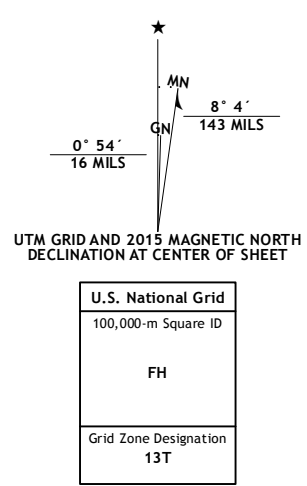
RUMFORD QUADRANGLE
SOUTH DAKOTA-FALL RIVER CO.
7.5-MINUTE SERIES



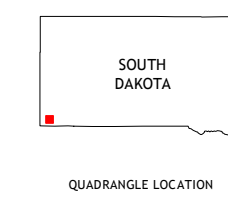
Produced by the United States Geological Survey
North American Datum of 1983 (NAD83)
World Geodetic System of 1984 (WGS84). Projection and
1 000-meter grid: Universal Transverse Mercator, Zone 13T
10 000-foot ticks: South Dakota Coordinate System of 1983
(south zone)

This map is not a legal document. Boundaries may be
generalized for this map scale. Private lands within government
reservations may not be shown. Obtain permission before
entering private lands.

Imagery: N.A.I.P., September 2014
Roads: HERE, ©2013 - 2014
Roads within US Forest Service Lands: FSTopo Data
with limited Forest Service updates, 2012 - 2015
Names: GNS, 2015
Hydrography: National Hydrography Dataset, 2014
Contours: National Elevation Dataset, 2005
Boundaries: Multiple sources; see metadata file 1972 - 2015
Public Land Survey System: BLM, 2015



CONTOUR INTERVAL 10 FEET
NORTH AMERICAN VERTICAL DATUM OF 1988
This map was produced to conform with the
National Geospatial Program US Topo Product Standard, 2011.
A metadata file associated with this product is draft version 0.6.18



QUADRANGLE LOCATION

ROAD CLASSIFICATION	
Expressway	Local Connector
Secondary Hwy	Local Road
Ramp	4WD
Interstate Route	US Route
FS Primary Route	FS Passenger Route
	FS High Clearance Route

Check with Local Forest Service unit
for current travel conditions and restrictions.

1	2	3
4	5	6
7	8	

RUMFORD, SD
2015

