

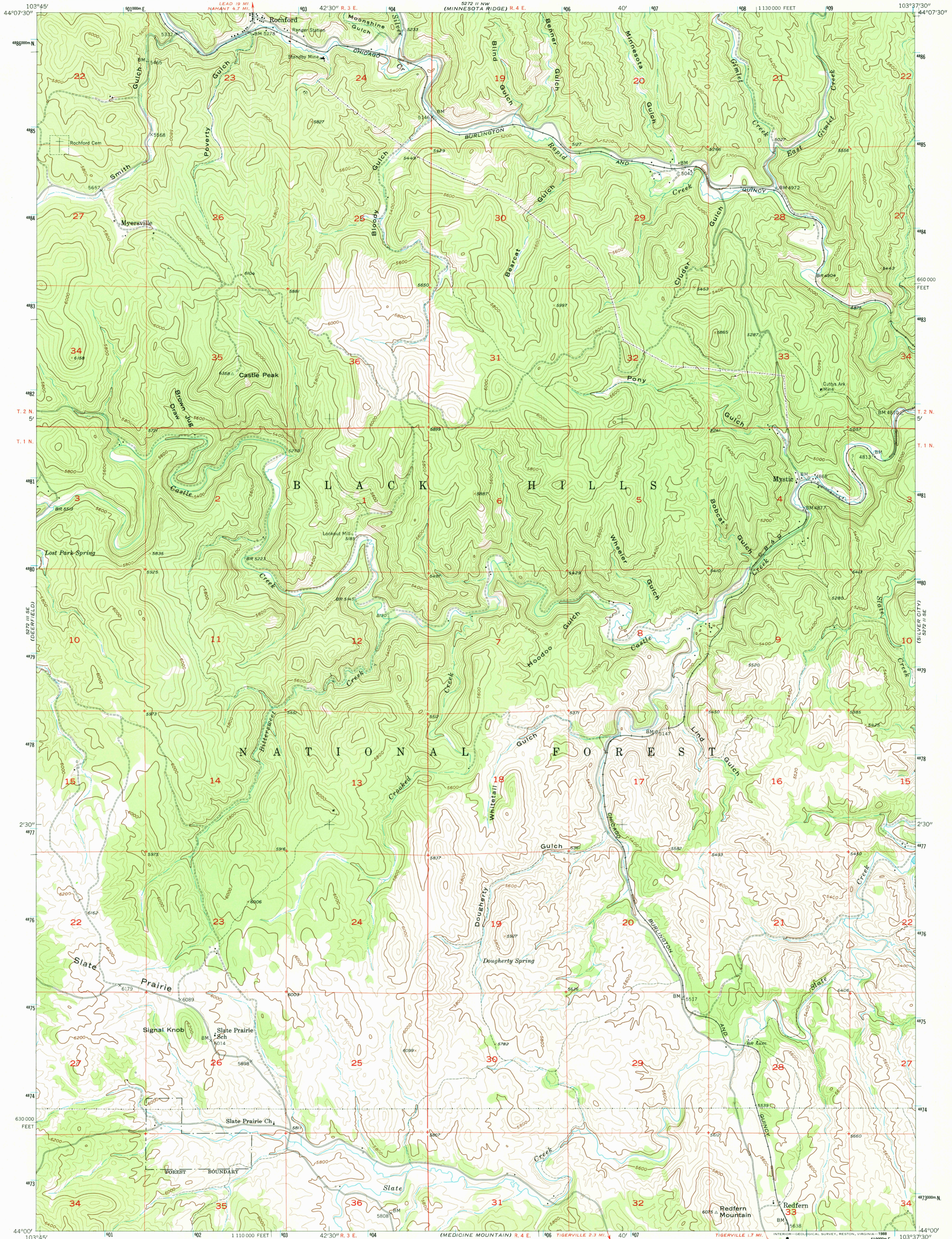
5272 II NE (MAY 1954)

UNITED STATES  
DEPARTMENT OF THE INTERIOR  
GEOLOGICAL SURVEY

UNITED STATES  
ATOMIC ENERGY COMMISSION

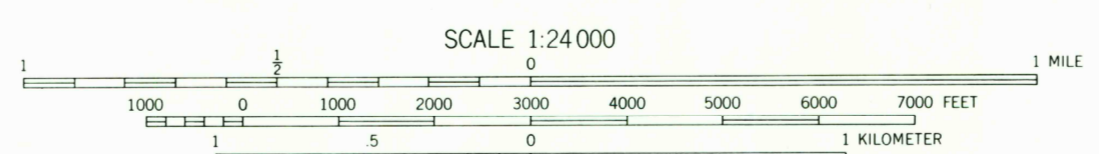
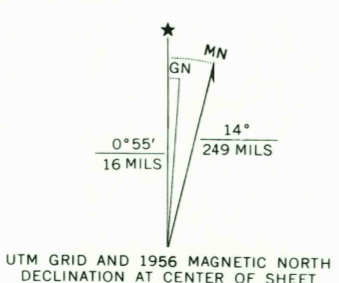
ROCHFORD QUADRANGLE  
SOUTH DAKOTA—PENNINGTON CO.  
7.5 MINUTE SERIES (TOPOGRAPHIC)

5272 II NE (MEMO)



Mapped, edited, and published by the Geological Survey

Control by USGS and USC&GS  
 Topography from photographs by multiplex methods  
 Aerial photographs taken 1954. Field check 1956  
 Polyconic projection. 1927 North American datum  
 10,000-foot grid based on South Dakota coordinate system,  
 south zone  
 1000-meter Universal Transverse Mercator grid ticks,  
 zone 13, shown in blue  
 To place on the predicted North American Datum 1983  
 move the projection lines 6 meters north and  
 42 meters east as shown by dashed corner ticks  
 Map photoinspected 1977  
 No major culture or drainage changes observed



CONTOUR INTERVAL 40 FEET  
NATIONAL GEODETIC VERTICAL DATUM OF 1929



ROAD CLASSIFICATION  
 Light duty ——— Unimproved dirt - - - - -

THIS MAP COMPLIES WITH NATIONAL MAP ACCURACY STANDARDS  
 FOR SALE BY U. S. GEOLOGICAL SURVEY, DENVER, COLORADO 80225, OR RESTON, VIRGINIA 22092  
 A FOLDER DESCRIBING TOPOGRAPHIC MAPS AND SYMBOLS IS AVAILABLE ON REQUEST

ROCHFORD, S. DAK.  
 44103-A6-TF-024

1956  
 PHOTOINSPECTED 1977  
 DMA 5272 II SW—SERIES V873

USGS HISTORICAL MAP  
 AUG 02 1988  
 REC'D FILE COPY