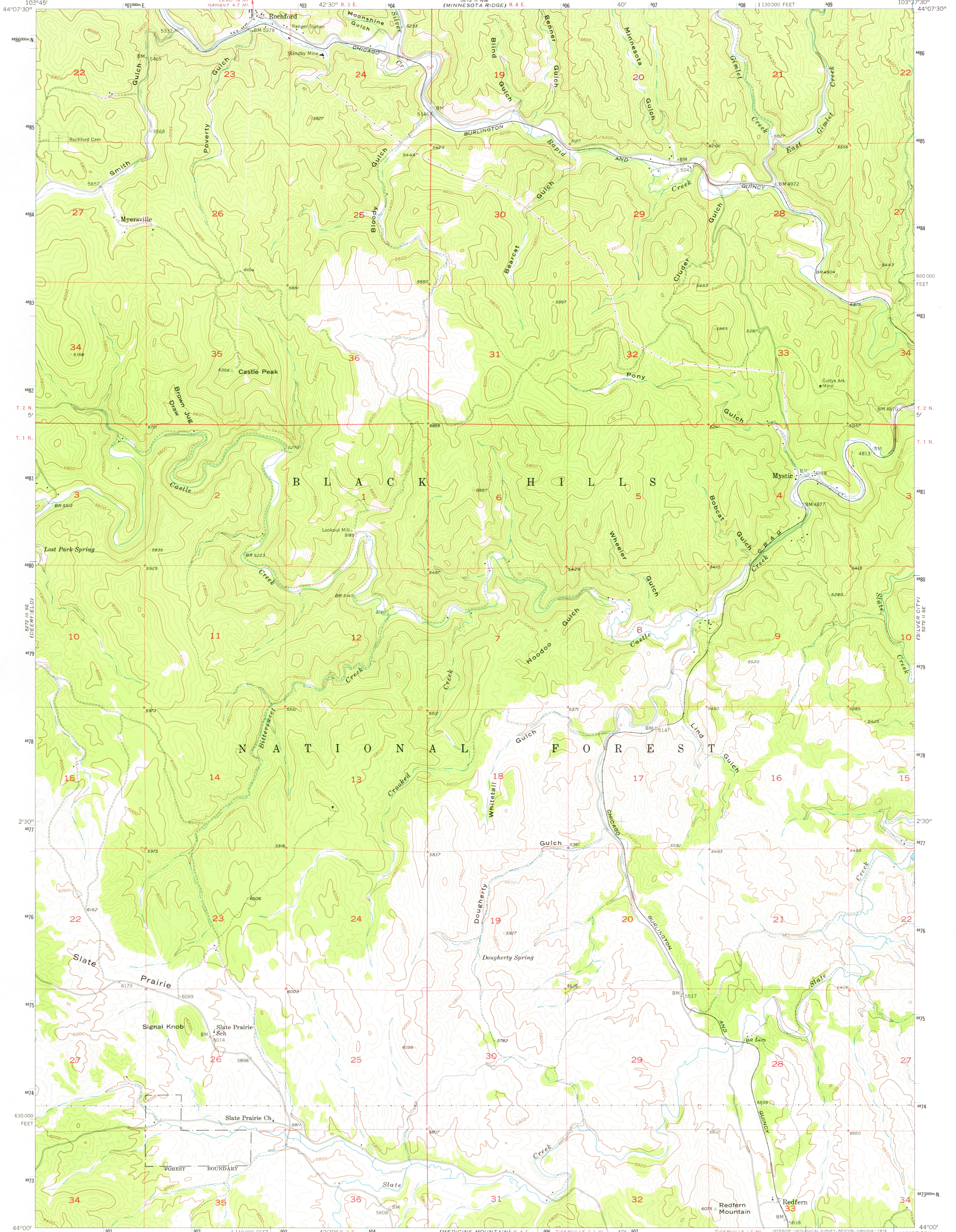


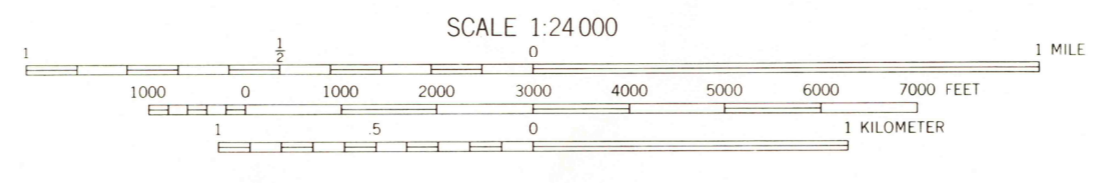
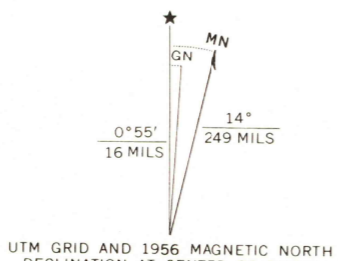
5272 II NW
(NAHANT) R. 3 E.

5272 II NW
(MINNESOTA RIDGE) R. 4 E.



Mapped, edited, and published by the Geological Survey

Control by USGS and USCGS
Topography from photographs by multiplex methods
Aerial photographs taken 1954. Field check 1956
Polyconic projection. 1927 North American datum
10,000-foot grid based on South Dakota coordinate system,
south zone
1000-meter Universal Transverse Mercator grid ticks,
zone 13, shown in blue



CONTOUR INTERVAL 40 FEET
DATUM IS MEAN SEA LEVEL



ROAD CLASSIFICATION
Light-duty ——— Unimproved dirt - - - - -

THIS MAP COMPLIES WITH NATIONAL MAP ACCURACY STANDARDS
FOR SALE BY U.S. GEOLOGICAL SURVEY, DENVER, COLORADO 80225, OR RESTON, VIRGINIA 22092
A FOLDER DESCRIBING TOPOGRAPHIC MAPS AND SYMBOLS IS AVAILABLE ON REQUEST

USGS
Historical File
Topographic Division

ROCHFORD, S. DAK.
N 4400—W 10337.5/7.5
1956
AMS 5272 II SW—SERIES V873

3300

DEC 23 1976