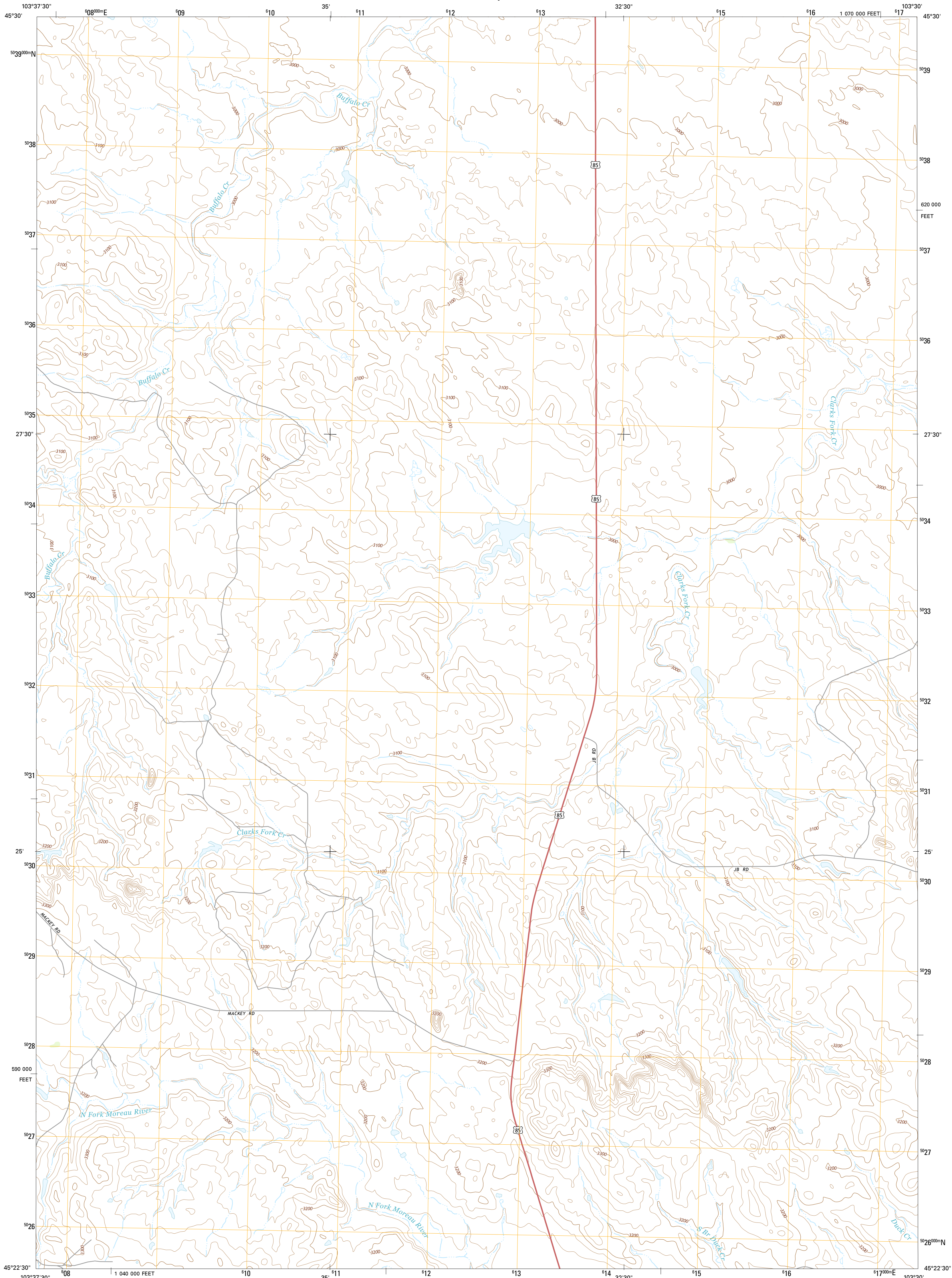




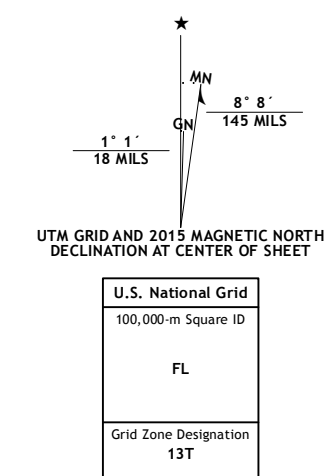
U.S. DEPARTMENT OF THE INTERIOR  
U.S. GEOLOGICAL SURVEY



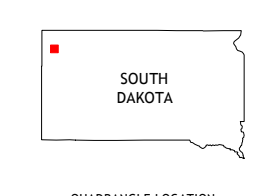
REDIG NE QUADRANGLE  
SOUTH DAKOTA-HARDING CO.  
7.5-MINUTE SERIES



**Produced by the United States Geological Survey**  
 North American Datum of 1983 (NAD83)  
 World Geodetic System of 1984 (WGS84), Projection and  
 1 000-meter grid: Universal Transverse Mercator, Zone 13T  
 10 000-foot ticks: South Dakota Coordinate System of 1983  
 (north zone)  
 This map is not a legal document. Boundaries may be  
 generalized for this map scale. Private lands within government  
 reservations may not be shown. Obtain permission before  
 entering private lands.  
 Imagery:.....N.A.I.P., September 2014  
 Roads:.....HERE, ©2013 - 2014  
 Names:.....GNIS, 2015  
 Hydrography:.....National Hydrography Dataset, 2014  
 Contours:.....National Elevation Dataset, 2012  
 Boundaries:.....Multiple sources; see metadata file 1972 - 2015  
 Public Land Survey System:.....BLM, 2015



SCALE 1:24 000  
 CONTOUR INTERVAL 20 FEET  
 NORTH AMERICAN VERTICAL DATUM OF 1988  
 This map was produced to conform with the  
 National Geospatial Program US Topo Product Standard, 2011.  
 A metadata file associated with this product is draft version 0.6.18



**ROAD CLASSIFICATION**

Expressway	Local Connector
Secondary Hwy	Local Road
Ramp	4WP
Interstate Route	US Route
	State Route

ADJOINING QUADRANGLES

1	2	3
4	5	6
7	8	

1 Saddle Butte  
 2 Buffalo  
 3 Sheep Pen Draw SW  
 4 Big Creek  
 5 Bams Butte NW  
 6 Moreau Peak  
 7 Redig  
 8 Roundup Butte



REDIG NE, SD  
2015