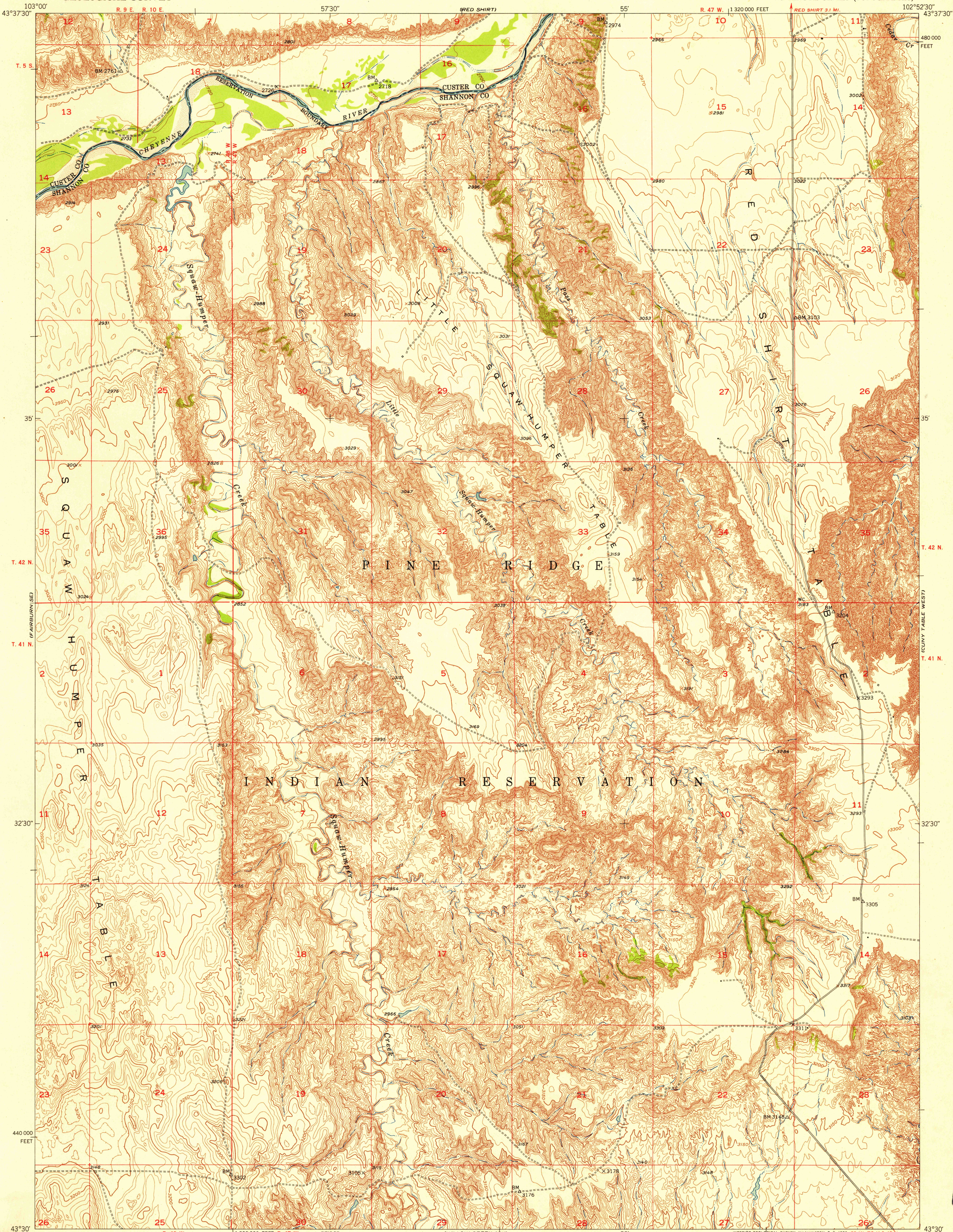
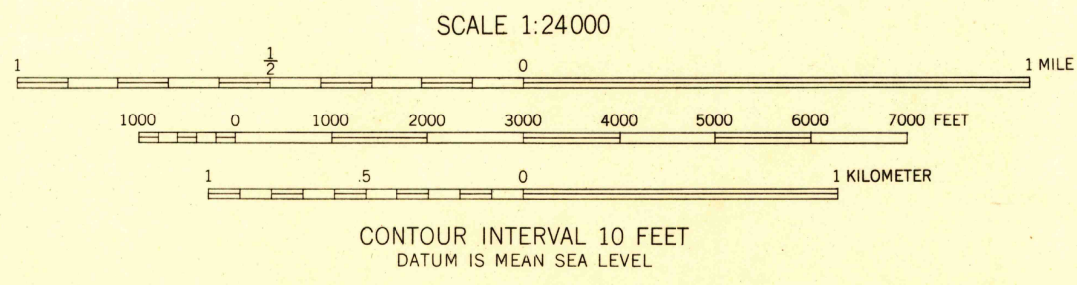
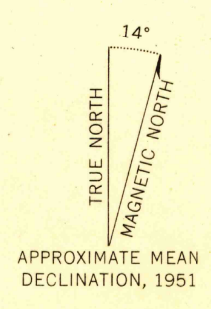


U.S.G.S.
FILE COPY
Inquiries and Orders



U.S.G.S.
FILE COPY
Inquiries and Orders

Mapped, edited, and published by the Geological Survey as part of the Department of the Interior program for the development of the Missouri River Basin. Control by USGS and USC&GS. Topography from aerial photographs by multiplex methods. Aerial photographs taken 1948. Field check 1951. Polyconic projection. 1927 North American datum. 10,000-foot grid based on South Dakota coordinate system, south zone.



USGS
HISTORICAL FILE
TOPOGRAPHIC DIVISION
SOUTH DAKOTA
QUADRANGLE LOCATION

ROAD CLASSIFICATION
Heavy-duty 4 LANE 16 LANE Light-duty
Medium-duty 4 LANE 16 LANE Unimproved dirt
U.S. Route State Route

RED SHIRT SW, S. DAK.
N4330-W10252.5/7.5
1951

THIS MAP COMPLIES WITH NATIONAL MAP ACCURACY STANDARDS
FOR SALE BY U.S. GEOLOGICAL SURVEY, FEDERAL CENTER, DENVER, COLORADO OR WASHINGTON 25, D. C.
A FOLDER DESCRIBING TOPOGRAPHIC MAPS AND SYMBOLS IS AVAILABLE ON REQUEST

NOV 3 1953