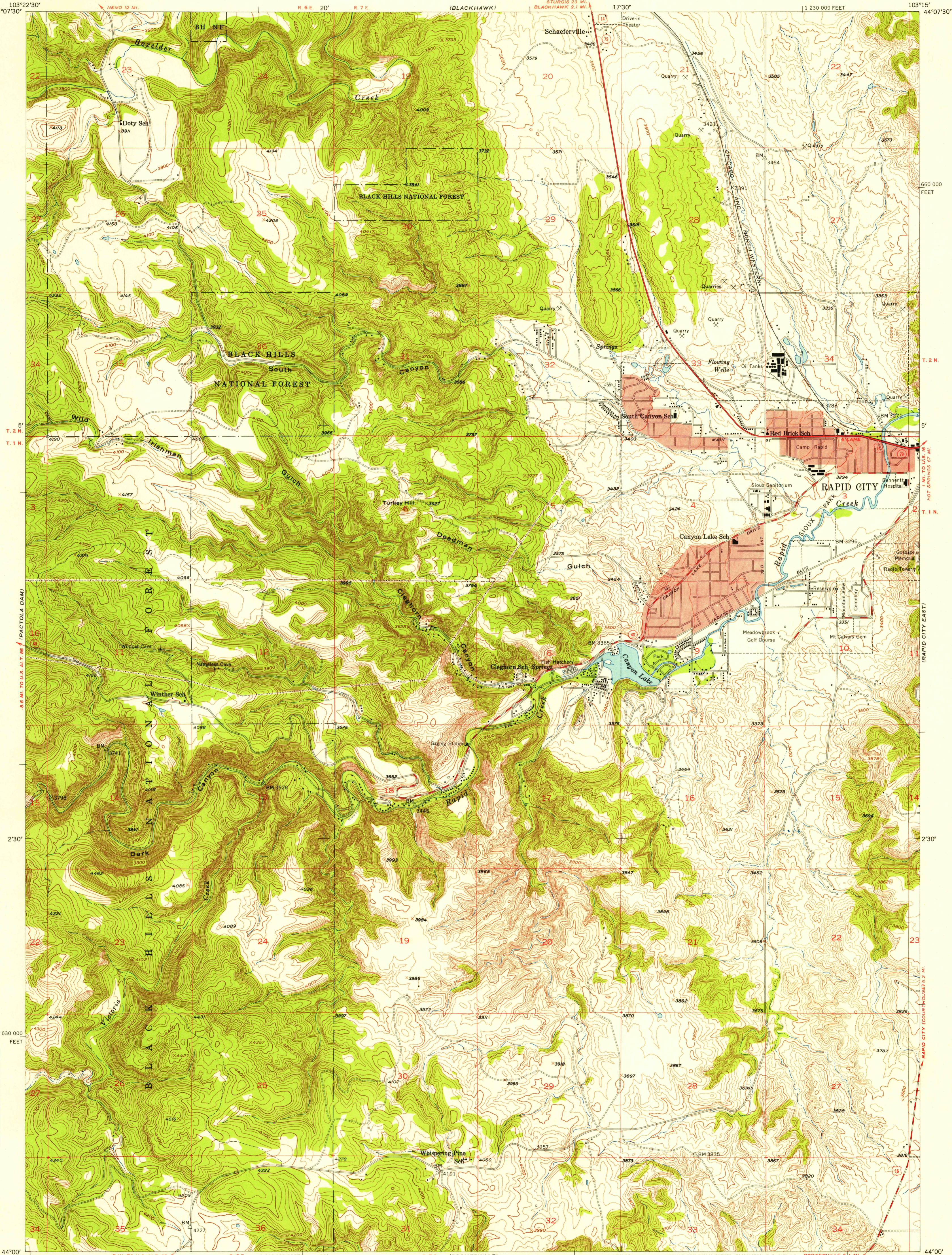
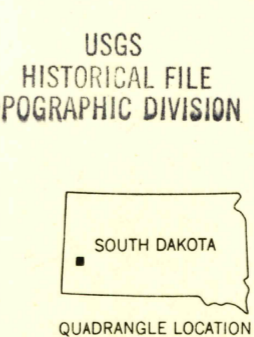
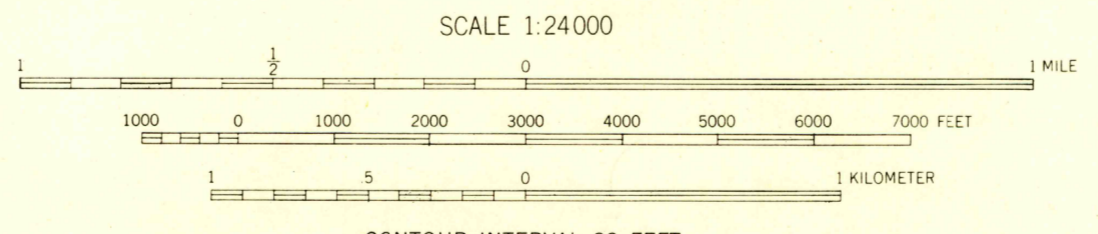
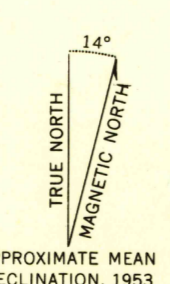


U.S.G.S.
FILE COPY
TOPOGRAPHIC DIVISION



Mapped, edited, and published by the Geological Survey
Control by USGS and USC&GS
Topography from aerial photographs by multiplex methods
Aerial photographs taken 1952. Field check 1953
Polyconic projection. 1927 North American datum
10,000-foot grid based on South Dakota coordinate system,
south zone
Red tint indicates areas in which only
landmark buildings are shown
Unchecked elevations are shown in brown



ROAD CLASSIFICATION

Heavy-duty	4 LANE 16 LANE	Light-duty
Medium-duty	4 LANE 16 LANE	Unimproved dirt

U. S. Route State Route

RAPID CITY WEST, S. DAK.
N4400-W10315/7.5

U.S.G.S.
FILE COPY
TOPOGRAPHIC DIVISION