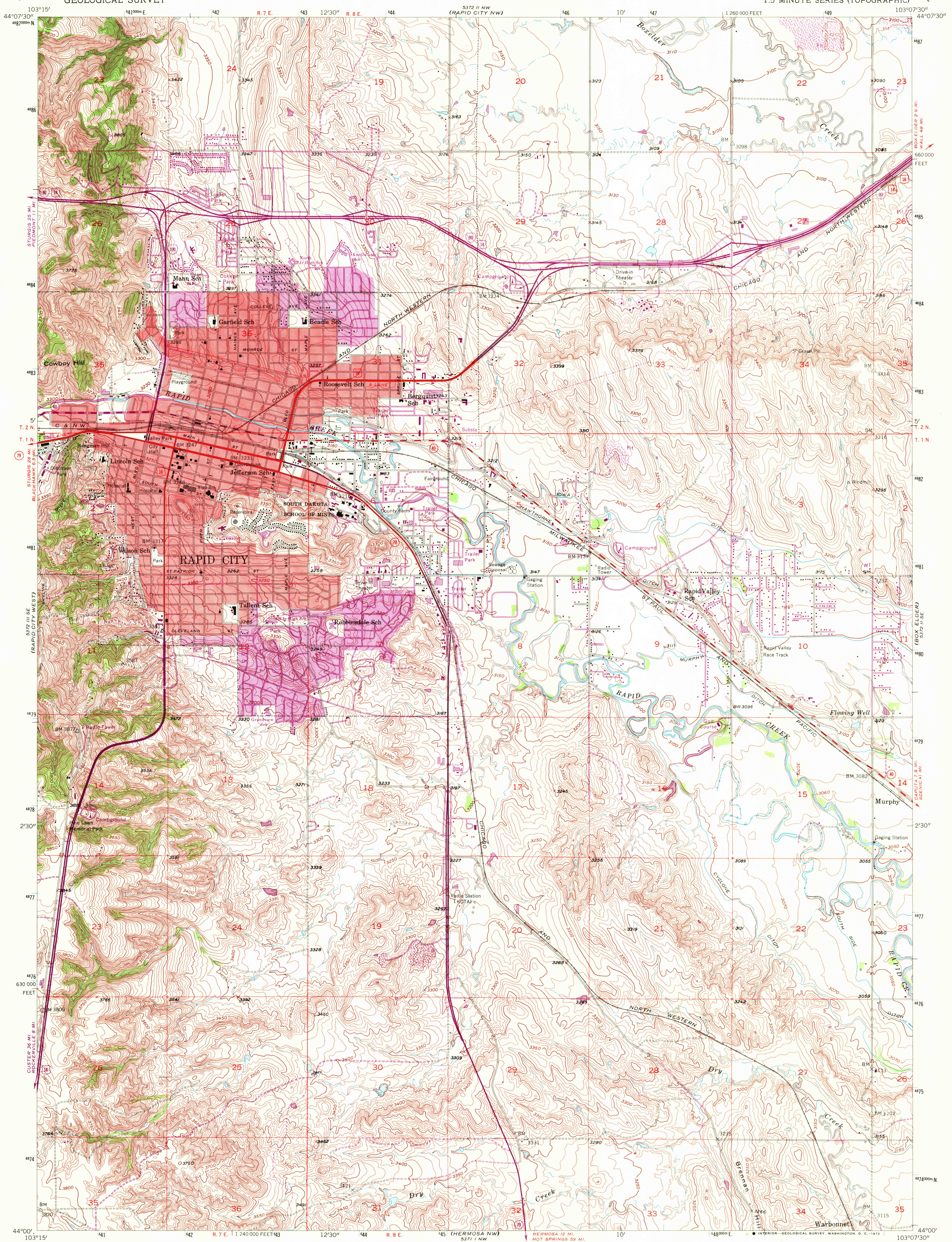
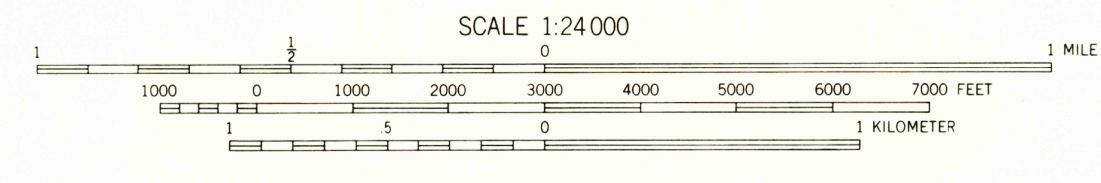
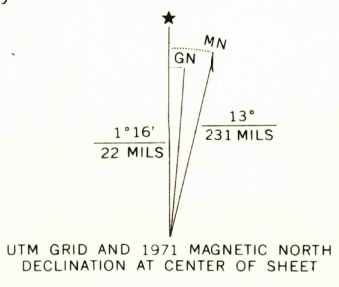


UNITED STATES
DEPARTMENT OF THE INTERIOR
GEOLOGICAL SURVEY

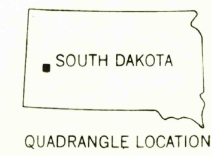
RAPID CITY EAST QUADRANGLE
SOUTH DAKOTA—PENNINGTON CO.
7.5 MINUTE SERIES (TOPOGRAPHIC)



Mapped, edited, and published by the Geological Survey
Control by USGS and USC&GS
Topography from aerial photographs by multiplex methods
Aerial photographs taken 1952. Field check 1953
Polyconic projection. 1927 North American datum
10,000-foot grid based on South Dakota coordinate system,
south zone
Red tint indicates areas in which only
landmark buildings are shown
1000-meter Universal Transverse Mercator grid ticks,
zone 13, shown in blue
Revisions shown in purple compiled from aerial photographs
taken 1971. This information not field checked
Purple tint indicates extension of urban areas



CONTOUR INTERVAL 10 FEET
DATUM IS MEAN SEA LEVEL



ROAD CLASSIFICATION

Heavy-duty	LANE/ELANE	Light-duty	LANE/ELANE
Medium-duty	LANE/ELANE	Unimproved dirt	LANE/ELANE
U.S. Route	(Symbol)	State Route	(Symbol)
Interstate Route	(Symbol)		

RAPID CITY EAST, S. DAK.
N 4400—W 10307.5/7.5

1953
PHOTOREVISED 1971
AMS 5372 II SW—SERIES V873

THIS MAP COMPLIES WITH NATIONAL MAP ACCURACY STANDARDS
FOR SALE BY U.S. GEOLOGICAL SURVEY, DENVER, COLORADO 80225, OR WASHINGTON, D. C. 20242
A FOLDER DESCRIBING TOPOGRAPHIC MAPS AND SYMBOLS IS AVAILABLE ON REQUEST

USGS
HISTORICAL FILE
TOPOGRAPHIC DIVISION

2505