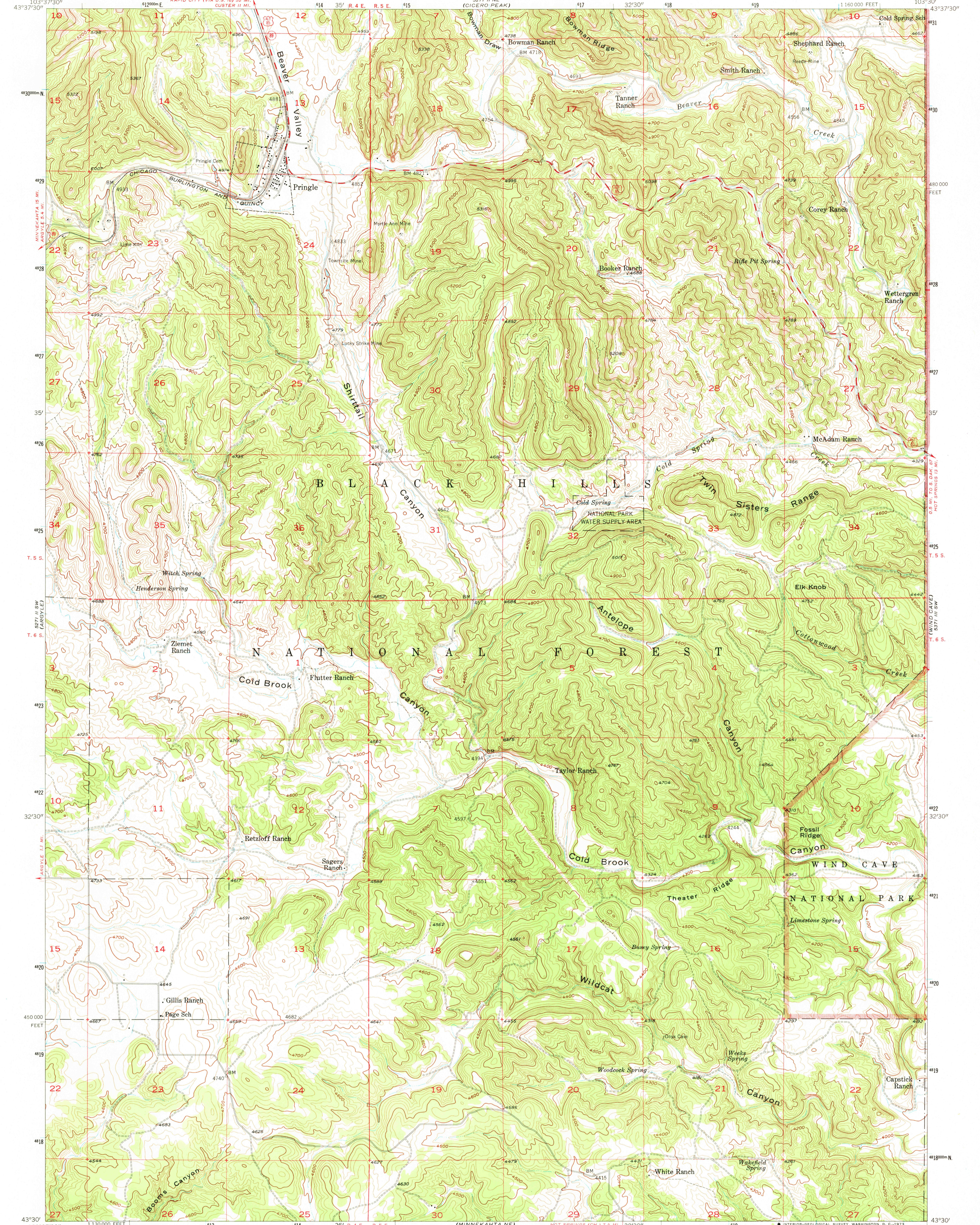
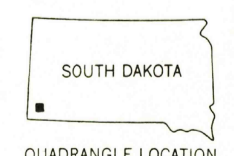
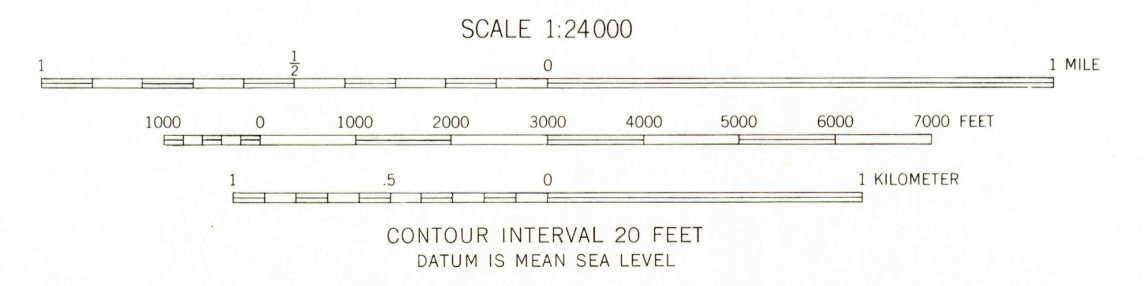
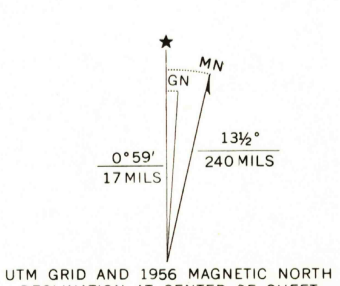


5271 II NE
(FOURMILES)

5271 II NW
(MT. COOLIDGE)



Mapped, edited, and published by the Geological Survey
Control by USGS and USC&GS
Topography from aerial photographs by multiplex methods
Aerial photographs taken 1954. Field check 1956
Polyconic projection. 1927 North American datum
10,000-foot grid based on South Dakota coordinate system,
south zone
1000-meter Universal Transverse Mercator grid ticks,
zone 13, shown in blue



ROAD CLASSIFICATION

Medium-duty	Light-duty
Unimproved dirt	
U.S. Route	State Route

PRINGLE, S. DAK.
SE/4 PRINGLE 15' QUADRANGLE
N 4330—W 10330/7.5

THIS MAP COMPLIES WITH NATIONAL MAP ACCURACY STANDARDS
FOR SALE BY U. S. GEOLOGICAL SURVEY, DENVER, COLORADO 80225, OR WASHINGTON, D. C. 20242
A FOLDER DESCRIBING TOPOGRAPHIC MAPS AND SYMBOLS IS AVAILABLE ON REQUEST

1956
AMS 5271 II SE—SERIES V873

APR 24 1973

1685