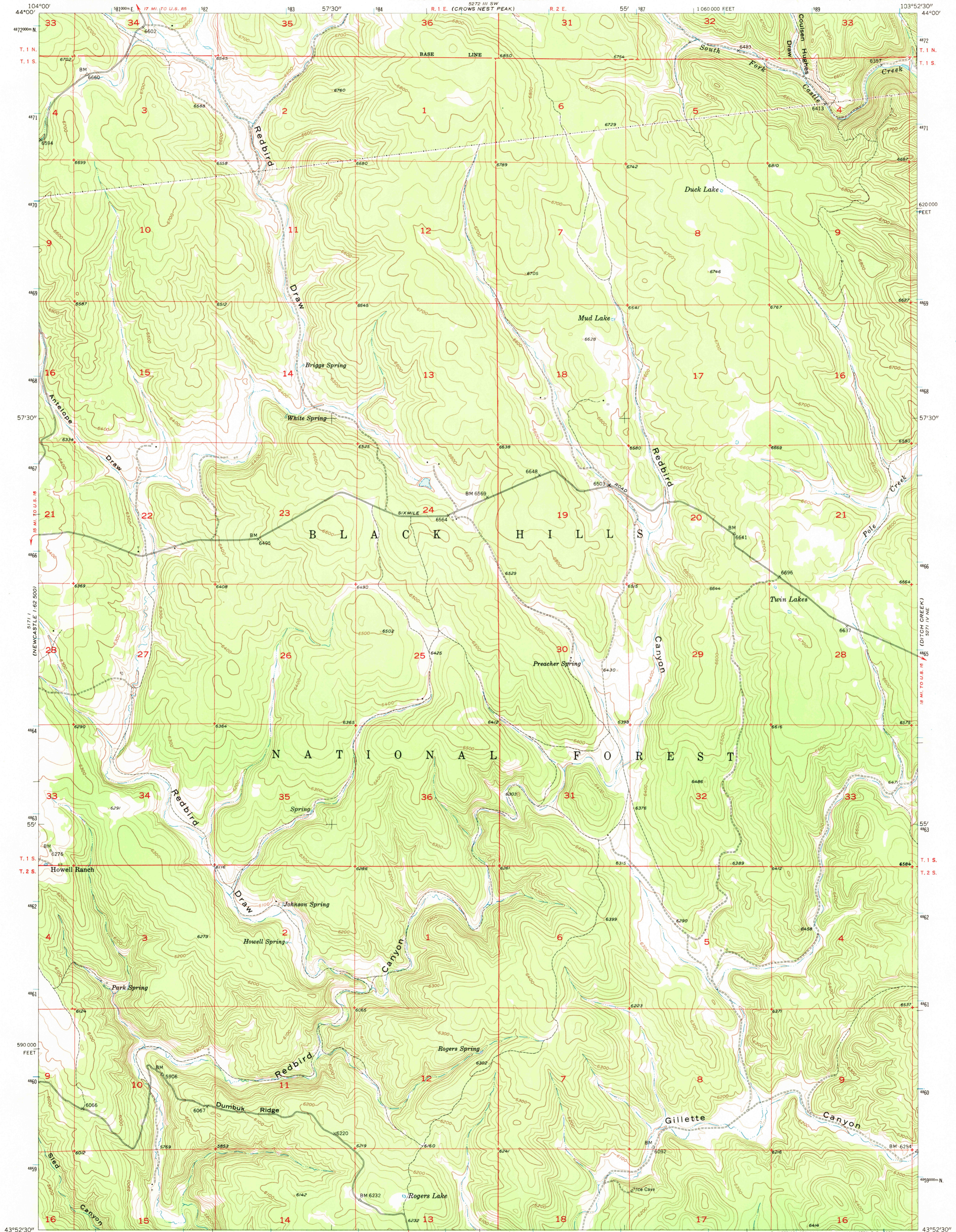
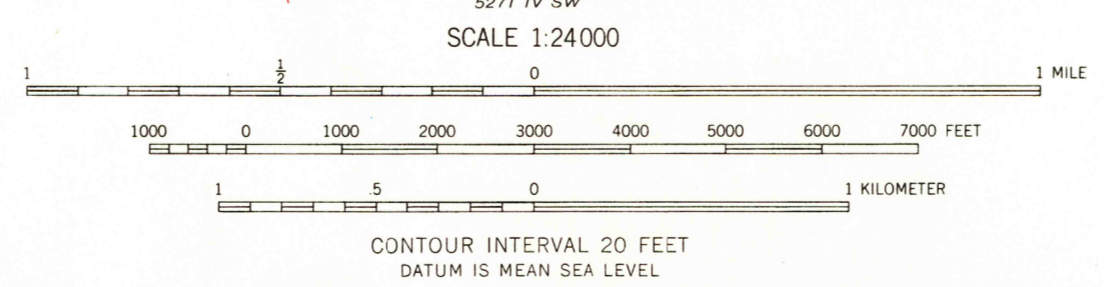
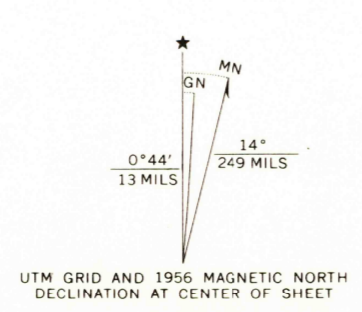


FOUR CORNERS  
5724 CORNERS  
1:125,000

5724 CORNERS  
FOUR CORNERS  
1:125,000

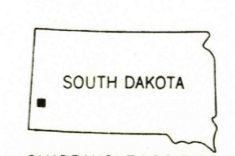


Mapped, edited, and published by the Geological Survey  
Control by USGS and USCGS  
Topography from aerial photographs by multiplex methods  
Aerial photographs taken 1954. Field check 1956  
Polyconic projection. 1927 North American datum  
10,000-foot grid based on South Dakota coordinate system,  
south zone  
1000-meter Universal Transverse Mercator grid ticks,  
zone 13, shown in blue



USGS  
HISTORICAL FILE  
TOPOGRAPHIC DIVISION

ROAD CLASSIFICATION  
Light-duty ————— Unimproved dirt =



THIS MAP COMPLIES WITH NATIONAL MAP ACCURACY STANDARDS  
FOR SALE BY U.S. GEOLOGICAL SURVEY, DENVER, COLORADO 80225, OR WASHINGTON, D.C. 20242  
A FOLDER DESCRIBING TOPOGRAPHIC MAPS AND SYMBOLS IS AVAILABLE ON REQUEST

U.S.G.S. PREACHER SPRING, S. DAK.  
N 4352.5—W 10352.5/7.5  
1956  
AMS 5271 IV NW—SERIES V873  
FILE COPY  
TOPOGRAPHIC DIVISION

SEP 4 1970

1805