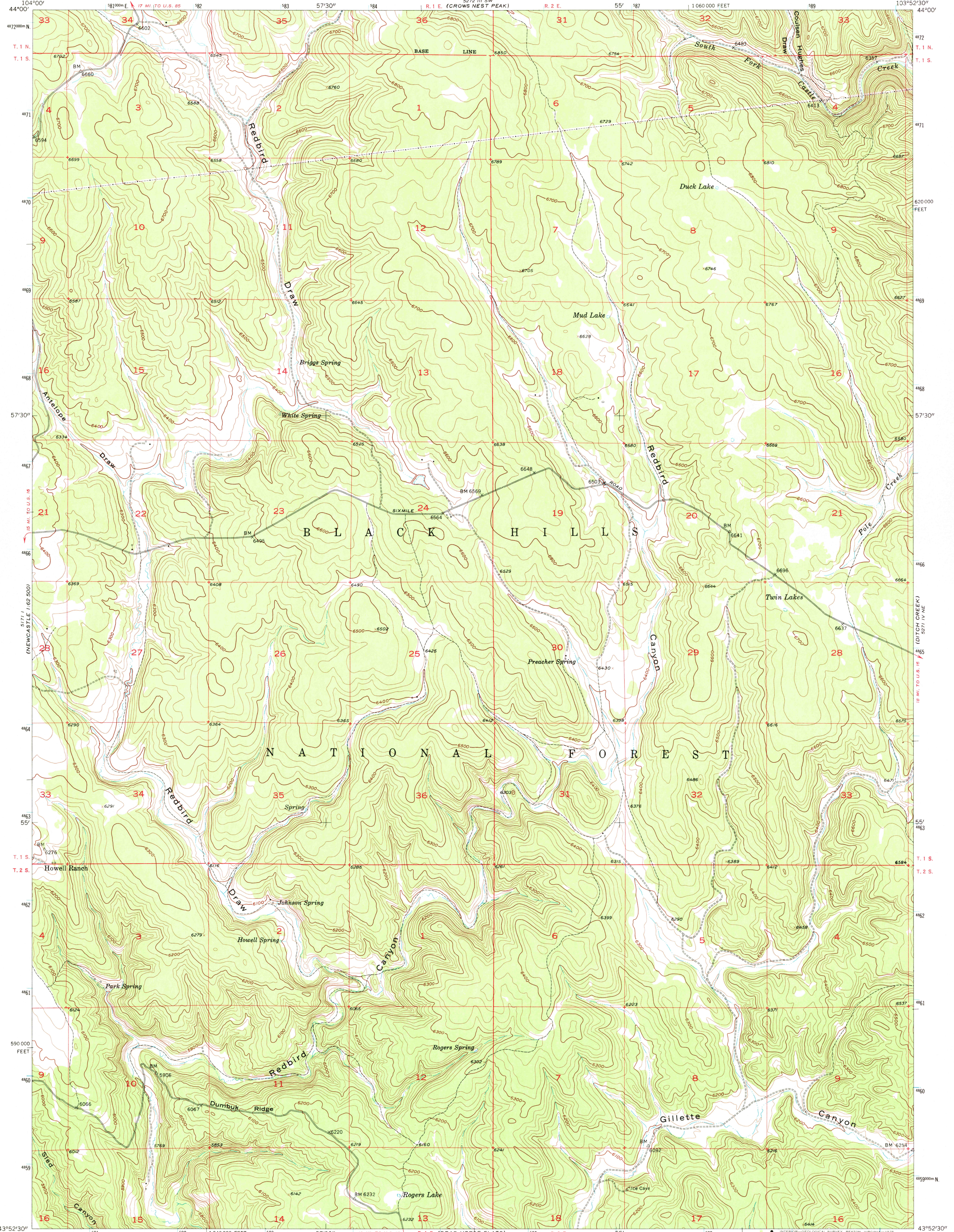


5721 I (FOUR CORNERS)
1:62,500

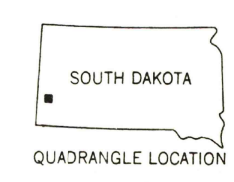
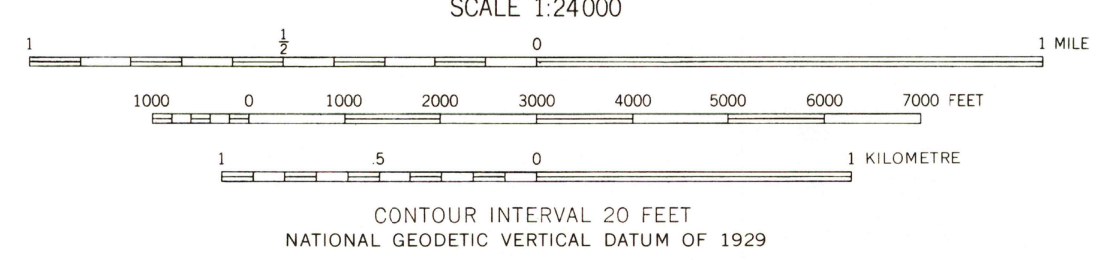
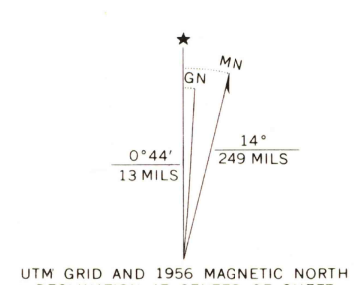
527 IV E (DEAF FIELD)



5721 I (ANY PEAK)
5721 I E

527 IV E (SIGNAL HILL)
527 IV E

Mapped, edited, and published by the Geological Survey
Control by USGS and USC&GS
Topography from aerial photographs by multiplex methods
Aerial photographs taken 1954. Field check 1956
Polyconic projection. 1927 North American datum
10,000-foot grid based on South Dakota coordinate system,
south zone
1000-metre Universal Transverse Mercator grid ticks,
zone 13, shown in blue



ROAD CLASSIFICATION
Light-duty ————— Unimproved dirt - - - - -

PREACHER SPRING, S. DAK.
N4352.5-W10352.5/7.5
1956
AMS 5271 IV NW—SERIES V873

THIS MAP COMPLIES WITH NATIONAL MAP ACCURACY STANDARDS
FOR SALE BY U. S. GEOLOGICAL SURVEY, DENVER, COLORADO 80225, OR RESTON, VIRGINIA 22092
A FOLDER DESCRIBING TOPOGRAPHIC MAPS AND SYMBOLS IS AVAILABLE ON REQUEST

USGS
HISTORICAL FILE
TOPOGRAPHIC DIVISION

AUG 1 1975

5345