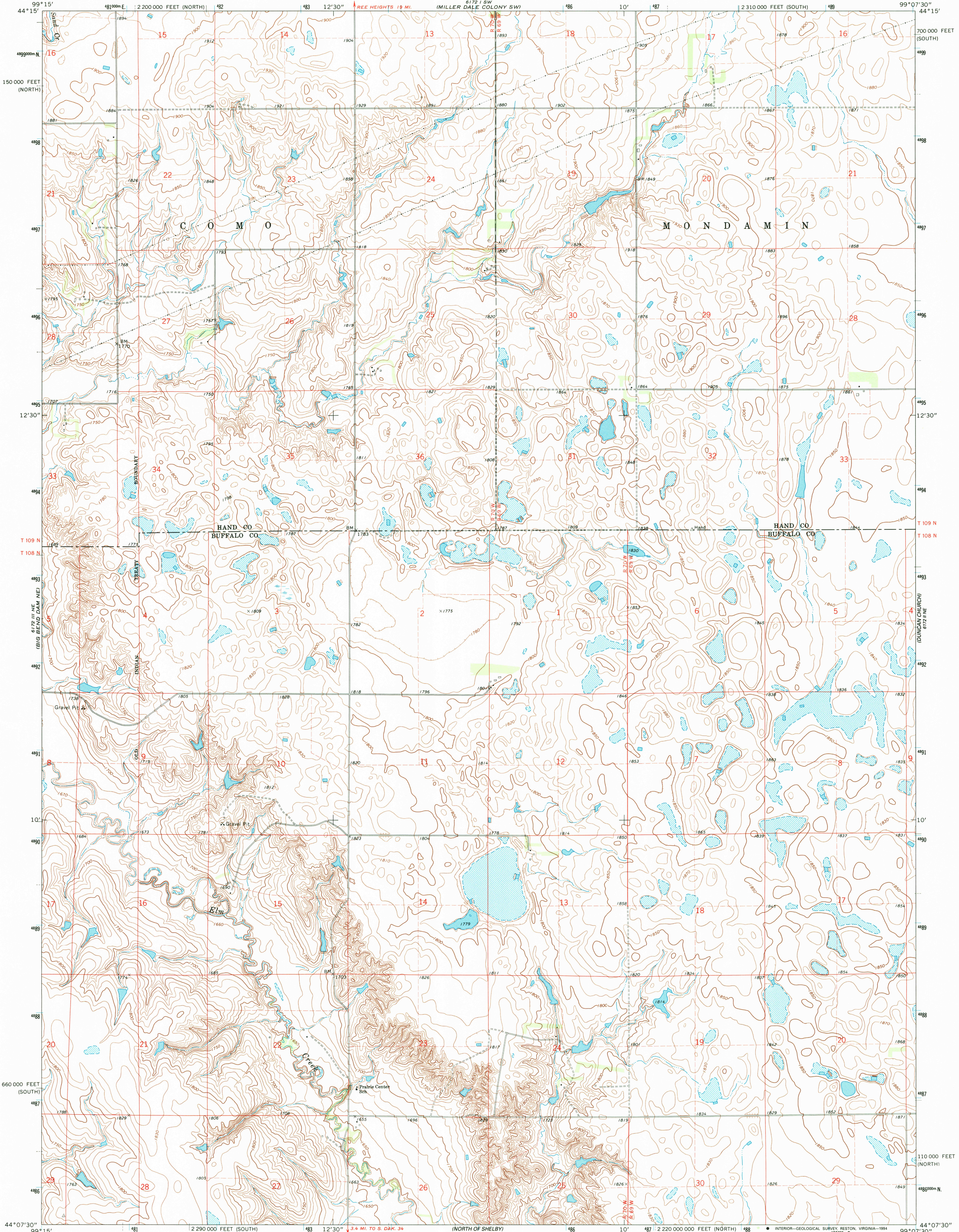


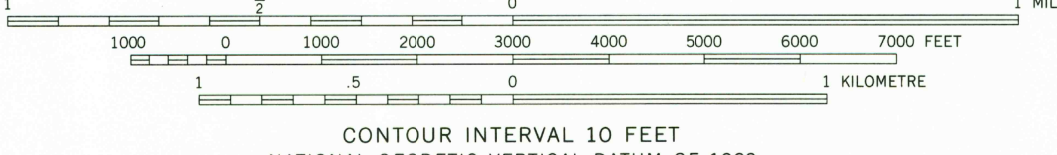
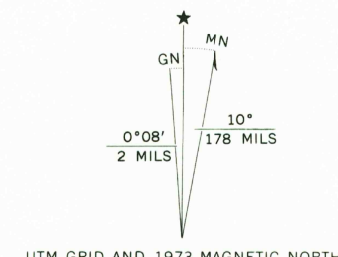
UNITED STATES
DEPARTMENT OF THE INTERIOR
GEOLOGICAL SURVEY

PRAIRIE CENTER SCHOOL QUADRANGLE
SOUTH DAKOTA
7.5 MINUTE SERIES (TOPOGRAPHIC)



Mapped, edited, and published by the Geological Survey

Control by USGS and NOS/NOAA
Topography by photogrammetric methods from aerial
photographs taken 1973. Field checked 1973
Projection: South Dakota coordinate system, south zone
(Lambert conformal conic)
10,000-foot grid ticks based on South Dakota coordinate
system, south and north zones
1000-metre Universal Transverse Mercator grid ticks,
zone 14, shown in blue. 1927 North American datum
Fine red dashed lines indicate selected fence and field lines where
generally visible on aerial photographs. This information is unchecked



ROAD CLASSIFICATION
Primary highway, ——— Light-duty road, hard or
hard surface ——— improved surface
Secondary highway, ——— Unimproved road ———
hard surface ———
○ Interstate Route □ U.S. Route ○ State Route

THIS MAP COMPLIES WITH NATIONAL MAP ACCURACY STANDARDS
FOR SALE BY U.S. GEOLOGICAL SURVEY, DENVER, COLORADO 80225, OR RESTON, VIRGINIA 22092
A FOLDER DESCRIBING TOPOGRAPHIC MAPS AND SYMBOLS IS AVAILABLE ON REQUEST

PRAIRIE CENTER SCHOOL, S. DAK.
(FORMERLY BIG BEND DAM 4 NW)
44099-B2-TF-024
1973

