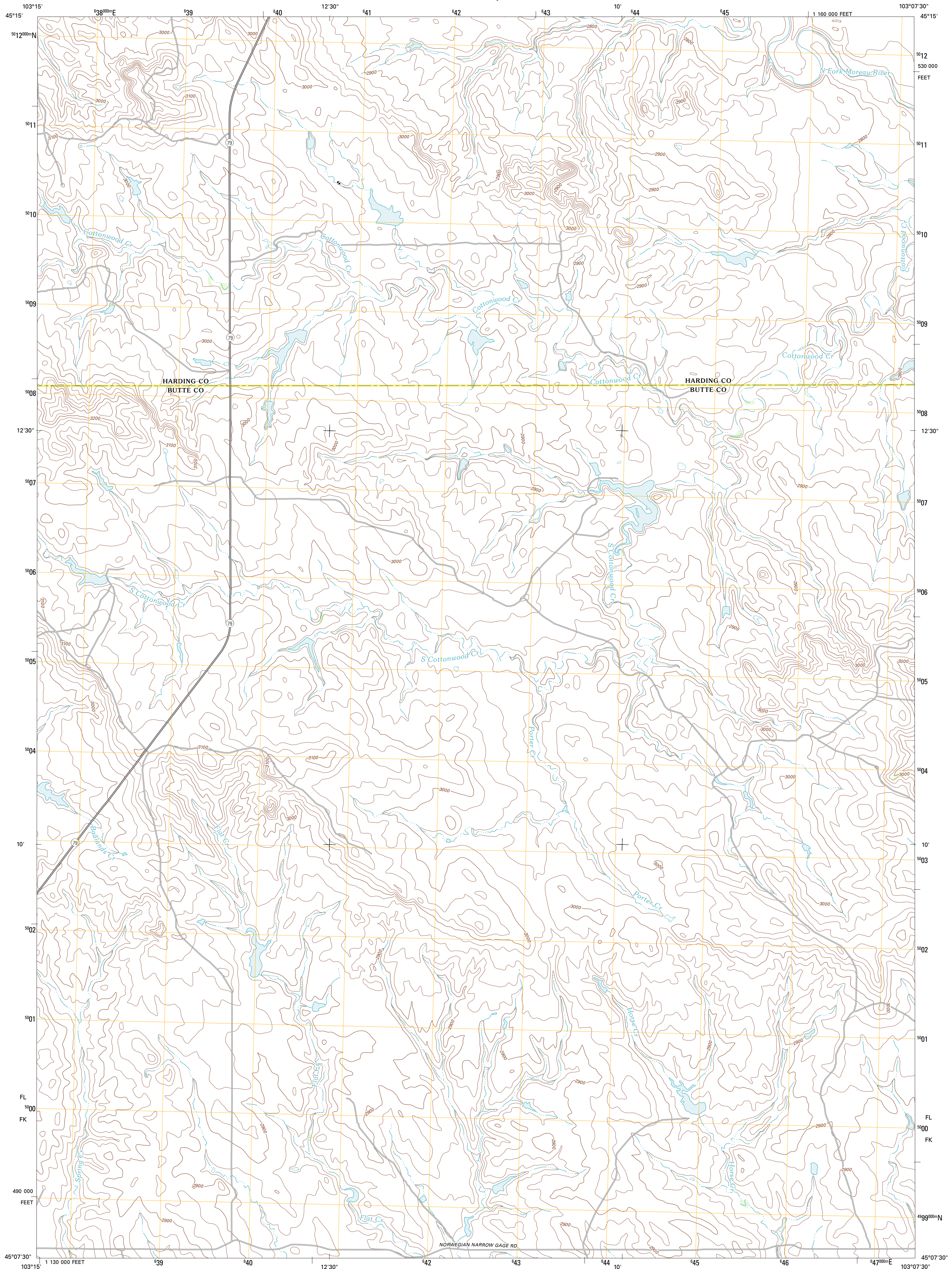




U.S. DEPARTMENT OF THE INTERIOR
U. S. GEOLOGICAL SURVEY



PORTER CREEK QUADRANGLE
SOUTH DAKOTA
7.5-MINUTE SERIES

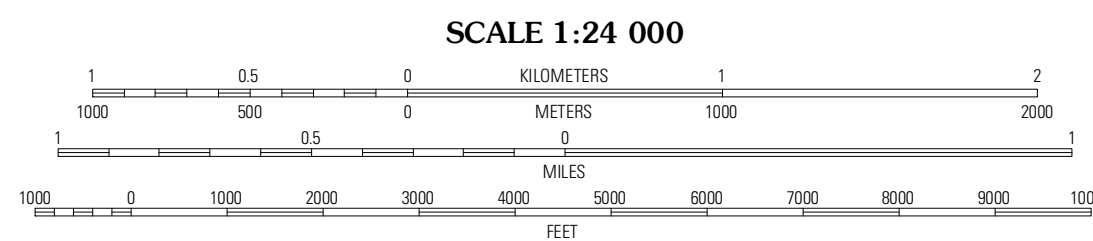


Produced by the United States Geological Survey
North American Datum of 1983 (NAD83)
World Geodetic System of 1984 (WGS84). Projection and
1 000-meter grid: Universal Transverse Mercator, Zone 18T
10 000-foot ticks: South Dakota Coordinate System of 1983
(north zone)

Imagery.....NAP, August 2010
Roads.....©2006-2011 TomTom
Names.....©2011
Hydrography.....National Hydrography Dataset, 2010
Contours.....National Elevation Dataset, 2012
Boundaries.....Census, IBWC, IBC, USGS, 1972 - 2010

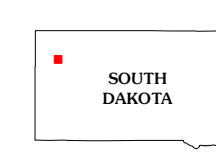
UTM GRID AND 2012 MAGNETIC NORTH
DECLINATION AT CENTER OF SHEET

U.S. National Grid
100,000m Square ID
FL
FK
Grid Zone Designation
18T



CONTOUR INTERVAL 20 FEET
NORTH AMERICAN VERTICAL DATUM OF 1988

This map was produced to conform with the
National Geospatial Program US Topo Product Standard, 2011.
A metadata file associated with this product is draft version 0.6.3



QUADRANGLE LOCATION

Bass Butte SE	Irish Butte	Sheep Mountain
Cranger Creek	Porter Creek	Fish Draw
Hoover	Deers Ears Butte North	Tomato Can Buttes

ROAD CLASSIFICATION

Interstate Route State Route
US Route Local Road
Ramp 4WD
 Interstate Route US Route State Route

PORTER CREEK, SD
2012

ADJOINING 7.5' QUADRANGLES