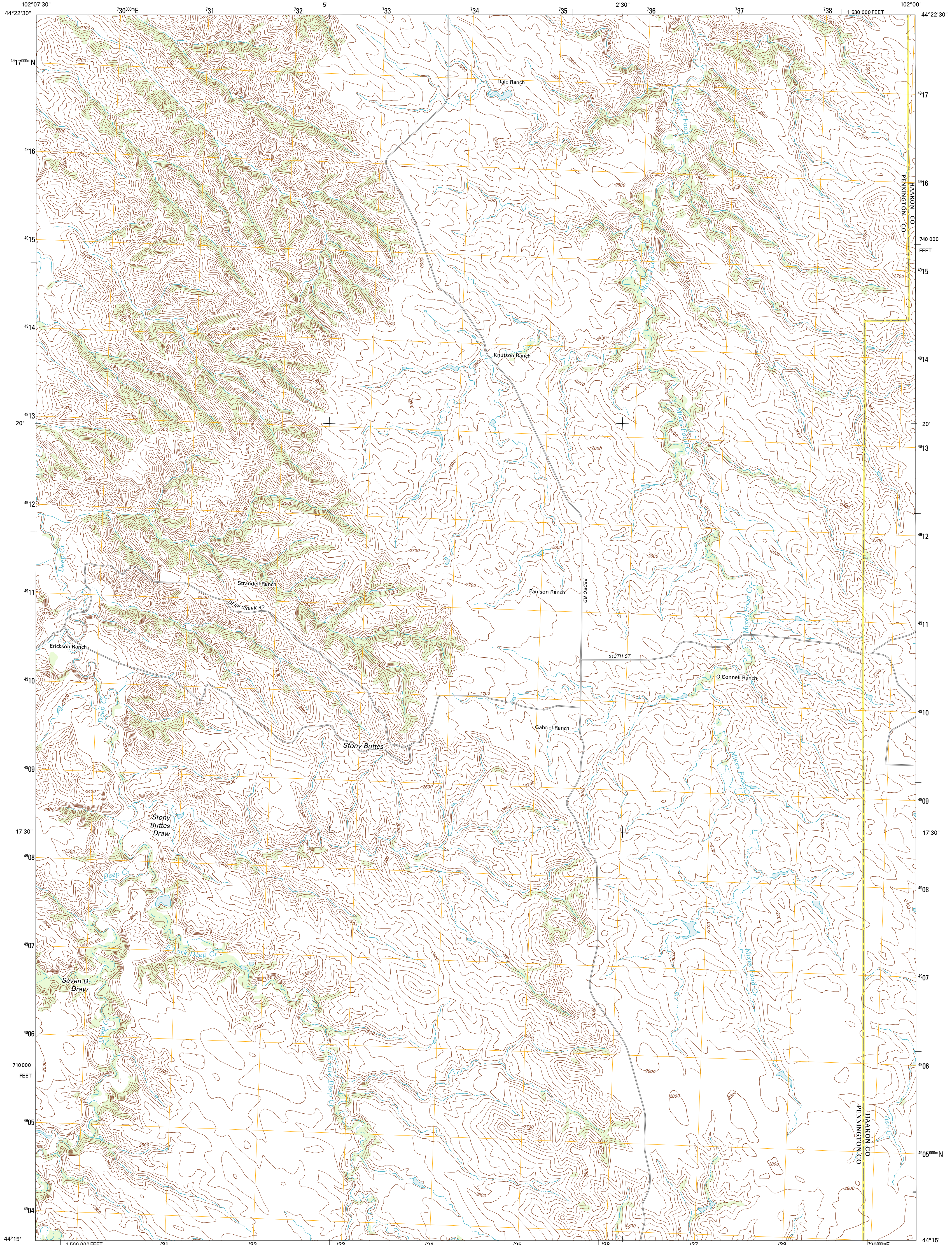




U.S. DEPARTMENT OF THE INTERIOR  
U. S. GEOLOGICAL SURVEY

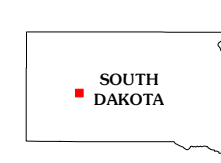
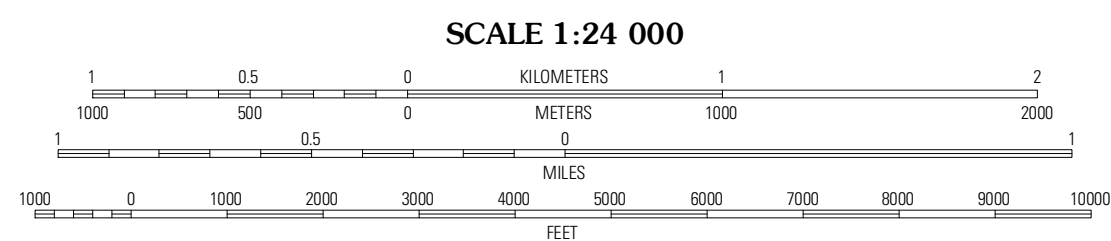
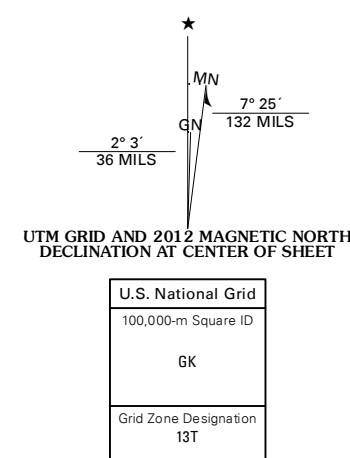


PEDRO SE QUADRANGLE  
SOUTH DAKOTA  
7.5-MINUTE SERIES



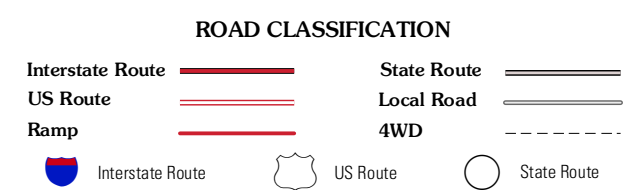
Produced by the United States Geological Survey  
North American Datum of 1983 (NAD83)  
World Geodetic System of 1984 (WGS84). Projection and  
1 000-meter grid: Universal Transverse Mercator, Zone 13T  
10 000-foot ticks: South Dakota Coordinate System of 1983  
(south zone)

Imagery.....NAIP, July 2010  
Roads.....©2006-2011 TomTom  
Names.....National Geospatial Program US Topo Product Standard, 2011  
Hydrography.....National Hydrography Dataset, 2010  
Contours.....National Elevation Dataset, 2012  
Boundaries.....Census, IBWC, IBC, USGS, 1972 - 2010



ADJOINING 7.5' QUADRANGLES

|             |             |            |
|-------------|-------------|------------|
| Pedro NW    | Pedro       | Hilland NW |
| Creighton   | Pedro SE    | Post Ranch |
| Rainy Creek | Horse Tooth | Grindstone |



CONTOUR INTERVAL 20 FEET  
NORTH AMERICAN VERTICAL DATUM OF 1988

This map was produced to conform with the  
National Geospatial Program US Topo Product Standard, 2011.  
A metadata file associated with this product is draft version 0.6.3

PEDRO SE, SD  
2012