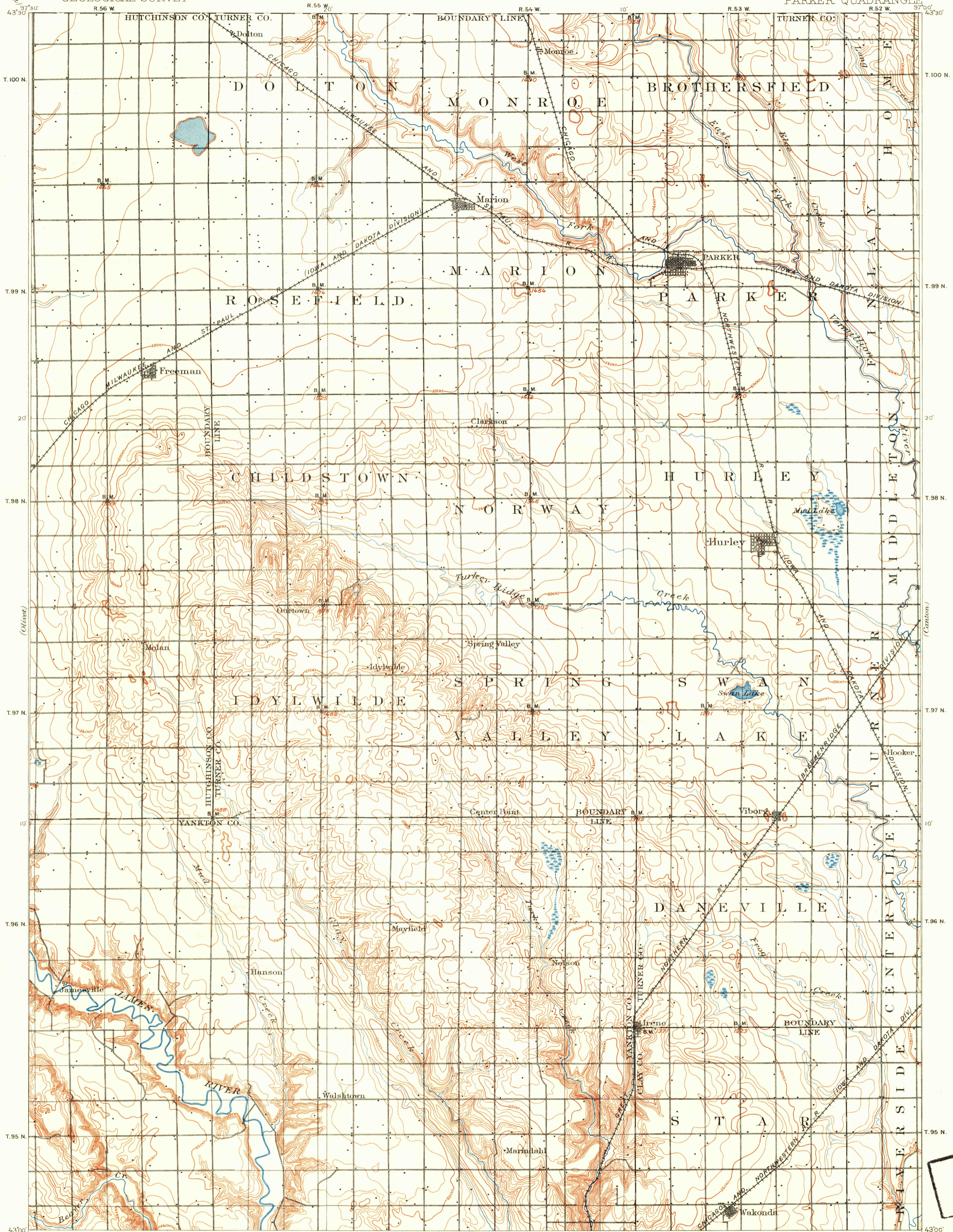


U.S.G.S.  
FILE COPY  
Inspection and Editing.

UNITED STATES  
DEPARTMENT OF THE INTERIOR  
GEOLOGICAL SURVEY

SOUTH DAKOTA  
PARKER QUADRANGLE



Jno. H. Renshaw, Topographer in charge.  
Control by Geo. T. Hawkins.  
Topography by Wm. H. Griffin.  
Surveyed in 1896.

TRUE NORTH  
APPROXIMATE MEAN  
MAGNETIC NORTH  
DECLINATION, 1900

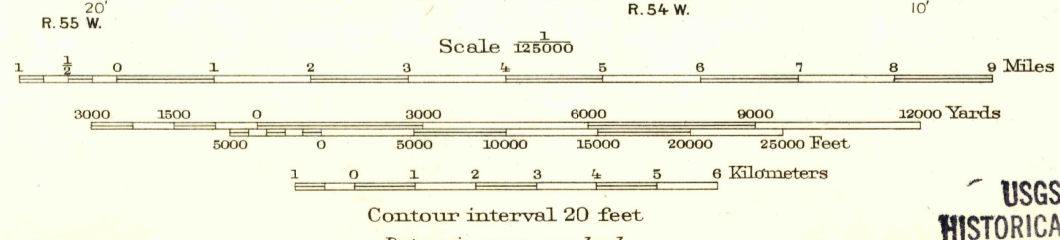


DIAGRAM OF TOWNSHIP

6	5	4	3	2	1
7	8	9	10	11	12
18	17	16	15	14	13
19	20	21	22	23	24
30	29	28	27	26	25
31	32	33	34	35	36

Edition of 1898, reprinted 1949  
Polyconic projection

S. D.  
PARKER  
N4300-W9700/30

USGS  
HISTORICAL FILE  
TOPOGRAPHIC DIVISION

U.S.G.S.  
FILE COPY  
Inspection and Editing.