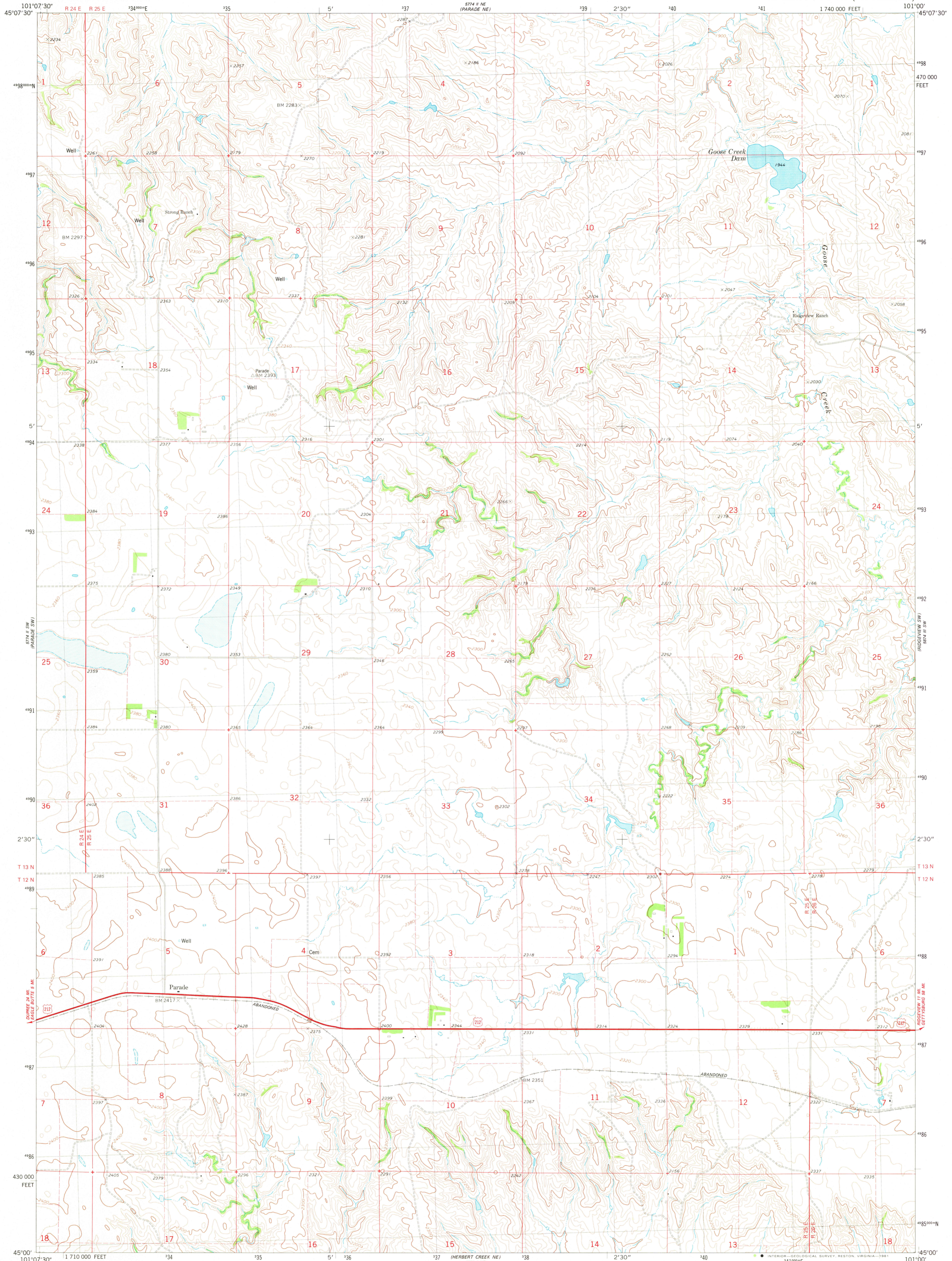
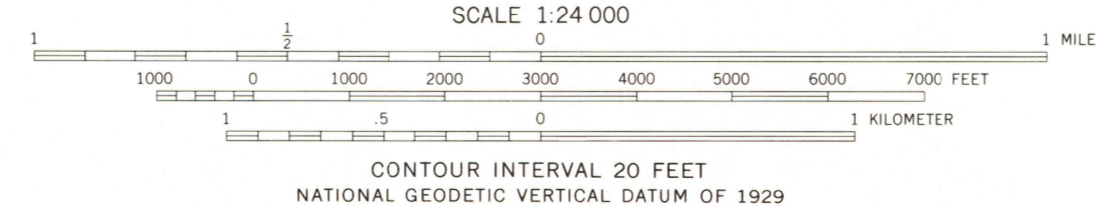


5774 II NW
(PARADE NW)

5774 II NW
(RODGEVIEW NW)

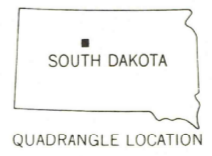


Mapped, edited, and published by the Geological Survey
Control by USGS and NOS/NOAA
Topography by photogrammetric methods from aerial photographs
taken 1974. Field checked 1976. Map edited 1981
Projection and 10,000-foot grid ticks: South Dakota coordinate
system, north zone (Lambert conformal conic)
1000-meter Universal Transverse Mercator grid, zone 14
1927 North American Datum
To place on the predicted North American Datum 1983
move the projection lines 6 meters north and
36 meters east as shown by dashed corner ticks
There may be private inholdings within the boundaries of
the National or State Reservations shown on this map
Entire area lies within the Cheyenne River Indian Reservation
Fine red dashed lines indicate selected fence and field lines where
generally visible on aerial photographs. This information is unchecked



ROAD CLASSIFICATION

Primary highway, hard surface	Light-duty road, hard or improved surface
Secondary highway, hard surface	Unimproved road
Interstate Route	U.S. Route
	State Route



PARADE, S. DAK.
N4500-W10100/7.5
1981
DMA 5774 II SE—SERIES V873

RETURN TO:
USGS AND HISTORICAL MAP ARCHIVES

OCT 26 1981

1900