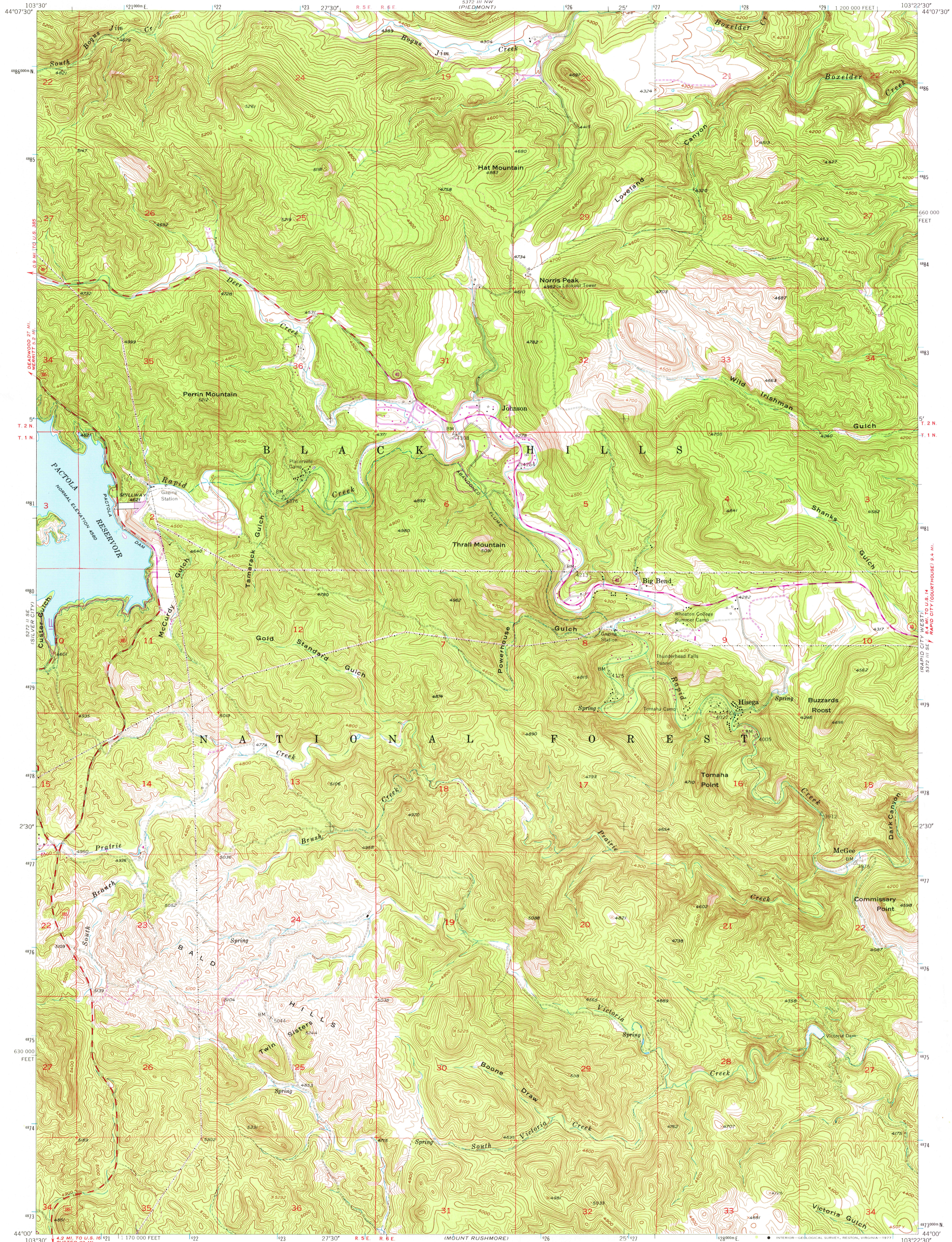
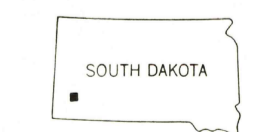
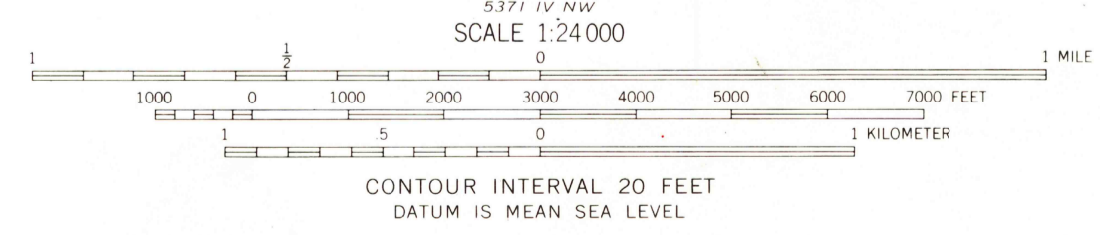
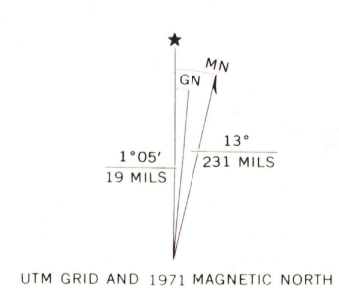


32° 15' N (NEAD)

372° 15' NE (BLACKHAWK)



Mapped, edited, and published by the Geological Survey  
Control by USGS and USC&GS  
Topography from aerial photographs by multiplex methods  
Aerial photographs taken 1952. Field check 1953-1954  
Polyconic projection. 1927 North American datum  
10,000-foot grid based on South Dakota coordinate system, south zone  
Broken light blue lines indicate areas subject to controlled inundation  
Unchecked elevations are shown in brown  
1000-meter Transverse Mercator grid ticks, zone 13, shown in blue  
Revisions shown in purple compiled from aerial photographs taken 1971. This information not field checked



ROAD CLASSIFICATION

Medium-duty	Light-duty
Unimproved dirt	
U. S. Route	State Route

THIS MAP COMPLIES WITH NATIONAL MAP ACCURACY STANDARDS  
FOR SALE BY U. S. GEOLOGICAL SURVEY, DENVER, COLORADO 80225, OR RESTON, VIRGINIA 22092  
A FOLDER DESCRIBING TOPOGRAPHIC MAPS AND SYMBOLS IS AVAILABLE ON REQUEST

USGS  
Historical File  
Topographic Division  
PACTOLA DAM, S. DAK.  
N4400-W10322.5/7.5  
1954  
PHOTOREVISED 1971  
AMS 5372 III SW - SERIES V873

MAY 0 2 1977

3795

RETURN TO:  
USGS HISTORICAL MAP ARCHIVES

(ROCKERSVILLE)  
357° 15' NE