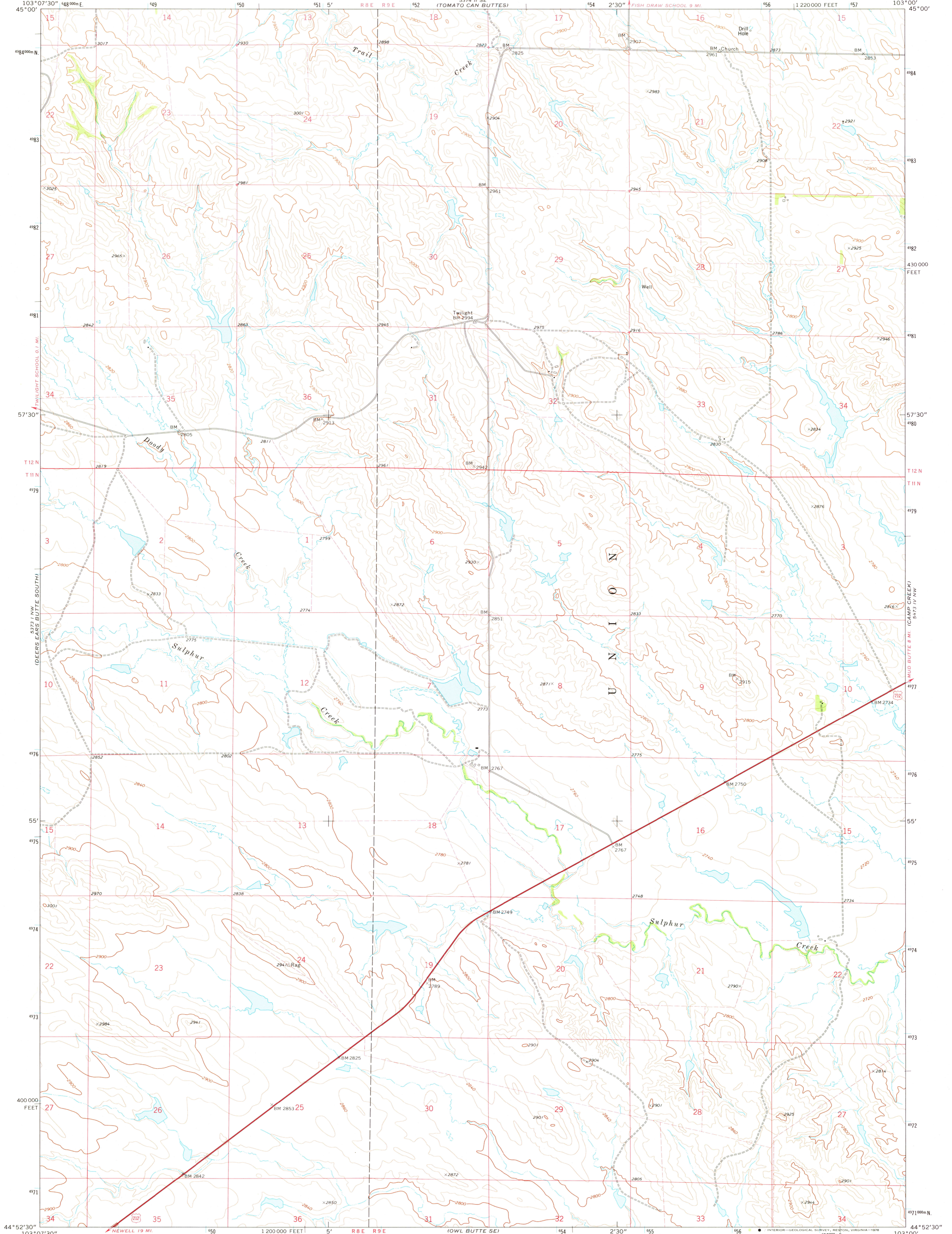


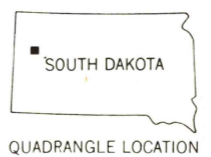
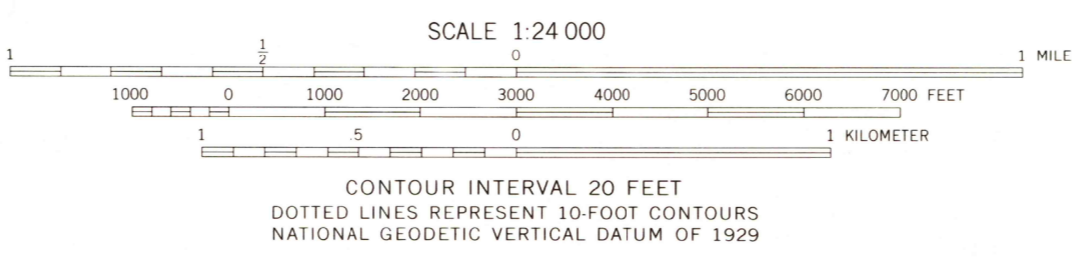
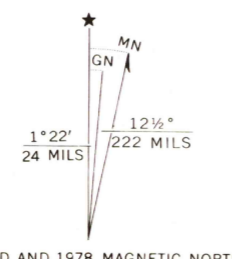
5373 11 SW
OWL BUTTE NE
BUTTE NORTH

UNITED STATES
DEPARTMENT OF THE INTERIOR
GEOLOGICAL SURVEY

OWL BUTTE NE QUADRANGLE
SOUTH DAKOTA—BUTTE CO.
7.5 MINUTE SERIES (TOPOGRAPHIC)



Mapped, edited, and published by the Geological Survey
Control by USGS and NOS/NOAA
Topography by photogrammetric methods from aerial photographs
taken 1972. Field checked 1973. Map edited 1978
Projection and 10,000-foot grid ticks: South Dakota
coordinate system, north zone (Lambert conformal conic)
1000-meter Universal Transverse Mercator grid ticks,
zone 13, shown in blue. 1927 North American datum
Fine red dashed lines indicate selected fence lines



ROAD CLASSIFICATION

Primary highway, hard surface	Light duty road, hard or improved surface
Secondary highway, hard surface	Unimproved road
Interstate Route	U. S. Route
	State Route

JUL 20 1978
3000

USGS Historical File Topographic Division
OWL BUTTE NE, S. DAK.
N4452.5-W10300/7.5
1978
AMS 5373 1 NE—SERIES V873

THIS MAP COMPLIES WITH NATIONAL MAP ACCURACY STANDARDS
FOR SALE BY U. S. GEOLOGICAL SURVEY, DENVER, COLORADO 80225, OR RESTON, VIRGINIA 22092
A FOLDER DESCRIBING TOPOGRAPHIC MAPS AND SYMBOLS IS AVAILABLE ON REQUEST

(TABLE TOP BUTTE)
5373 11 SW