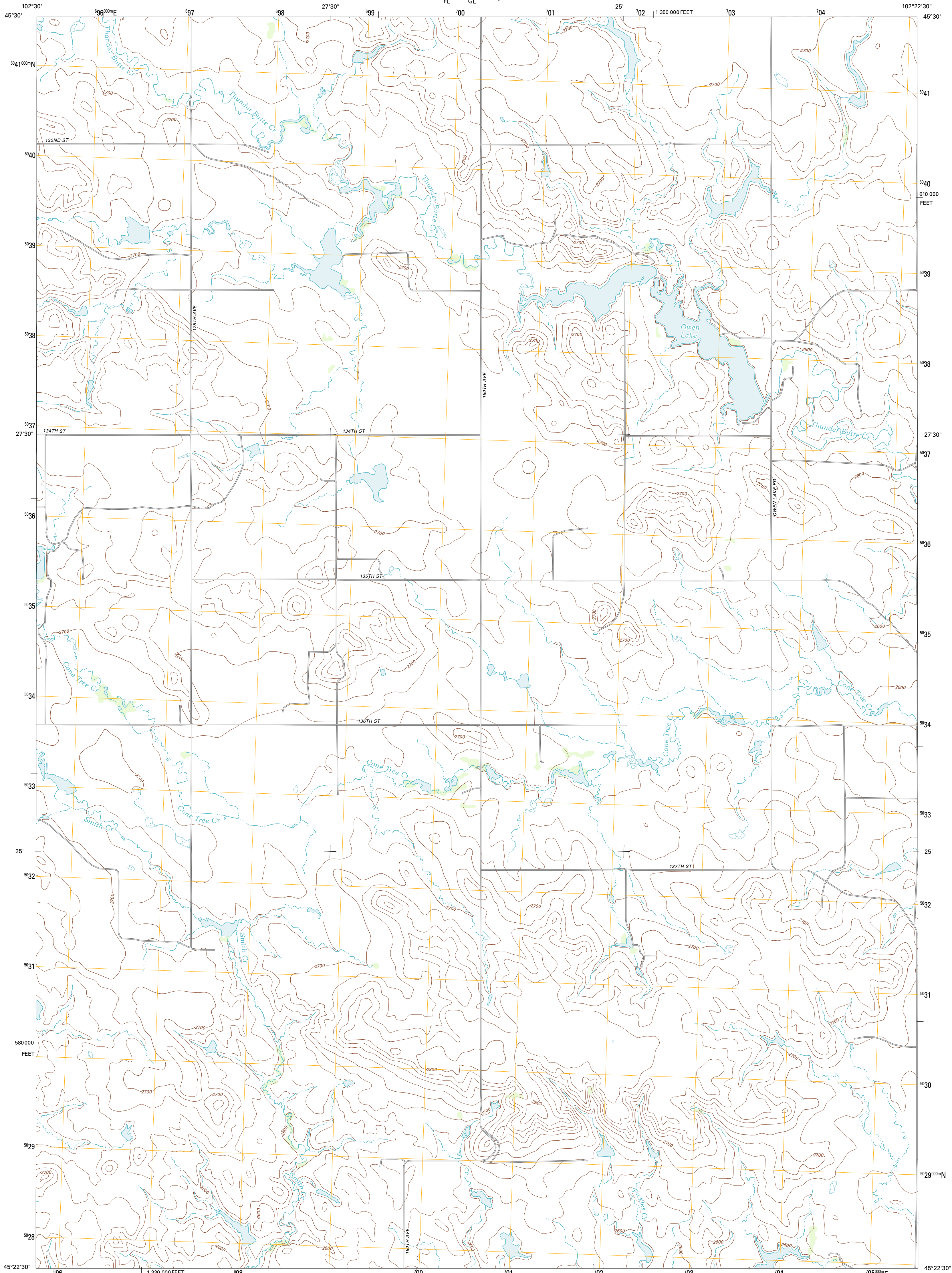




U.S. DEPARTMENT OF THE INTERIOR  
U. S. GEOLOGICAL SURVEY

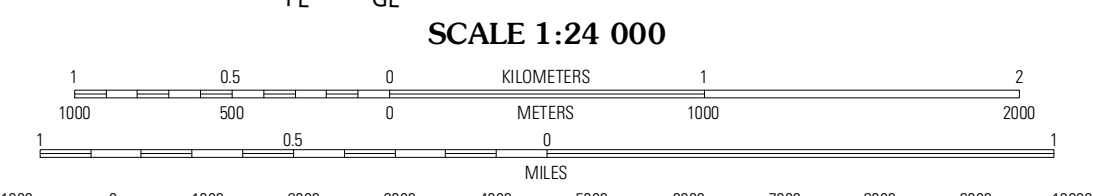
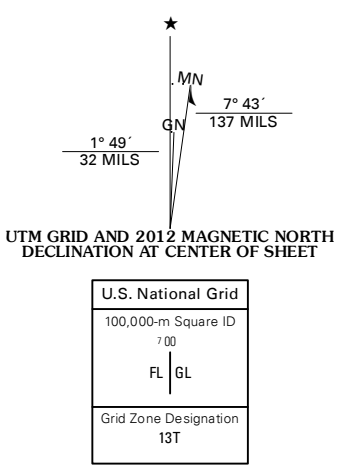


OWEN LAKE QUADRANGLE  
SOUTH DAKOTA-PERKINS CO.  
7.5-MINUTE SERIES

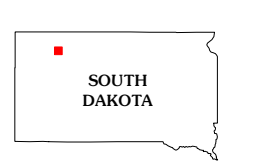


Produced by the United States Geological Survey  
North American Datum of 1983 (NAD83)  
World Geodetic System of 1984 (WGS84). Projection and  
1 000-meter grid: Universal Transverse Mercator, Zone 13T  
10 000-foot ticks: South Dakota Coordinate System of 1983  
(north zone)

Imagery.....NAIP, August 2010  
Roads.....©2006-2011 TomTom  
Names.....©2006-2011 TomTom  
Hydrography.....National Hydrography Dataset, 2010  
Contours.....National Elevation Dataset, 2012  
Boundaries.....Census, IBWC, IBC, USGS, 1972 - 2010



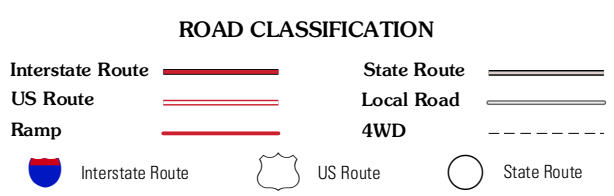
CONTOUR INTERVAL 20 FEET  
NORTH AMERICAN VERTICAL DATUM OF 1988  
This map was produced to conform with the  
National Geospatial Program US Topo Product Standard, 2011.  
A metadata file associated with this product is draft version 0.6.3



QUADRANGLE LOCATION

Square Top Butte	Bison	Baccar Buttes
Dark NE	Owen Lake	Chance
Rabbit Butte	Two Buttes	Sunrise Butte

ADJOINING 7.5' QUADRANGLES



OWEN LAKE, SD  
2012