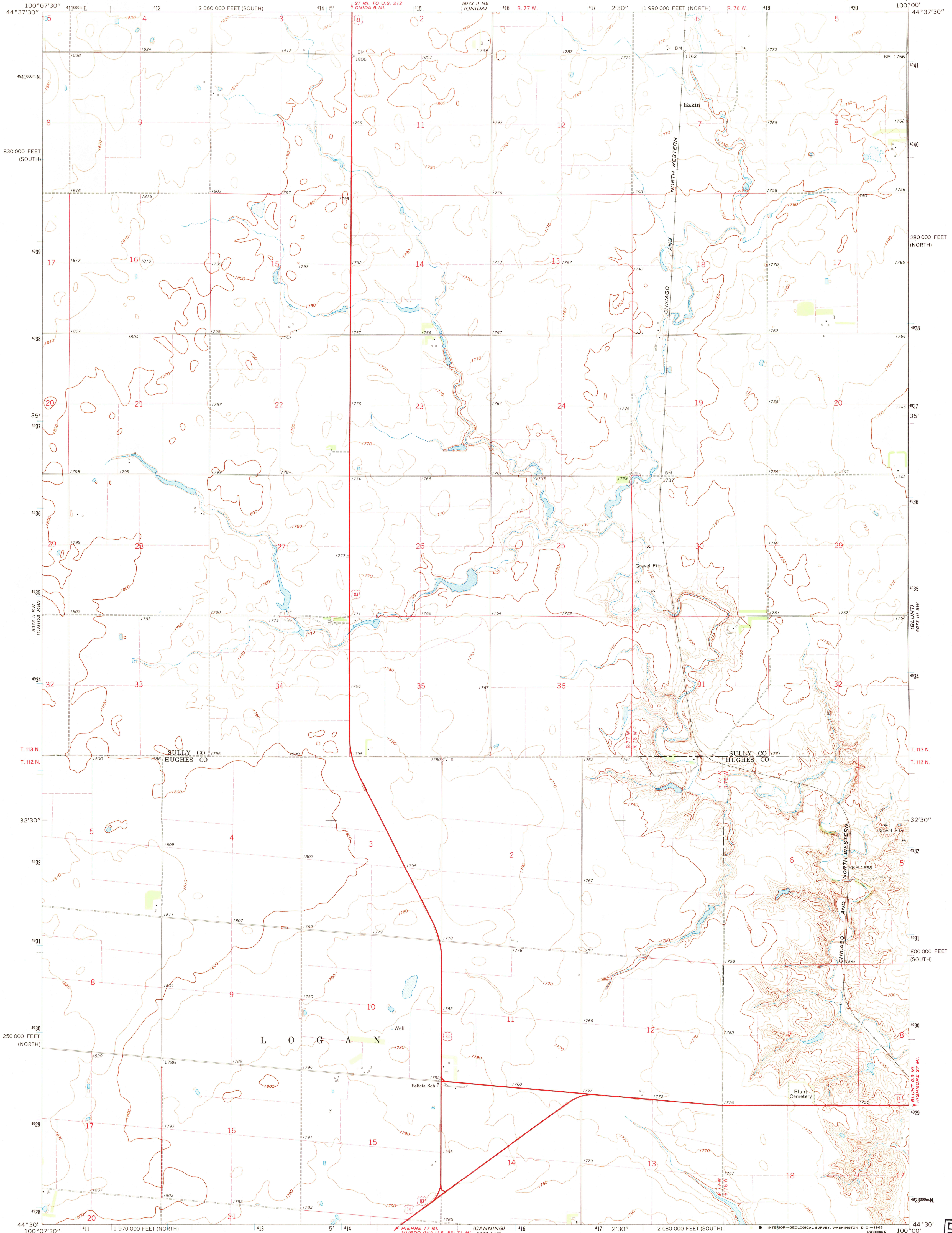
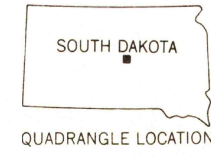
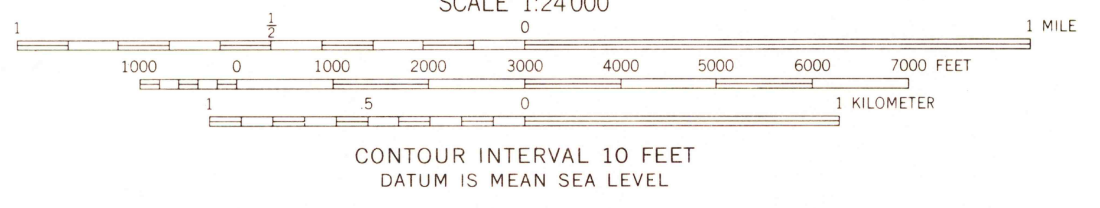
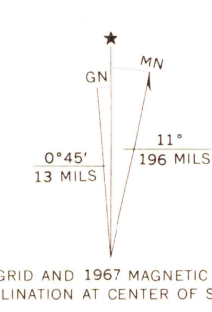


UNITED STATES  
DEPARTMENT OF THE INTERIOR  
GEOLOGICAL SURVEY

ONIDA SE QUADRANGLE  
SOUTH DAKOTA  
7.5 MINUTE SERIES (TOPOGRAPHIC)



Mapped, edited, and published by the Geological Survey as part of the Department of the Interior program for the development of the Missouri River Basin. Control by USGS and USC&GS. Topography by photogrammetric methods from aerial photographs taken 1966. Field checked 1967. Polyconic projection. 1927 North American datum 10,000-foot grids based on South Dakota coordinate system, north and south zones 1000-meter Universal Transverse Mercator grid ticks zone 14, shown in blue. Fine red dashed lines indicate selected fence and field lines where generally visible on aerial photographs. This information is unchecked.



USGS  
HISTORICAL FILE  
TOPOGRAPHIC DIVISION

ONIDA SE, S. DAK.  
N4430 - W10000/7.5

U.S.G.S.  
FILE COPY  
TOPOGRAPHIC DIVISION

1935  
MAY 13 1969

THIS MAP COMPLIES WITH NATIONAL MAP ACCURACY STANDARDS  
FOR SALE BY U.S. GEOLOGICAL SURVEY, DENVER, COLORADO 80225, OR WASHINGTON, D. C. 20242  
A FOLDER DESCRIBING TOPOGRAPHIC MAPS AND SYMBOLS IS AVAILABLE ON REQUEST

1967  
AMS 5973 II SE--SERIES V873